



North American Traditional Deeded Week Owners  
Membership Guide 2025-2026









## Destination Xchange: Unlimited Travel Possibilities Await

Destination Xchange provides convenience, flexibility and a variety of travel options and experiences to help maximize your enjoyment of vacation ownership. From seaside journeys to mountain retreats to city and country getaways, Destination Xchange's flexible Tier-based system allows you to exchange your ownership week for stays at over 4,800\* resorts across more than 122 countries, with all the comforts of home.

This guide is not intended to explain every component of membership in detail. The Disclosure Guide, Reservations Rules and full Terms and Conditions of the program are available for review at any time on [hiltongrandvacations.com](http://hiltongrandvacations.com). Please consult these documents for further information and explanation of requirements for membership and exchange.

\*Certain vacation properties are arranged through an affiliation between DEX and RCI.

### Key Features

- **Variety:** Over 4,800\* resorts worldwide available for exchange.
- **Flexibility:** A week deposited into Destination Xchange is valid for an exchange reservation for five years from the arrival date of the week deposited.
- **Convenience:** Easy upgrade process for alternative seasons and larger accommodations.
- **Easy-To-Use System:** Search live exchange availability prior to depositing your week.
- **Exclusiveness:** Members-only discount, called DEXTRAS, on rental getaways at most Hilton Grand Vacations resorts.

# Table of Contents

<b>Guide to Destination Xchange</b>	<b>7</b>
What happens to my ownership week?	7
What is the Destination Xchange Tier System?	7
What is the Tier value of my ownership week?	7
Can I exchange into different Destination Xchange Tiers?	7
Enjoy even more vacation options with Destination Xtras	7
Upgrade Fee Chart	8
Membership Enrollment	8
Designated Member	8
Individual Membership Renewal	8
Individual Membership Cancellation	8
Depositing Your Week	8
Late Deposits	8
Booking Your Destination Xchange Vacation	9
Reservation Cancellation	9
Destination Xchange Protection Plan	9
Procedures for Checking-In and Reservation Rules	9
Guest Certificates	9
Reservations Made for Commercial Gain	9
Helpful Tips	9
Online Member Accounts and Feedback	10
<b>Contact Information</b>	<b>11</b>
<b>Fees-at-a-Glance</b>	<b>12</b>
<b>Over 4,800 Resorts Available Around The World</b>	<b>14</b>
<b>Destination Xchange® Locations</b>	<b>16</b>
<b>Canada</b>	<b>18</b>
Alberta	18
British Columbia	18
Ontario	19
Quebec	19
<b>United States</b>	<b>20</b>
Arizona	20
California	23
Florida	26



Hawaii .....	29	<b>Africa .....</b>	<b>52</b>
Indiana .....	32	South Africa .....	52
Maryland .....	33	<b>Asia .....</b>	<b>53</b>
Missouri .....	33	Indonesia .....	53
Nevada .....	33	Thailand .....	53
New Mexico .....	34	<b>Australia .....</b>	<b>54</b>
North Carolina .....	34	Australia .....	54
South Carolina .....	35	New Zealand .....	54
Tennessee .....	36	<b>Featured Resorts .....</b>	<b>55</b>
Utah .....	37	Grand Pacific Resort at Carlsbad Inn	
Virginia .....	38	Carlsbad, CA	
Washington .....	39	Jaco Beach Premium Towers	
Wisconsin .....	40	Jaco, CR	
<b>Mexico .....</b>	<b>41</b>	Grand Pacific at Coronado	
Acapulco .....	41	Coronado, CA	
Cozumel .....	41	Fort Lauderdale Beach Resort SND	
Nuevo Vallarta .....	41	Fort Lauderdale, FL	
Puerto Vallarta .....	41	The Pines at Sunriver	
Quintana Roo .....	42	Sunriver, OR	
San Jose del Cabo .....	42	VI at Homestead	
Zihuatanejo .....	43	Lynden, WA	
<b>Caribbean, Central and South America .....</b>	<b>44</b>	The Grand Mayan Nuevo Vallarta	
Aruba .....	44	Nuevo Vallarta, MX	
Dominican Republic .....	44	The Grand Mayan Riviera Maya	
Sint Maarten .....	44	Playa del Carmen, MX	
<b>Europe .....</b>	<b>46</b>	Anantara Vacation Club Phuket Mai Khao	
England .....	46	Phuket, Thailand	
Scotland .....	47	Ocean Club Resort FHG	
Austria .....	47	North Myrtle Beach, SC	
Bulgaria .....	48	<b>2025 Weeks Calendar .....</b>	<b>56</b>
Italy .....	48	<b>2026 Weeks Calendar .....</b>	<b>57</b>
France .....	48		
Portugal .....	49		
Spain .....	49		

All features, furnishings and amenities depicted throughout are subject to change. This program as well as all benefits, fees and property locations are subject to cancellation and/or modification without notice.







# Guide to Destination Xchange

Welcome! As a Member of Destination Xchange, you have the ability to exchange your ownership week(s) to thousands of resorts worldwide, with maximum flexibility to exchange into different accommodation sizes and seasons. You can also exchange back to your home resort into different seasons and/or accommodation sizes, regardless of the season or accommodation size of your ownership week(s). Exchanges are based on the Destination Xchange Tier System that enables you to upgrade to different levels to accommodate your vacation needs.

## What happens to my ownership week?

Once you've enrolled as a Member of Destination Xchange, you can deposit your ownership week(s) for a future exchange vacation. Your deposited week is valid for five (5) years from the arrival date of the week deposited. You must book your exchange vacation and complete your travel during this five-year window. This feature provides great flexibility to save weeks for exchanging in future usage years, prevents losing your week(s) during usage years when you may not be able to travel or save and bundle deposits for future multi-week vacations.

In return, for a Base Exchange Fee you can book an available week at any of the resorts within the Destination Xchange portfolio. (Subject to availability. Upgrade Fees apply for Tier upgrade exchanges.)

## What is the Destination Xchange Tier System?

The Destination Xchange Tier System is a tool enabling you to easily compare the Tier value of your deposited ownership week(s) to the exchange Tier value of resorts you're interested in exchanging into. Each resort available within Destination Xchange has Tiers assigned to the various accommodation choices by season. Tier values are determined by a number of factors, including resort location, accommodation size, season and demand for the location. You can visit [hiltongrandvacations.com](http://hiltongrandvacations.com) or contact Owner Services to identify the Tier value of your desired exchange, as well as costs for upgrades into larger accommodation sizes or higher seasons.

## What is the Tier value of my ownership week?


The Tier value of your ownership week is determined by a number of factors, including resort location, accommodation size, season and demand for the resort location. To identify the Tier value of your ownership week, please refer to the Resort Directory section of this guide to find the resort where you own and review the Tier grid. You

can also visit [hiltongrandvacations.com](http://hiltongrandvacations.com) or contact Owner Services for more information on the Tier value of your ownership week(s). Tier values are subject to change from year to year.

## Can I exchange into different Destination Xchange Tiers?

One of the great features of Destination Xchange is that you're not restricted to solely booking exchange vacations in the same Tier as your ownership week. If you choose, you can book higher Tier exchange vacations by paying an Upgrade Fee. The Upgrade Fee Chart on page 8 shows the Upgrade Fee charged (in addition to the Base Exchange Fee), should you wish to exchange into a higher Tier than the Tier value of your deposited week.

## Enjoy even more vacation options with Destination Xtras

In addition to exchange options, Destination Xchange Members can also enjoy discounts on rental getaways to many Hilton Grand Vacations managed properties, which are identified in the Destination Xchange Resort Directory section of this guide with the  icon.

With Destination Xtras, Members can add additional nights to their exchange reservations or enjoy the special Member discount for additional vacations. Destination Xtras reservations can be booked up to 12 months prior to the Member's desired travel date, and no prepayment is required.

Members can book Destination Xtras reservations online by logging on to [hiltongrandvacations.com](http://hiltongrandvacations.com) or by contacting Owner Services (refer to page 11 for Owner Services contact information).

**TERMS & CONDITIONS FOR DESTINATION XTRAS:** Reservations are subject to availability. Destination Xchange membership must be active through the check-out date of preferred travel date. A valid debit or credit card is required at the time of booking to guarantee the reservation. Payment is taken upon arrival at the resort. Destination Xchange Member must be present for reservation; Guest Certificates cannot be purchased for Destination Xtras reservations. Additional terms and conditions may apply.



## Upgrade Fee Chart

Upgrading your vacation through Destination Xchange is simple. For example, a Member who exchanges a Tier 2 vacation ownership week may book at any resort accommodation available in Tier 1 or Tier 2 by paying the Base Exchange Fee. If the Member decides to vacation at a Tier 4 accommodation, they would pay a \$450 Upgrade Fee in addition to the Base Exchange Fee. See the chart below as a reference guide for the cost to upgrade to different Tiers.

A Member who exchanges a Tier 5 week may book any resort accommodations available in Tier 3, 4 or 5 by paying the Base Exchange Fee. If a Member opts to reserve a Tier 6 week, then

according to the chart below, a \$225 Upgrade Fee, as well as the Base Exchange Fee, would be required.

Members who deposit a Tier 4, 5 or 6 week may opt to book a lower Tier exchange (either a Tier 1, 2 or 3, based on the chart below) to potentially receive a bonus week deposit. For example:

- Members who deposit a Tier 4 week may opt to book two exchanges into Tier 1 resort accommodations.
- Members who deposit a Tier 5 or 6 week may opt to book two exchanges into Tier 1 or 2 resort accommodations.

	TO TIER 1	TO TIER 2	TO TIER 3	TO TIER 4	TO TIER 5	TO TIER 6
From Tier 1	\$0	\$225	\$450	\$675	\$900	\$1,125
From Tier 2	\$0	\$0	\$225	\$450	\$675	\$900
From Tier 3	\$0	\$0	\$0	\$225	\$450	\$675
From Tier 4	\$0 (1 for 2)	\$0	\$0	\$0	\$225	\$450
From Tier 5	\$0 (1 for 2)	\$0 (1 for 2)	\$0	\$0	\$0	\$225
From Tier 6	\$0 (1 for 2)	\$0 (1 for 2)	\$0	\$0	\$0	\$0

## Membership Enrollment

Destination Xchange offers two membership types.

### HOA CORPORATE MEMBERSHIP

Some HOAs may have chosen to include Destination Xchange as part of their ownership. Owners can find out if their HOA is participating in a corporate membership by simply calling Owner Services at **800-463-7256**.

### INDIVIDUAL MEMBERSHIP

Owners can enroll as a Member of Destination Xchange online by logging in to [hiltongrandvacations.com](http://hiltongrandvacations.com) or by contacting Owner Services. Refer to the Fee Schedule on page 12 for Membership Fees.

For HOA corporate memberships, annual membership fees are included as part of the annual maintenance fees.

## Designated Member

Each membership must have a designated Primary Member who is the individual to whom all communication will be sent.

## Individual Membership Renewal

In order to book an exchange reservation, your Destination Xchange membership must be active through the departure date of your preferred exchange travel date. Memberships can be renewed on or before the expiration date of the membership. Members can renew their membership online by logging in as a Member on [hiltongrandvacations.com](http://hiltongrandvacations.com) or by contacting Owner Services.

## Individual Membership Cancellation

Please contact Owner Services before your membership expiration date to cancel your Destination Xchange membership. There is no refund of paid membership fees, deposited weeks or any fees paid on open exchange reservations. Your membership must remain active through the departure date of all open exchange reservations.

## Depositing Your Week

Contact Owner Services to deposit your ownership week with Destination Xchange. When depositing your week, you must follow the reservation booking rules and windows defined in your

ownership usage documents. Maintenance fees must be paid in full to deposit ownership weeks into Destination Xchange. All deposits are considered final and may not be canceled.

If you wish to deposit a week for a future use year for which maintenance fees have not yet been assessed, you must prepay estimated maintenance fees based on the assessment for the current use year. Any balance due will be reflected in the subsequent maintenance fee billing statement.

If you own a Float Week, you'll need to secure a reservation with your ownership prior to depositing the week into Destination Xchange. It's recommended that you secure your week as early as possible as space is subject to availability.

## Late Deposits

A Late Deposit Fee will be charged based on the following conditions:

- Tier 1 and Tier 2 weeks can be deposited up to three months (91 days) prior to the arrival date of the week being deposited before the Late Deposit Fee applies.
- Tier 3 and Tier 4 weeks can be deposited up to 31 days prior to the arrival date of the week being deposited before the Late Deposit Fee applies.
- Tier 5 and Tier 6 weeks can be deposited up to 14 days prior to the arrival date of the week being deposited before the Late Deposit Fee applies.

Refer to the Fee Schedule on page 12 for the Late Deposit Fee.

As a great advantage over other exchange providers, the exchange value of your vacation ownership week will not be penalized when depositing late, and there is no advance booking window restriction when booking your exchange reservation.

### CHART FOR DEPOSITING YOUR WEEK

Tier 1 and 2	1-90 days*	91 days-24 months
Tier 3 and 4	1-30 days*	31 days-24 months
Tier 5 and 6	1-13 days*	14 days-24 months

\*Late Deposit Fee applies.

## Booking Your Destination Xchange Vacation

### ONLINE

1. Determine where you'd like to vacation by logging in at [hiltongrandvacations.com](http://hiltongrandvacations.com), clicking "Traditional Destination Xchange" and then selecting "Search For Availability", where you can search live availability for over 4,800 resorts worldwide. A small sampling of some of the resorts and destinations available through Destination Xchange are listed in the Resort Directory section of this guide.
2. Search availability for your preferred resort and travel dates. Then follow the prompts to select your dream vacation, pay the Standard Base Exchange Fee plus any applicable Upgrade Fees or add-ons and confirm your reservation in real time. Your Destination Xchange membership must be active through the departure date of your preferred exchange travel date.

You may also contact Owner Services for assistance with booking your exchange reservation. If you decide to book a stay using the online booking method, you'll automatically receive \$10 off the Base Exchange Fee.

The resort will receive your confirmed reservation information a week before your arrival date. Please wait until then to contact the resort to coordinate check-in or request any special needs. Some resorts charge resort fees or require deposits for amenities. Refer to your confirmation letter for details or contact the resort directly.

### Reservation Cancellation

Reservations are final at time of booking; no modifications are permitted. If you cancel a reservation at least 14 days in advance of the arrival date, you'll be able to make an additional exchange request with the deposited vacation ownership week, provided that you pay an exchange Cancellation Fee. If you cancel a reservation within 14 days of the arrival date, you'll not be able to make an additional exchange request, and the deposited week is forfeited. Refer to the Fee Schedule on page 12 for the Cancellation Fee.

Regardless of the notice of cancellation given, the Base Exchange Fee and any applicable Upgrade Fees paid will not be refunded. You're encouraged to purchase the Destination Xchange Protection Plan at the time of booking to safeguard the deposited week and avoid being charged the exchange Cancellation Fee.

### Destination Xchange Protection Plan

As you're preparing for your vacation, what if:

- You have an unexpected family or work emergency?
- Your flights are canceled?
- Weather interferes with your ability to travel?

Members of Destination Xchange have the ability to safeguard their deposited week in case the unexpected happens at vacation time.

Purchasing the Destination Xchange Protection Plan per exchange reservation will ensure you're not subject to the Cancellation Fee should you need to cancel your exchange reservation, up to 24 hours prior to your arrival date.

Members may only purchase the Destination Xchange Protection Plan at the time of booking each exchange reservation. Refer to the Fee Schedule on page 12 for the DEX Protection Plan Fee.

Please note that all reservation fees, including but not limited to Base Exchange Fees, Upgrade Fees and Guest Certificate Fees, are final. The Protection Plan will safeguard your deposit; it won't refund any fees paid. Applicable reservation fees will be required on subsequent exchange reservations.

## Procedures for Checking-In and Reservation Rules

### IN-RESORT RULES

Each occupant of an accommodation must comply with the rules of that resort and Destination Xchange at all times. No Member or Guest is permitted to keep an animal, bird, fish or other livestock in a resort accommodation other than where resort rules allow, such as in the case of ADA service animals.

### CHECK-IN AFTER THE PLANNED ARRIVAL DATE

If you're not intending to check-in at the resort on the originally booked date of arrival, or your plans change and you're unable to arrive as previously scheduled, you must contact the resort front desk reception at least 24 hours prior to the original arrival date and advise when you'll be arriving. Failure to notify front desk reception may result in the cancellation of the reservation and the possibility that there may be no availability when you arrive.

### NON-ARRIVAL

If you don't check-in to the resort for your confirmed reservation, you'll be considered a no-show. The deposited week will be forfeited and all fees previously paid won't be refunded.

### OCCUPANCY OF THE ACCOMMODATION

Reservations can be booked by the Members named on the Membership Agreement. You may arrange for the reservation to be used by a non-Member Guest not named on the Membership Agreement by purchasing a Guest Certificate.

### Guest Certificates

Would you like to give a family member or friend your requested vacation week as a gift? Destination Xchange welcomes friends and family to our resorts and would love to provide them with the opportunity to create new experiences and adventures. To make this possible, as a Destination Xchange Member, you can purchase a Guest Certificate when you confirm your reservation. You can provide the name of the guest who'll be checking in at the time of booking the reservation or, thereafter, by contacting Owner Services to update the reservation. Refer to the Fee Schedule on page 12 for Guest Certificate Fees.

### Reservations Made for Commercial Gain

Reservations cannot be made for commercial gain. Destination Xchange has been created for the enjoyment of all Members. Reservations made solely to sell or rent, for a profit or significant financial gain, aren't permitted. If such practices are discovered, we reserve the right to cancel those reservations and may suspend/cancel the membership.

### Helpful Tips

Destination Xchange offers expanded choice and flexibility beyond your traditional ownership usage options, enabling you to vacation when and where you want. Following, are some helpful tips to help you get the most out of your membership.

### CHANGE OF PLANS? NO PROBLEM.

Life comes with many unexpected events and we understand there may be times when adjustments to your scheduled vacation are needed. This is why, as a Member of Destination Xchange, you can purchase the Destination Xchange Protection Plan at the time of booking your exchange reservation and have the benefit of canceling your reservation without losing your deposited week and avoiding an exchange Cancellation Fee. If you didn't purchase the Destination Xchange Protection Plan, you'll still be able to retain your deposited week by paying the exchange Cancellation Fee.

**SAVE TIME AND MONEY BY USING ONLINE SERVICES**

For maximum convenience, log in at [hiltongrandvacations.com](http://hiltongrandvacations.com) 24 hours a day to book your exchange reservations in real time. By booking your exchange reservations online, you'll automatically receive \$10 off the Base Exchange Fee.

**USE DESTINATION XCHANGE UPGRADES  
BASED ON YOUR VACATION NEEDS**

Would you like to vacation during different times of the year? Do you need a larger accommodation for all of your guests? We make it possible to enjoy all of the locations and accommodations Destination Xchange has to offer with the innovative Destination Xchange Tier System. Refer to the Fee Schedule on page 12 for Tier Upgrade Fees.

**Online Member Accounts and Feedback****HOW DO YOU SET UP ONLINE ACCOUNTS?**

Additional program information and updates can be found at [hiltongrandvacations.com](http://hiltongrandvacations.com). Make sure to keep your contact information details updated in order to receive program communications, particularly via email. Here's how to register a Member account:

- Go to [hiltongrandvacations.com](http://hiltongrandvacations.com)
- Click on "Register" next to the log in
- Enter the required fields and set up your username and password
- A confirmation email will be sent to your email address and you'll be asked to validate the account

**ACCESSIBILITY REQUESTS**

We're committed to providing wonderful vacations for all of our Members and take into consideration the needs of those who have a disability or an access requirement.

We have an ongoing program of commitment, which consists of:

- Ensuring we aim to comply with disability discrimination legislation and exceed the requirements (where possible) regarding the refurbishment of our resorts
- Making appropriate enhancements to resorts and resort plans
- Improving internal awareness and training
- Providing accurate information on our website and in other communications, including information on access, available facilities and auxiliary aids

- Communicating with our Members via regular disability forums and surveys to identify areas for improvement
- Producing compliant literature and communicating within the same guidelines

To ensure that we continue with our quest to provide seamless experiences, we encourage Members to let us know of any requirements they might have relating to accessibility prior to arrival at a resort destination. We appreciate any information you can share in advance, which will assist our resort teams in providing you with any requirements you may have during your stay. Your comfort and enjoyment remain our priority.

Members can select to have their membership account flagged with details that they'd like us to be aware of. This can be recorded on your account through your accessibility profile or by telling your reservationist if booking by phone. To update your accessibility profile online, please visit [hiltongrandvacations.com](http://hiltongrandvacations.com), log in to your Member Area, click on "Preferences" on the left menu, then the "Accessibility" tab. Select the preferences that you wish us to be aware of or that may make your vacation experience more comfortable.

If you have any access requirements or needs you wish to discuss or want assistance in locating a resort that can provide comfortable accommodations for your needs, please contact us at your earliest convenience. Adapted units are available on a first-come, first-served basis and are subject to availability.

- For North American resorts, please call **888-250-6150**
- For European resorts, please call **+44 (0) 845 359 0009**
- Email any resort accessibility requests to [accessrequirements@hgv.com](mailto:accessrequirements@hgv.com)

Additional information for resorts, including resort terrain and accessibility of common areas, is available online at [hiltongrandvacations.com](http://hiltongrandvacations.com). Each resort has its own accessibility page that offers helpful details regarding resort grounds terrain, accessibility of common areas and any aids available on request, such as shower chairs or toilet risers. We've also listed information on area conveniences where possible to allow you to arrive at your destination worry-free.





## Contact Information

### Owner Services

One call does it all. To provide you with the best possible service, all Destination Xchange services via phone for North America traditional deeded week Owners are provided by Owner Services, the team that knows you and your ownership.

### HOURS OF OPERATION

Monday–Saturday, 9 a.m. to 9 p.m. ET  
(Closed Sundays and major holidays)

### HOW TO REACH US

Phone: **800-463-7256** (toll free) or **407-226-9500** (international)

Email: [ownerservices@hgv.com](mailto:ownerservices@hgv.com)

Online: [hiltongrandvacations.com](http://hiltongrandvacations.com)

## FEES-AT-A-GLANCE

# Destination Xchange

### Individual Membership Fees

1 Year	\$89
2 Years	\$159
3 Years	\$219
5 Years	\$299

For HOA memberships, annual membership fees are included as part of the annual maintenance fees.

### Exchange Fees

Base Exchange Fee (phone reservation)	\$189
Base Exchange Fee (online reservation)	\$179
Protection Plan Fee	\$89
Guest Certificate Fee (phone reservation)	\$55
Guest Certificate Fee (online reservation)	\$45
Exchange Cancellation Fee	\$200
Late Deposit Fee	\$155

Program fees will be reviewed by the operating company approximately every year and are subject to change.

### TIER UPGRADE FEE CHART

	TO TIER 1	TO TIER 2	TO TIER 3	TO TIER 4	TO TIER 5	TO TIER 6
From Tier 1	\$0	\$225	\$450	\$675	\$900	\$1,125
From Tier 2	\$0	\$0	\$225	\$450	\$675	\$900
From Tier 3	\$0	\$0	\$0	\$225	\$450	\$675
From Tier 4	\$0 (1 for 2)	\$0	\$0	\$0	\$225	\$450
From Tier 5	\$0 (1 for 2)	\$0 (1 for 2)	\$0	\$0	\$0	\$225
From Tier 6	\$0 (1 for 2)	\$0 (1 for 2)	\$0	\$0	\$0	\$0





Destination Xchange  
Resort  
Directory



---

## Over 4,800 Resorts Available Around The World



Start checking off more destinations from your bucket list with Destination Xchange. With over 4,800 resort options in the most popular vacation destinations worldwide, your vacation possibilities are endless.

The destinations and resorts listed in the following directory are just a small sample of the many options available through Destination Xchange. Hilton Vacation Club resorts are identified by the icon .

**Log in at [hiltongrandvacations.com](https://hiltongrandvacations.com)**

**or contact Owner Services for assistance with booking your next vacation.**

---

Europe  
**1,095+**  
RESORTS

Asia  
**285+**  
RESORTS

Africa  
**210+**  
RESORTS

Australia  
**155+**  
RESORTS

The number of resorts and locations are subject to change without notice.

# Destinations

## ALBERTA

Banff Gate Mountain Resort .....	18
----------------------------------	----

## BRITISH COLUMBIA

Clock Tower .....	18
Embarc Panorama .....	18
Embarc Ucluelet .....	18
Embarc Vancouver .....	18
Hilton Grand Vacations Club Whistler .....	19
VI at Rosedale on Robson .....	19

## ONTARIO

Blue Mountain, a Hilton Grand Vacations Club .....	19
---	----

## QUEBEC

Tremblant, a Hilton Grand Vacations Club .....	19
---	----

## ARIZONA

Bell Rock Inn .....	20
Rancho Mañana, a Hilton Vacation Club .....	20
Kohl's Ranch Lodge .....	20
London Bridge Resort .....	20
Los Abrigados Resort and Spa .....	21
PVC at The Roundhouse Resort .....	21
Ridge on Sedona, a Hilton Vacation Club .....	21
Scottsdale Camelback Resort .....	21
Scottsdale Links Resort, a Hilton Vacation Club .....	21
Scottsdale Villa Mirage, a Hilton Vacation Club .....	22
Sedona Springs Resort .....	22
Sedona Summit, a Hilton Vacation Club .....	22
The Roundhouse Resort .....	22
Varsity Club Tucson, a Hilton Vacation Club .....	22
Villas at Poco Diablo .....	23
Villas of Sedona .....	23

## CALIFORNIA

Club Donatello .....	23
Desert Isle of Palm Springs .....	23
Grand Pacific Resorts at Channel Island Shores .....	23
Grand Pacific Resorts at Coronado Beach Resort .....	23
Grand Pacific Resorts at RiverPointe Napa Valley .....	24
Hilton Grand Vacations Club Palm Desert .....	24
Hilton Vacation Club Lake Tahoe Resort .....	24
Palm Canyon, a Hilton Vacation Club .....	24
RVC's Cimarron Golf Resort Palm Springs .....	24
Riviera Beach, a Hilton Vacation Club .....	25
Riviera Shores, a Hilton Vacation Club .....	25
Riviera Oaks Resort & Racquet Club .....	25

San Luis Bay Inn, a Hilton Vacation Club .....	25
Tahoe Beach and Ski Club .....	25
Tahoe Seasons, a Hilton Vacation Club .....	26
The Lodge at Lake Tahoe .....	26

## FLORIDA

Alhambra Villas .....	26
Alhambra at Poinciana .....	26
Aqua Sol, a Hilton Vacation Club .....	26
Bryan's Spanish Cove .....	27
Charter Club Naples Bay, a Hilton Vacation Club .....	27
Club Regency of Marco Island .....	27
Crescent on South Beach, a Hilton Vacation Club .....	27
Cypress Pointe, a Hilton Vacation Club .....	27
Daytona Beach Regency, a Hilton Vacation Club .....	27
Grand Beach, a Hilton Vacation Club .....	28
Grande Villas, a Hilton Vacation Club .....	28
Hilton Grand Vacations Club in Sandestin Golf and Beach Resort .....	28
Mystic Dunes, a Hilton Vacation Club .....	28
Orbit One Vacation Villas .....	28
Parkway International Resort .....	29
Polynesian Isles, a Hilton Vacation Club .....	29
Plantation Beach Club at Indian River Plantation .....	29
The Cove on Ormond Beach, a Hilton Vacation Club .....	29

## HAWAII

Grand Pacific Resorts at Hanalei Bay Resort .....	29
Grand Pacific Resorts at Makai Club Resort .....	30
Hilton Vacation Club Ka'anapali Beach .....	30
Imperial Hawaii Vacation Club .....	30
Kapaa Shore .....	30
Ke Nani Kai .....	30
Lawai Beach Resort .....	30
Royal Kuhio .....	31
RVC at Kona Reef Resort .....	31
Sea Mountain .....	31
Sea Village .....	31
The Bay Club, a Hilton Grand Vacations Club .....	31
The Modern, a Hilton Vacation Club .....	32
The Point at Poipu, a Hilton Vacation Club .....	32
Valley Isle .....	32

## INDIANA

Varsity Club South Bend, a Hilton Vacation Club .....	32
--	----

## MARYLAND

Coconut Malorie .....	33
-----------------------	----



<b>MISSOURI</b>			
The Suites at Fall Creek .....	33	<b>COZUMEL</b>	
		Allegro Cozumel .....	41
<b>NEVADA</b>		<b>NUEVO VALLARTA</b>	
Cancun Las Vegas, a Hilton Vacation Club .....	33	Grand Luxxe Nuevo Vallarta .....	41
Desert Retreat, a Hilton Vacation Club .....	33	<b>PUERTO VALLARTA</b>	
Kingsbury of Tahoe .....	33	RVC's Club Regina Puerto Vallarta.....	41
Polo Towers, a Hilton Vacation Club .....	34	<b>QUINTANA ROO</b>	
The Carriage House.....	34	Grand Luxxe Riviera Maya .....	42
The Ridge Pointe.....	34	<b>SAN JOSE DEL CABO</b>	
<b>NEW MEXICO</b>		Cabo Azul, a Hilton Vacation Club .....	42
Villas de Santa Fe, a Hilton Vacation Club .....	34	RVC's Club Regina Los Cabos .....	42
<b>NORTH CAROLINA</b>		<b>ZIHUATANEJO</b>	
Atlantic Beach Resort.....	34	Hilton Grand Vacations Club Zihuatanejo .....	43
Beachwoods, a Hilton Vacation Club .....	35	<b>ARUBA</b>	
Fairway Forest Resort .....	35	Barceló Aruba.....	44
<b>SOUTH CAROLINA</b>		<b>DOMINICAN REPUBLIC</b>	
Church Street Inn .....	35	Grand Palladium Punta Cana Resort & Spa .....	44
Dunes Village Resort.....	35	Occidental Punta Cana .....	44
Island Links Resort.....	35	<b>SINT MAARTEN</b>	
Ocean Club Resort.....	36	Atrium Beach Resort and Spa .....	44
Royal Dunes Resort.....	36	Flamingo Beach, a Hilton Vacation Club .....	45
Sandpebble Beach Club .....	36	Royal Palm, a Hilton Vacation Club .....	45
Sea Mystique.....	36	<b>ENGLAND</b>	
<b>TENNESSEE</b>		Cromer Country Club.....	46
Bent Creek Golf Village, a Hilton Vacation Club .....	36	Pine Lake Resort.....	46
Sunrise Ridge Resort.....	37	Thurnham Hall .....	46
<b>UTAH</b>		Woodford Bridge Country Club .....	46
Cedar Breaks Lodge & Spa .....	37	Wychnor Park Country Club.....	46
Park Plaza Resort .....	37	<b>SCOTLAND</b>	
RVC's The Miners Club.....	37	Craigendarroch Lodges, Managed by Hilton Grand Vacations...	47
<b>VIRGINIA</b>		Coylumbridge Highland Lodges.....	47
Beach Quarters Resort.....	38	The Kenmore Club.....	47
Boardwalk Resort & Villas.....	38	<b>AUSTRIA</b>	
Greensprings, a Hilton Vacation Club .....	38	Alpine Club .....	47
Ocean Beach Club, a Hilton Vacation Club .....	38	<b>BULGARIA</b>	
Oceanaire, a Hilton Vacation Club .....	39	Balkan Jewel Resort .....	48
The Historic Powhatan, a Hilton Vacation Club .....	39	<b>ITALY</b>	
Turtle Cay Resort .....	39	Palazzo at Soriano .....	48
<b>WASHINGTON</b>		Palazzo Catalani .....	48
Blackbird Lodge .....	39	<b>FRANCE</b>	
Point Brown.....	40	Le Club Mougins .....	48
RVC's Sandcastle at Birch Bay .....	40	Royal Regency Paris Vincennes.....	49
VI at Homestead .....	40	<b>PORTUGAL</b>	
<b>WISCONSIN</b>		Vilar do Golf.....	49
Tamarack and Mirror Lake Resort.....	40	<b>SPAIN</b>	
<b>ACAPULCO</b>		Club Cala Blanca.....	49
Mayan Palace Acapulco.....	41	Club del Carmen.....	49
		Jardines del Sol .....	49
		Los Amigos Beach Club .....	50
		Royal Oasis Club at Pueblo Quinta .....	50
		Royal Sunset Beach Club .....	50
		Royal Tenerife Country Club .....	50
		Sahara Sunset.....	50
		Santa Barbara Golf and Ocean Club.....	51
		Sunset Bay Club .....	51
		Sunset Harbour Club.....	51
		Sunset View Club .....	51
		White Sands Beach Club.....	51
		<b>SOUTH AFRICA</b>	
		Avalon Springs.....	52
		Breakers Resort.....	52
		Champagne Sports Resort.....	52
		The Peninsula .....	52
		Wilderness Dunes.....	52
		<b>INDONESIA</b>	
		Anantara Vacation Club at Avani Seminyak Bali.....	53
		<b>THAILAND</b>	
		Anantara Vacation Club Bophut Koh Samui.....	53
		Anantara Vacation Club Mai Khao Phuket.....	53
		<b>AUSTRALIA</b>	
		Bellbrae Country Club .....	54
		Mount Martha Valley Resort .....	54
		Tamarind Sands .....	54
		<b>NEW ZEALAND</b>	
		Anantara Vacation Club at Oaks Shores Queenstown.....	54

## ALBERTA



## Banff Gate Mountain Resort

302 George Biggy Sr Road, Dead Man's Flats, Alberta T1W 2T8, Canada, **403-609-9229**

ACCOMMODATION	OCCUPANCY	LOW SEASON	MID SEASON	HIGH SEASON	PEAK SEASON
2 BDR	6/4	TIER 3	TIER 3	TIER 4	TIER 4
2025 Weeks		16-21, 39-47	37-38	1-6, 8-15, 22-23, 35-36, 48-50	7, 24-34, 51-52
2026 Weeks		16-21, 39-47	37-38	1-6, 8-15, 22-23, 35-36, 48-50	7, 24-34, 51-52

Check-in day for weekly occupancy: Friday/Saturday. A \$100 authorization hold will also be placed on a credit card upon check-in for incidentals. Resort charges a fee in the amount of \$9.35 US dollars plus 5% Canadian tax/day paid by guests directly to the resort upon check-in. This mandatory fee includes access to WiFi, unlimited movie rentals, and additional resort amenities. Guests must contact resort if arriving late or on a day other than what is listed on confirmation.

## BRITISH COLUMBIA



## Clock Tower

4341 Village Lane, Whistler, British Columbia, Canada, V0N 1B4, **604-932-4724**

ACCOMMODATION	OCCUPANCY	LOW SEASON	MID SEASON	HIGH SEASON	PEAK SEASON
Studio	2/2	TIER 2	TIER 2	TIER 3	TIER 4
2025 Weeks		17-21, 39-47	16, 37-38	14-15, 22-25, 34-36, 48-49	1-13, 26-33, 50-52
2026 Weeks		17-21, 39-47	16, 37-38	14-15, 22-25, 34-36, 48-49	1-13, 26-33, 50-52

Check-in day for weekly occupancy: Saturday. No elevator. Limited availability.



## Embarc Panorama

2000 Panorama Drive, Panorama, British Columbia, Canada V0A 1T0, **250-342-6941**

ACCOMMODATION	OCCUPANCY	LOW SEASON	MID SEASON	HIGH SEASON	PEAK SEASON
Mountain Suite	2/2	TIER 2	TIER 3	TIER 3	TIER 4
1 BDR	2/4	TIER 3	TIER 4	TIER 4	TIER 6
2 BDR	4/6	TIER 4	TIER 5	TIER 5	TIER 6
2025 Weeks		12-21, 39-48	22, 35-38, 49	1-5, 8-9, 23-34	6-7, 10-11, 50-52
2026 Weeks		13-20, 38-48	21-24, 36-37, 49-50	1-5, 8-9, 12, 25-35	6-7, 10-11, 51-52

Check-in day for weekly occupancy: Any day.



## Embarc Ucluelet

1971 Harbour Crescent, Ucluelet, British Columbia, Canada V0R 3A0, **250-726-2557**

ACCOMMODATION	OCCUPANCY	LOW SEASON	MID SEASON	HIGH SEASON	PEAK SEASON
1 BDR	2/4	TIER 3	TIER 4	TIER 4	TIER 6
2 BDR	4/6	TIER 4	TIER 5	TIER 6	TIER 6
2025 Weeks		1-5, 43-46, 48-49	8-9, 13-19, 21-22, 38-39, 41-42	6-7, 10-12, 20, 23-25, 27-37, 40, 47, 50-52	26
2026 Weeks		1-5, 8, 43-46, 48-49	9, 12-19, 21-23, 38-39, 41-42	6-7, 10-11, 20, 24-26, 28-37, 40, 47, 50-52	27

Check-in day for weekly occupancy: Any day.



## Embarc Vancouver

2951-1001 Hornby Street, Vancouver, British Columbia, Canada V6Z 2R9, **604-331-1000**

ACCOMMODATION	OCCUPANCY	LOW SEASON	MID SEASON	HIGH SEASON	PEAK SEASON
Studio	2/2	-	TIER 3	TIER 4	TIER 5
1 BDR	2/4	-	TIER 4	TIER 5	TIER 6
1 BDR 2 BA	2/4	-	TIER 5	TIER 6	TIER 6
2025 Weeks		-	1-4, 40-46, 48-49	5-24, 35-39, 47	25-34, 50-52
2026 Weeks		-	1-5, 41-46, 48-50	6-25, 36-40, 47	26-35, 51-52

Check-in day for weekly occupancy: Any day. Valet and self-parking are available for a fee.



### **M Hilton Grand Vacations Club Whistler**

4580 Chateau Boulevard, Whistler, British Columbia, Canada V8E 0Z6, **604-938-3030**

ACCOMMODATION	OCCUPANCY	LOW SEASON	MID SEASON	HIGH SEASON	PEAK SEASON
Studio	2/2	TIER 2	TIER 2	TIER 3	TIER 3
1 BDR	2/4	TIER 3	TIER 3	TIER 4	TIER 6
1 BDR Lodge	2/4	TIER 3	TIER 4	TIER 5	TIER 6
2 BDR	4/6	TIER 4	TIER 5	TIER 6	TIER 6
2 BDR Lodge	4/6	TIER 4	TIER 5	TIER 6	TIER 6
3 BDR	6/8	TIER 6	TIER 6	TIER 6	TIER 6
<b>2025 Weeks</b>		16-22, 35-45	23-24	1-6, 8-9, 12-15, 25-34, 46-49	7, 10-11, 50-52
<b>2026 Weeks</b>		17-23, 36-46	24-25	1-6, 8-9, 12-16, 26-35, 47-50	7, 10-11, 51-52

Check-in day for weekly occupancy: Any day.



### **VI at Rosedale on Robson**

838 Hamilton Street, Vancouver, British Columbia, Canada, V6B 6A2, **604-689-8033**

ACCOMMODATION	OCCUPANCY	LOW SEASON	MID SEASON	HIGH SEASON	PEAK SEASON
1 BDR	4/2	TIER 1	TIER 2	TIER 3	TIER 4
<b>2025 Weeks</b>		1-3, 48-50	4-14, 41-47	15-21, 38-40, 51-52	22-37
<b>2026 Weeks</b>		1-3, 48-50	4-14, 41-47	15-21, 38-40, 51-52	22-37

Check-in day for weekly occupancy: Friday.

## ONTARIO



### **M Blue Mountain, a Hilton Grand Vacations Club**

277 Jozo Weider Boulevard, The Blue Mountains, Ontario, Canada L9Y 0V2, **705.443.4500**

ACCOMMODATION	OCCUPANCY	LOW SEASON	MID SEASON	HIGH SEASON	PEAK SEASON
Lodge Suite	2/2	TIER 3	TIER 3	TIER 4	TIER 5
1 BDR 2 BA	2/4	TIER 4	TIER 4	TIER 5	TIER 6
2 BDR	4/6	TIER 4	TIER 5	TIER 6	TIER 6
1 BDR 2 BA Harvest	2/4	TIER 4	TIER 4	TIER 5	TIER 6
1 BDR 2 BA Huron Cottage	2/4	TIER 4	TIER 5	TIER 6	TIER 6
2 BDR Harvest	4/6	TIER 5	TIER 5	TIER 6	TIER 6
2 BDR Huron Cottage	4/6	TIER 5	TIER 6	TIER 6	TIER 6
<b>2025 Weeks</b>		12-16, 41-47	1-2, 17-19, 36-39	3-6, 11, 20-24, 30-35, 40, 48-49, 52	7-10, 25-29, 50-51
<b>2026 Weeks</b>		13-17, 42-48	1-2, 18-21, 36-39, 41	3-6, 11-12, 22-25, 31-35, 40, 49, 52	7-10, 26-30, 50-51

Check-in day for weekly occupancy: Any day.

## QUEBEC



### **M Tremblant, a Hilton Grand Vacations Club**

200 chemin des Saisons, Mont-Tremblant, Quebec, Canada J8E 1G1, **819-681-3535**

ACCOMMODATION	OCCUPANCY	LOW SEASON	MID SEASON	HIGH SEASON	PEAK SEASON
Studio Les Terrasses	2/2	TIER 2	TIER 2	TIER 3	TIER 4
1 BDR	2/4	TIER 3	TIER 3	TIER 4	TIER 5
1 BDR Les Terrasses	2/4	TIER 3	TIER 4	TIER 4	TIER 6
1 BDR 2 BA	2/4	TIER 3	TIER 4	TIER 5	TIER 6
1 BDR 2 BA Les Terrasses	2/4	TIER 3	TIER 4	TIER 5	TIER 6
2 BDR	4/6	TIER 4	TIER 5	TIER 6	TIER 6
2 BDR Les Terrasses	4/6	TIER 4	TIER 5	TIER 6	TIER 6
3 BDR	6/8	TIER 4	TIER 6	TIER 6	TIER 6
<b>2025 Weeks</b>		12-17, 41-46	18-23, 35-39, 47-48	1-4, 7, 10-11, 24-29, 31-34, 40	5-6, 8-9, 30, 49-52
<b>2026 Weeks</b>		13-18, 41-47	1, 19-24, 36-39, 48-49	2-5, 8, 11-12, 25-28, 30-35, 40	6-7, 9-10, 29, 50-52

Check-in day for weekly occupancy: Any day.



## ARIZONA

**M Bell Rock Inn**6246 State Route 179, Sedona, Arizona 86351, United States, **928-282-4161**

ACCOMMODATION	OCCUPANCY	LOW SEASON	MID SEASON	HIGH SEASON	PEAK SEASON
Studio Efficiency	4/2	-	TIER 1	TIER 2	TIER 2
Studio	4/2	-	TIER 2	TIER 2	TIER 3
1 BDR	4/4	-	TIER 2	TIER 3	TIER 3
2 BDR	6/6	-	TIER 3	TIER 4	TIER 4
<b>2025 Weeks</b>		-	1-3, 48-50	4-14, 17-26, 28-46	15-16, 27, 47, 51-52
<b>2026 Weeks</b>		-	1-3, 48-50	4-12, 15-26, 28-46	13-14, 27, 47, 51-52

Check-in day for weekly occupancy: Any day.

**M Rancho Mañana, a Hilton Vacation Club**5720 East Rancho Manana Boulevard, Cave Creek, Arizona 85331, United States, **480-575-7900**

ACCOMMODATION	OCCUPANCY	LOW SEASON	MID SEASON	HIGH SEASON	PEAK SEASON
2 BDR	4/4	-	TIER 4	TIER 5	TIER 6
2 BDR (Twin)	4/4	-	TIER 4	TIER 5	TIER 6
2 BDR Golf Course View	4/4	-	TIER 5	TIER 6	TIER 6
2 BDR Family	6/4	-	TIER 5	TIER 6	TIER 6
<b>2025 Weeks</b>		-	1-3, 48-50	4-14, 17-26, 28-46	15-16, 27, 47, 51-52
<b>2026 Weeks</b>		-	1-3, 48-50	4-12, 15-26, 28-46	13-14, 27, 47, 51-52

Check-in day for weekly occupancy: Any day. No elevator.

**M Kohl's Ranch Lodge**202 South Kohl's Ranch Lodge Road, Payson, Arizona 85541, United States, **928-478-4211**

ACCOMMODATION	OCCUPANCY	LOW SEASON	MID SEASON	HIGH SEASON	PEAK SEASON
Studio Efficiency	2/2	-	TIER 2	TIER 2	TIER 2
Studio	2/2	-	TIER 2	TIER 2	TIER 3
1 BDR	4/2	-	TIER 3	TIER 3	TIER 4
2 BDR Cabin	6/2	-	TIER 4	TIER 4	TIER 5
2 BDR Cabin Deluxe	8/4	-	TIER 5	TIER 6	TIER 6
The Horton House	8/4	-	TIER 6	TIER 6	TIER 6
<b>2025 Weeks</b>		-	1-7, 48-50	8-13, 17-20, 22-24, 28-30, 32-34, 36-38, 42-46	14-16, 21, 25-27, 31, 35, 39-41, 47, 51-52
<b>2026 Weeks</b>		-	1-7, 48-50	8-12, 16-20, 22-24, 28-30, 32-34, 36-38, 42-46	13-15, 21, 25-27, 31, 35, 39-41, 47, 51-52

Check-in day for weekly occupancy: Any day.

**London Bridge Resort**1477 Queens Drive, Lake Havasu City, Arizona 86403, United States, **800-624-7939**

ACCOMMODATION	OCCUPANCY	LOW SEASON	MID SEASON	HIGH SEASON	PEAK SEASON
1 BDR	4/2	TIER 2	TIER 3	TIER 4	TIER 4
2 BDR	6/4	TIER 3	TIER 4	TIER 5	TIER 5
<b>2025 Weeks</b>		1-4, 49-50	5, 7-8, 13-14, 36-39, 44-45	6, 9-12, 15-23, 40-43, 46-48	24-35, 51-52
<b>2026 Weeks</b>		1-4, 49-50	5, 7-8, 15-16, 36-39, 44-45	6, 9-14, 17-23, 40-43, 46-48	24-35, 51-52

Check-in day for weekly occupancy: Friday/Saturday/Sunday.



### M Los Abridados Resort and Spa

160 Portal Lane, Sedona, Arizona 86336, United States, **928-282-1777**

ACCOMMODATION	OCCUPANCY	LOW SEASON	MID SEASON	HIGH SEASON	PEAK SEASON
Studio Efficiency	2/2	-	TIER 1	TIER 2	TIER 2
1 BDR	4/2	-	TIER 3	TIER 4	TIER 5
1 BDR Standard	4/2	-	TIER 3	TIER 4	TIER 5
1 BDR Deluxe	4/2	-	TIER 4	TIER 4	TIER 5
2 BDR	6/4	-	TIER 4	TIER 5	TIER 6
2 BDR Family	8/4	-	TIER 5	TIER 6	TIER 6
2 BDR Deluxe	6/6	-	TIER 5	TIER 6	TIER 6
2 BDR Suite	6/6	-	TIER 6	TIER 6	TIER 6
The Morris House	6/4	-	TIER 6	TIER 6	TIER 6
The Celebrity House	6/4	-	TIER 6	TIER 6	TIER 6
The Stone House	6/4	-	TIER 6	TIER 6	TIER 6
<b>2025 Weeks</b>		-	1-3, 48-50	4-14, 17-26, 28-46	15-16, 27, 47, 51-52
<b>2026 Weeks</b>		-	1-3, 48-50	4-12, 15-26, 28-46	13-14, 27, 47, 51-52

Check-in day for weekly occupancy: Any day.



### M PVC at The Roundhouse Resort

5801 Bucksprings Road, Pinetop, Arizona 85935, United States, **928-369-5100**

ACCOMMODATION	OCCUPANCY	LOW SEASON	MID SEASON	HIGH SEASON	PEAK SEASON
2 BDR Cabin	6/4	-	TIER 5	TIER 5	TIER 6
2 BDR Cabin Deluxe	6/4	-	TIER 5	TIER 6	TIER 6
<b>2025 Weeks</b>		-	1-7, 48-50	8-13, 17-20, 22-24, 28-30, 32-34, 36-38, 42-46	14-16, 21, 25-27, 31, 35, 39-41, 47, 51-52
<b>2026 Weeks</b>		-	1-7, 48-50	8-12, 16-20, 22-24, 28-30, 32-34, 36-38, 42-46	13-15, 21, 25-27, 31, 35, 39-41, 47, 51-52

Check-in day for weekly occupancy: Any day.



### M Ridge on Sedona, a Hilton Vacation Club

55 Sunridge Circle, Sedona, Arizona 86351, United States, **928-284-1200**

ACCOMMODATION	OCCUPANCY	LOW SEASON	MID SEASON	HIGH SEASON	PEAK SEASON
Studio	4/2	-	TIER 2	TIER 3	TIER 4
1 BDR	4/4	-	TIER 3	TIER 4	TIER 5
2 BDR	8/6	-	TIER 4	TIER 5	TIER 6
<b>2025 Weeks</b>		-	1-3, 48-50	4-14, 17-26, 28-46	15-16, 27, 47, 51-52
<b>2026 Weeks</b>		-	1-3, 48-50	4-12, 15-26, 28-46	13-14, 27, 47, 51-52

Check-in day for weekly occupancy: Any day.



### Scottsdale Camelback Resort

6302 East Camelback Road, Scottsdale, Arizona 85251, United States, **480-947-3300**

ACCOMMODATION	OCCUPANCY	LOW SEASON	MID SEASON	HIGH SEASON	PEAK SEASON
Studio Dlx	4/2	-	TIER 2	TIER 3	TIER 4
2 BDR	6/4	-	TIER 3	TIER 4	TIER 5
2 BDR Dlx	6/4	-	TIER 4	TIER 5	TIER 5
3 BDR Ste	8/6	-	TIER 6	TIER 6	TIER 6
<b>2025 Weeks</b>		-	1-3, 48-50	4-14, 17-26, 28-46	15-16, 27, 47, 51-52
<b>2026 Weeks</b>		-	1-3, 48-50	4-12, 15-26, 28-46	13-14, 27, 47, 51-52

Check-in day for weekly occupancy: Friday/Saturday/Sunday. No elevator.



### M Scottsdale Links Resort, a Hilton Vacation Club

16858 North Perimeter Drive, Scottsdale, Arizona 85260, United States, **480-563-0500**

ACCOMMODATION	OCCUPANCY	LOW SEASON	MID SEASON	HIGH SEASON	PEAK SEASON
1 BDR	4/2	TIER 2	TIER 3	TIER 4	TIER 5
2 BDR	6/4	TIER 3	TIER 4	TIER 5	TIER 5
3 BDR	8/6	TIER 4	TIER 5	TIER 5	TIER 6
<b>2025 Weeks</b>		28-33	25-27, 43-50	18-24, 34-42	1-17, 51-52
<b>2026 Weeks</b>		28-33	25-27, 43-50	18-24, 34-42	1-17, 51-52

Check-in day for weekly occupancy: Any day.



### **M** Scottsdale Villa Mirage, a Hilton Vacation Club

7887 East Princess Boulevard, Scottsdale, Arizona 85255, United States, **480-473-4000**

ACCOMMODATION	OCCUPANCY	LOW SEASON	MID SEASON	HIGH SEASON	PEAK SEASON
Studio	4/2	-	TIER 2	TIER 2	TIER 3
1 BDR	4/2	-	TIER 3	TIER 3	TIER 4
2 BDR	8/6	-	TIER 4	TIER 5	TIER 6
<b>2025 Weeks</b>		-	1-3, 48-50	4-14, 17-26, 28-46	15-16, 27, 47, 51-52
<b>2026 Weeks</b>		-	1-3, 48-50	4-12, 15-26, 28-46	13-14, 27, 47, 51-52

Check-in day for weekly occupancy: Any day.



### **Sedona Springs Resort**

55 Northview Road, Sedona, Arizona 86336, United States, **928-204-3400**

ACCOMMODATION	OCCUPANCY	LOW SEASON	MID SEASON	HIGH SEASON	PEAK SEASON
2 BDR	8/6	-	TIER 5	TIER 6	TIER 6
<b>2025 Weeks</b>		-	1-3, 48-50	4-14, 17-26, 28-46	15-16, 27, 47, 51-52
<b>2026 Weeks</b>		-	1-3, 48-50	4-12, 15-26, 28-46	13-14, 27, 47, 51-52

Check-in day for weekly occupancy: Saturday.



### **M** Sedona Summit, a Hilton Vacation Club

4055 Navoti Drive, Sedona, Arizona 86336, United States, **928-204-3100**

ACCOMMODATION	OCCUPANCY	LOW SEASON	MID SEASON	HIGH SEASON	PEAK SEASON
Studio	4/2	-	TIER 2	TIER 3	TIER 4
1 BDR	4/4	-	TIER 3	TIER 4	TIER 5
1 BDR Mesa Suite	4/4	-	TIER 4	TIER 4	TIER 5
1 BDR Sunset Suite	4/2	-	TIER 4	TIER 5	TIER 6
2 BDR	8/4	-	TIER 4	TIER 5	TIER 6
2 BDR Mesa Suite	8/4	-	TIER 6	TIER 6	TIER 6
2 BDR Sunset Suite	6/4	-	TIER 6	TIER 6	TIER 6
3 BDR Sunset Suite	10/6	-	TIER 6	TIER 6	TIER 6
<b>2025 Weeks</b>		-	1-3, 48-50	4-14, 17-26, 28-46	15-16, 27, 47, 51-52
<b>2026 Weeks</b>		-	1-3, 48-50	4-12, 15-26, 28-46	13-14, 27, 47, 51-52

Check-in day for weekly occupancy: Any day.



### **The Roundhouse Resort**

5829 Bucksprings Road, Pinetop, Arizona 85935, United States, **928-369-4848**

ACCOMMODATION	OCCUPANCY	LOW SEASON	MID SEASON	HIGH SEASON	PEAK SEASON
Studio	4/2	-	TIER 2	TIER 2	TIER 2
1 BDR	4/2	-	TIER 2	TIER 3	TIER 3
2 BDR	6/4	-	TIER 3	TIER 4	TIER 4
<b>2025 Weeks</b>		-	1-7, 48-50	8-13, 17-20, 22-24, 28-30, 32-34, 36-38, 42-46	14-16, 21, 25-27, 31, 35, 39-41, 47, 51-52
<b>2026 Weeks</b>		-	1-7, 48-50	8-12, 16-20, 22-24, 28-30, 32-34, 36-38, 42-46	13-15, 21, 25-27, 31, 35, 39-41, 47, 51-52

Check-in day for weekly occupancy: Friday. No elevator.



### **Varsity Club Tucson, a Hilton Vacation Club**

3855 East Speedway Boulevard, Tucson, Arizona 85716, United States, **520-318-6800**

ACCOMMODATION	OCCUPANCY	LOW SEASON	MID SEASON	HIGH SEASON	PEAK SEASON
Studio	2/2	TIER 1	TIER 2	TIER 2	TIER 2
1 BDR	4/2	TIER 2	TIER 2	TIER 3	TIER 3
2 BDR	6/4	TIER 2	TIER 3	TIER 4	TIER 4
<b>2025 Weeks</b>		28-33	25-27, 43-50	18-24, 34-42	147, 51-52
<b>2026 Weeks</b>		28-33	25-27, 43-50	18-24, 34-42	147, 51-52

Check-in day for weekly occupancy: Any day.



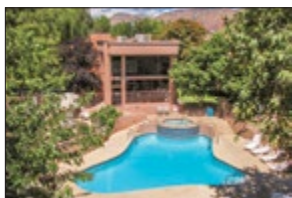


### Villas at Poco Diablo

1752 Highway 179, Sedona, Arizona 86336, United States, **928-204-3300**

ACCOMMODATION	OCCUPANCY	LOW SEASON	MID SEASON	HIGH SEASON	PEAK SEASON
Studio	4/2	-	TIER 2	TIER 2	TIER 3
1 BDR	4/2	-	TIER 2	TIER 2	TIER 3
2025 Weeks		-	1-3, 48-50	4-14, 17-26, 28-46	15-16, 27, 47, 51-52
2026 Weeks		-	1-3, 48-50	4-12, 15-26, 28-46	13-14, 27, 47, 51-52

Check-in day for weekly occupancy: Friday.



### Villas of Sedona

120 Kallof Place, Sedona, Arizona 86336, United States, **928-204-3400**

ACCOMMODATION	OCCUPANCY	LOW SEASON	MID SEASON	HIGH SEASON	PEAK SEASON
1 BDR	4/2	-	TIER 3	TIER 3	TIER 4
2 BDR	6/4	-	TIER 3	TIER 4	TIER 5
2025 Weeks		-	1-3, 48-50	4-14, 17-26, 28-46	15-16, 27, 47, 51-52
2026 Weeks		-	1-3, 48-50	4-12, 15-26, 28-46	13-14, 27, 47, 51-52

Check-in at Sedona Springs Resort. Check-in day for weekly occupancy: Friday.

## CALIFORNIA



### Club Donatello

501 Post Street, San Francisco, California 94102, United States, **415-441-7100**

ACCOMMODATION	OCCUPANCY	LOW SEASON	MID SEASON	HIGH SEASON	PEAK SEASON
Hotel Room	2/2	-	TIER 3	TIER 3	TIER 4
2025 Weeks		-	1-8, 47-51	9-18, 43-46, 52	19-42
2026 Weeks		-	1-8, 47-51	9-18, 43-46, 52	19-42

Check-in day for weekly occupancy: Thursday. \$25/week resort fee. Current parking rate is \$42/day, + \$20 for oversized vehicles. \$25 fee for each Cot/Rollaway bed.



### Desert Isle of Palm Springs

2555 East Palm Canyon Drive, Palm Springs, California 92264, United States, **760-327-8469**

ACCOMMODATION	OCCUPANCY	LOW SEASON	MID SEASON	HIGH SEASON	PEAK SEASON
1 BDR	4/4	-	-	-	TIER 4
2 BDR	6/6	-	-	-	TIER 5
2 BDR Townhouse	6/4	-	-	-	TIER 5
2025 Weeks		-	-	-	1-52
2026 Weeks		-	-	-	1-52

Check-in day for weekly occupancy: Friday. No elevator.



### Grand Pacific Resorts at Channel Island Shores

1311 Mandalay Beach Road, Oxnard, California 93035, United States, **805-330-9271**

ACCOMMODATION	OCCUPANCY	LOW SEASON	MID SEASON	HIGH SEASON	PEAK SEASON
2 BDR	6/4	-	TIER 5	TIER 6	TIER 6
2025 Weeks		-	1-5, 44-50	6-21, 35-43	22-34, 51-52
2026 Weeks		-	1-5, 44-50	6-21, 35-43	22-34, 51-52

Check-in day for weekly occupancy: Friday. Daily resort fee of \$17.92 plus tax applies.



### Grand Pacific Resorts at Coronado Beach Resort

1415 Orange Avenue, Coronado, California 92118, United States, **619-522-6000**

ACCOMMODATION	OCCUPANCY	LOW SEASON	MID SEASON	HIGH SEASON	PEAK SEASON
Studio	2/2	-	TIER 2	TIER 3	TIER 4
1 BDR	4/2	-	TIER 4	TIER 4	TIER 5
2 BDR	6/4	-	TIER 5	TIER 6	TIER 6
2025 Weeks		-	1-5, 44-50	6-21, 35-43	22-34, 51-52
2026 Weeks		-	1-5, 44-50	6-21, 35-43	22-34, 51-52

Check-in day for weekly occupancy: Sunday. Daily resort fee of \$27.50 plus tax applies.



### **M** Grand Pacific Resorts at RiverPointe Napa Valley

500 Lincoln Avenue, Napa, California 94558, United States, **707-252-4200**

ACCOMMODATION	OCCUPANCY	LOW SEASON	MID SEASON	HIGH SEASON	PEAK SEASON
1 BDR	4/2	-	TIER 3	TIER 3	TIER 4
<b>2025 Weeks</b>		-	1-8, 47-51	9-18, 43-46, 52	19-42
<b>2026 Weeks</b>		-	1-8, 47-51	9-18, 43-46, 52	19-42

Check-in day for weekly occupancy: Sunday. Daily resort fee of \$19.55 plus tax applies. Subject to change. A local/resort tax is charged by the resort. If arriving after 11pm, please contact the resort prior to arrival for late check-in instructions.



### **M** Hilton Grand Vacations Club Palm Desert

1 Willow Ridge, Palm Desert, California, 92260, United States, **760-674-1200**

ACCOMMODATION	OCCUPANCY	LOW SEASON	MID SEASON	HIGH SEASON	PEAK SEASON
Studio	2/2	TIER 2	TIER 2	TIER 3	TIER 4
1 BDR	2/4	TIER 3	TIER 3	TIER 4	TIER 6
1 BDR Terrace	2/4	TIER 3	TIER 4	TIER 5	TIER 6
1 BDR Premier Terrace	2/4	TIER 3	TIER 4	TIER 5	TIER 6
1 BDR Casita	2/4	TIER 5	TIER 5	TIER 6	TIER 6
2 BDR	4/6	TIER 3	TIER 4	TIER 5	TIER 6
2 BDR Casita	4/6	TIER 5	TIER 6	TIER 6	TIER 6
3 BDR Casita	6/8	TIER 6	TIER 6	TIER 6	TIER 6
5 BDR Casita	10/14	TIER 6	TIER 6	TIER 6	TIER 6
<b>2025 Weeks</b>		27-35	1-18, 25, 36-38	2-3, 7, 10-17, 26, 39-46, 48-49	4-6, 8-9, 47, 50-52
<b>2026 Weeks</b>		27-36	1-2, 19-25, 37-38	3-4, 8, 11-18, 26, 39-46, 48-50	5-7, 9-10, 47, 51-52

Check-in day for weekly occupancy: Any day.



### **M** Hilton Vacation Club Lake Tahoe Resort

901 Ski Run Boulevard, South Lake Tahoe, California 96150, United States, **530-541-6122**

ACCOMMODATION	OCCUPANCY	LOW SEASON	MID SEASON	HIGH SEASON	PEAK SEASON
Studio	2/2	TIER 1	TIER 2	TIER 2	TIER 2
Studio	4/4	TIER 1	TIER 2	TIER 2	TIER 2
1 BDR	4/2	TIER 3	TIER 3	TIER 4	TIER 5
2 BDR	6/4	TIER 4	TIER 5	TIER 6	TIER 6
2 BDR	8/6	TIER 4	TIER 5	TIER 6	TIER 6
<b>2025 Weeks</b>		17-20, 40-46	21-25, 32-39, 48-50	1-4, 26, 28-31	15-16, 27, 47, 51-52
<b>2026 Weeks</b>		17-20, 40-46	21-25, 32-39, 48-50	1-12, 15-16, 26, 28-31	13-14, 27, 47, 51-52

Check-in day for weekly occupancy: Any day.



### **M** Palm Canyon, a Hilton Vacation Club

2800 South Palm Canyon Drive, Palm Springs, California 92264, United States, **760-866-1800**

ACCOMMODATION	OCCUPANCY	LOW SEASON	MID SEASON	HIGH SEASON	PEAK SEASON
Junior Villa	2/2	-	TIER 3	TIER 4	TIER 4
Junior Villa	4/2	-	TIER 3	TIER 4	TIER 4
1 BDR	4/2	-	TIER 4	TIER 4	TIER 5
2 BDR (1 Bath)	6/4	-	TIER 4	TIER 5	TIER 6
3 BDR	10/6	-	TIER 6	TIER 6	TIER 6
<b>2025 Weeks</b>		-	21-46	8-20	1-7, 47-52
<b>2026 Weeks</b>		-	21-46	8-20	1-7, 47-52

Check-in day for weekly occupancy: Any day.



### **RVC's Cimarron Golf Resort Palm Springs**

67-707 30th Avenue, Cathedral City, California 92234, United States, **760-324-9911**

ACCOMMODATION	OCCUPANCY	LOW SEASON	MID SEASON	HIGH SEASON	PEAK SEASON
2 BDR	6/6	-	TIER 5	TIER 5	TIER 6
<b>2025 Weeks</b>		-	26-38, 47-50	1-3, 17-25, 39-46	4-16, 51-52
<b>2026 Weeks</b>		-	26-38, 47-50	1-3, 17-25, 39-46	4-16, 51-52

Check-in day for weekly occupancy: Friday/Saturday/Sunday.



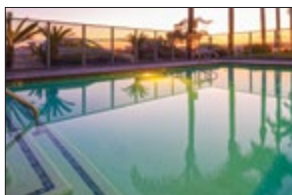


### **M** Riviera Beach, a Hilton Vacation Club

34630 Pacific Coast Highway, Capistrano Beach, California 92624, United States, **949-248-2944**

ACCOMMODATION	OCCUPANCY	LOW SEASON	MID SEASON	HIGH SEASON	PEAK SEASON
1 BDR Ocean View	4/2	-	-	TIER 4	TIER 4
1 BDR/2 BA Ocean View	4/4	-	-	TIER 4	TIER 5
2 BDR Non Ocean View	6/4	-	-	TIER 4	TIER 4
2 BDR Ocean View	6/4	-	-	TIER 5	TIER 5
<b>2025 Weeks</b>		-	-	1-6, 8-15, 17-22, 40-46, 48-50	7, 16, 23-39, 47, 51-52
<b>2026 Weeks</b>		-	-	1-6, 8-13, 15-22, 40-46, 48-50	7, 14, 23-39, 47, 51-52

Check-in day for weekly occupancy: Any day.



### **M** Riviera Shores, a Hilton Vacation Club

34630 Pacific Coast Highway, Capistrano Beach, California 92624, United States, **949-489-5555**

ACCOMMODATION	OCCUPANCY	LOW SEASON	MID SEASON	HIGH SEASON	PEAK SEASON
Deluxe Studio Ocean View	4/2	-	-	-	TIER 4
1 BDR Ocean View	4/2	-	-	-	TIER 4
2 BDR Non-Ocean View	6/4	-	-	-	TIER 5
<b>2025 Weeks</b>		-	-	-	1-52
<b>2026 Weeks</b>		-	-	-	1-52

Check-in day for weekly occupancy: Any day.



### **M** Riviera Oaks Resort & Racquet Club

25382 Pappas Road, Ramona, California 92065, United States, **760-788-7711**

ACCOMMODATION	OCCUPANCY	LOW SEASON	MID SEASON	HIGH SEASON	PEAK SEASON
1 BDR	4/4	-	-	TIER 4	TIER 4
2 BDR	6/4	-	-	TIER 4	TIER 5
<b>2025 Weeks</b>		-	-	1-6, 8-15, 17-22, 40-46, 48-50	7, 16, 23-39, 47, 51-52
<b>2026 Weeks</b>		-	-	1-6, 8-13, 15-22, 40-46, 48-50	7, 14, 23-39, 47, 51-52

Check-in day for weekly occupancy: Any day. No elevator.



### **M** San Luis Bay Inn, a Hilton Vacation Club

3254 Avila Beach Drive, Avila Beach, California 93424, United States, **805-595-2333**

ACCOMMODATION	OCCUPANCY	LOW SEASON	MID SEASON	HIGH SEASON	PEAK SEASON
Studio	4/2	-	TIER 1	TIER 2	TIER 3
1 BDR	4/2	-	TIER 3	TIER 3	TIER 4
2 BDR	6/4	-	TIER 4	TIER 5	TIER 6
<b>2025 Weeks</b>		-	1-6, 48-50	7-14, 17-26, 28-46	15-16, 27, 47, 51-52
<b>2026 Weeks</b>		-	1-6, 48-50	7-12, 15-26, 28-46	13-14, 27, 47, 51-52

Check-in day for weekly occupancy: Any day.



### Tahoe Beach and Ski Club

3601 Lake Tahoe Boulevard, South Lake Tahoe, California 96150, United States, **530-541-6220**

ACCOMMODATION	OCCUPANCY	LOW SEASON	MID SEASON	HIGH SEASON	PEAK SEASON
Studio	2/2	TIER 1	TIER 2	TIER 2	TIER 2
1 BDR	4/2	TIER 3	TIER 3	TIER 4	TIER 5
1 BDR Townhouse	4/2	TIER 3	TIER 3	TIER 4	TIER 5
1 BDR Deluxe	4/2	TIER 3	TIER 3	TIER 4	TIER 6
2 BDR	6/4	TIER 4	TIER 4	TIER 5	TIER 6
2 BDR Cabin	6/6	TIER 4	TIER 5	TIER 6	TIER 6
<b>2025 Weeks</b>		17-20, 40-46	21-25, 32-39, 48-50	1-14, 26, 28-31	15-16, 27, 47, 51-52
<b>2026 Weeks</b>		17-20, 40-46	21-25, 32-39, 48-50	1-12, 15-16, 26, 28-31	13-14, 27, 47, 51-52

Check-in day for weekly occupancy: Friday/Saturday.



### Tahoe Seasons, a Hilton Vacation Club

3901 Saddle Road, South Lake Tahoe, California 96150, United States, **530-541-6700**

ACCOMMODATION	OCCUPANCY	LOW SEASON	MID SEASON	HIGH SEASON	PEAK SEASON
Junior 1 BDR	4/2	-	-	TIER 3	TIER 3
1 BDR Sleeps 4	4/2	-	-	TIER 3	TIER 3
1 BDR Sleeps 6	6/2	-	-	TIER 4	TIER 4
2 BDR	8/4	-	-	TIER 4	TIER 5
2025 Weeks		-	-	14, 18-20, 38-46, 49-50	1-13, 15-17, 21-37, 47-48, 51-52
2026 Weeks		-	-	17-20, 38-46, 49-50	1-16, 21-37, 47-48, 51-52

Check-in day for weekly occupancy: Sunday.



### The Lodge at Lake Tahoe

3840 Pioneer Trail, South Lake Tahoe, California 96150, United States, **530-541-6226**

ACCOMMODATION	OCCUPANCY	LOW SEASON	MID SEASON	HIGH SEASON	PEAK SEASON
1 BDR	4/2	TIER 2	TIER 3	TIER 4	TIER 5
2025 Weeks		17-21, 44-46	22-23, 37-43, 47-49	1-3, 11-16, 35-36, 50	4-10, 24-34, 51-52
2026 Weeks		17-21, 44-46	22-23, 37-43, 47-49	1-3, 11-16, 35-36, 50	4-10, 24-34, 51-52

Check-in day for weekly occupancy: Friday/Saturday/Sunday. Limited availability. No air conditioning.

## FLORIDA



### M Alhambra Villas

500 Cypress Parkway, Kissimmee, Florida 34759, United States, **407-933-0700**

ACCOMMODATION	OCCUPANCY	LOW SEASON	MID SEASON	HIGH SEASON	PEAK SEASON
Efficiency	2/2	TIER 1	TIER 2	TIER 3	TIER 3
1 BDR	4/4	TIER 2	TIER 2	TIER 3	TIER 3
2 BDR Lockoff	6/6	TIER 3	TIER 3	TIER 5	TIER 6
2025 Weeks		1-4, 33-34, 36, 46, 48-50	5, 12-14, 18-20, 32, 37-45	7-11, 15, 17, 22-26, 28-31	6, 16, 21, 27, 35, 47, 51-52
2026 Weeks		1-4, 33-34, 36, 46, 48-50	5, 12, 15-16, 18-20, 32, 37-45	7-11, 13, 17, 22-26, 28-31	6, 14, 21, 27, 35, 47, 51-52

Check-in day for weekly occupancy: Any day.



### M Alhambra at Poinciana

500 East Cypress Parkway, Kissimmee, Florida 34759, United States, **407-933-0700**

ACCOMMODATION	OCCUPANCY	LOW SEASON	MID SEASON	HIGH SEASON	PEAK SEASON
Efficiency	2/2	TIER 1	TIER 2	TIER 3	TIER 3
1 BDR	4/4	TIER 2	TIER 2	TIER 3	TIER 3
2 BDR Lockoff	6/6	TIER 3	TIER 3	TIER 5	TIER 6
2025 Weeks		1-4, 33-34, 36, 46, 48-50	5, 12-14, 18-20, 32, 37-45	7-11, 15, 17, 22-26, 28-31	6, 16, 21, 27, 35, 47, 51-52
2026 Weeks		1-4, 33-34, 36, 46, 48-50	5, 12, 15-16, 18-20, 32, 37-45	7-11, 13, 17, 22-26, 28-31	6, 14, 21, 27, 35, 47, 51-52

Check-in day for weekly occupancy: Any day.



### M Aqua Sol, a Hilton Vacation Club

17777 Bali Boulevard, Winter Garden, Florida 34787, United States, **407-239-5000**

ACCOMMODATION	OCCUPANCY	LOW SEASON	MID SEASON	HIGH SEASON	PEAK SEASON
1 BDR Economy	4/2	-	TIER 2	TIER 2	TIER 3
1 BDR Standard	4/4	-	TIER 2	TIER 2	TIER 3
1 BDR Deluxe	4/4	-	TIER 2	TIER 3	TIER 4
2 BDR Economy	6/4	-	TIER 3	TIER 3	TIER 4
2 BDR Standard	6/6	-	TIER 3	TIER 4	TIER 4
2 BDR Deluxe	8/6	-	TIER 3	TIER 4	TIER 5
3 BDR	10/10	-	TIER 4	TIER 5	TIER 6
2025 Weeks		-	1-5, 18-22, 36-46, 49-50	6-7, 17, 23-25, 28-35, 47-48	8-16, 26-27, 51-52
2026 Weeks		-	1-5, 18-22, 36-46, 49-50	6-7, 17, 23-25, 28-35, 47-48	8-16, 26-27, 51-52

Check-in day for weekly occupancy: Any day.



### **M** Bryan's Spanish Cove

13875 State Road 535, Orlando, Florida 32821, United States, **407-239-4222**

ACCOMMODATION	OCCUPANCY	LOW SEASON	MID SEASON	HIGH SEASON	PEAK SEASON
2 BDR	6/4	-	TIER 3	TIER 3	TIER 4
<b>2025 Weeks</b>		-	1-5, 18-22, 36-46, 49-50	6-7, 17, 23-25, 28-35, 47-48	8-16, 26-27, 51-52
<b>2026 Weeks</b>		-	1-5, 18-22, 36-46, 49-50	6-7, 17, 23-25, 28-35, 47-48	8-16, 26-27, 51-52

Check-in day for weekly occupancy: Any day. No elevator.



### **M** Charter Club Naples Bay, a Hilton Vacation Club

1000 10th Avenue South, Naples, Florida 34102, United States, **239-261-5559**

ACCOMMODATION	OCCUPANCY	LOW SEASON	MID SEASON	HIGH SEASON	PEAK SEASON
2 BDR	6/4	TIER 2	TIER 3	TIER 4	TIER 5
<b>2025 Weeks</b>		37-39, 49-50	17-25, 40-48	26-36	1-16, 51-52
<b>2026 Weeks</b>		37-39, 49-50	17-25, 40-48	26-36	1-16, 51-52

Check-in day for weekly occupancy: Any day.



### **M** Club Regency of Marco Island

500 S. Collier Blvd., Marco Island, Florida 34145, United States, **239-394-8197**

ACCOMMODATION	OCCUPANCY	LOW SEASON	MID SEASON	HIGH SEASON	PEAK SEASON
2 BDR Pool View	4/4	-	TIER 2	TIER 3	TIER 4
2 BDR Beach View	4/4	-	TIER 3	TIER 4	TIER 5
<b>2025 Weeks</b>		-	31-50	1-2, 17-25, 27-30, 51-52	3-16, 26
<b>2026 Weeks</b>		-	31-50	1-2, 17-25, 27-30, 51-52	3-16, 26

Check-in day for weekly occupancy: Saturday



### **M** Crescent on South Beach, a Hilton Vacation Club

1420 Ocean Drive, Miami Beach, Florida 33139, United States, **305-531-5197**

ACCOMMODATION	OCCUPANCY	LOW SEASON	MID SEASON	HIGH SEASON	PEAK SEASON
1 BDR	4/4	TIER 2	TIER 3	TIER 3	TIER 4
1 BDR Deluxe	4/4	TIER 3	TIER 3	TIER 4	TIER 5
2 BDR	6/6	TIER 3	TIER 4	TIER 5	TIER 6
<b>2025 Weeks</b>		26, 28-40	18-25, 27, 41-46, 49-50	1-4, 17, 47-48, 51	5-16, 52
<b>2026 Weeks</b>		26, 28-40	18-25, 27, 41-46, 49-50	1-4, 17, 47-48, 51	5-16, 52

Check-in day for weekly occupancy: Any day.



### **M** Cypress Pointe, a Hilton Vacation Club

8651 Treasure Cay Lane, Orlando, Florida 32836, United States, **407-597-2700**

ACCOMMODATION	OCCUPANCY	LOW SEASON	MID SEASON	HIGH SEASON	PEAK SEASON
Studio	2/2	-	TIER 1	TIER 2	TIER 2
2 BDR	6/4	-	TIER 2	TIER 3	TIER 4
3 BDR	8/6	-	TIER 3	TIER 4	TIER 6
<b>2025 Weeks</b>		-	1-4, 37-46, 48-50	5-14, 17-26, 28-36	15-16, 27, 47, 51-52
<b>2026 Weeks</b>		-	1-4, 37-46, 48-50	5-12, 15-26, 28-36	13-14, 27, 47, 51-52

Check-in day for weekly occupancy: Any day. No elevator.



### **M** Daytona Beach Regency, a Hilton Vacation Club

400 North Atlantic Avenue, Daytona Beach, Florida 32118, United States, **386-255-0251**

ACCOMMODATION	OCCUPANCY	LOW SEASON	MID SEASON	HIGH SEASON	PEAK SEASON
Efficiency	2/2	TIER 1	TIER 2	TIER 2	TIER 2
1 BDR	4/2	TIER 2	TIER 3	TIER 3	TIER 4
1 BDR Premium	4/2	TIER 3	TIER 4	TIER 4	TIER 5
1 BDR Junior Suite	4/2	TIER 4	TIER 4	TIER 5	TIER 6
1 BDR Presidential Suite	4/2	TIER 4	TIER 5	TIER 6	TIER 6
2 BDR	6/4	TIER 3	TIER 4	TIER 4	TIER 5
<b>2025 Weeks</b>		1-4, 43-46, 48-50	18-19, 36-42	5, 7-9, 11-17, 20, 22, 47	6, 10, 21, 23-35, 51-52
<b>2026 Weeks</b>		1-4, 43-46, 48-50	18-19, 36-42	5, 7-9, 11-17, 20, 22, 47	6, 10, 21, 23-35, 51-52

Check-in day for weekly occupancy: Any day.





### **M** Grand Beach, a Hilton Vacation Club

8317 Lake Bryan Beach Boulevard, Orlando, Florida 32821, United States, **407-238-2500**

ACCOMMODATION	OCCUPANCY	LOW SEASON	MID SEASON	HIGH SEASON	PEAK SEASON
1 BDR Phase II	4/2	-	TIER 2	TIER 3	TIER 4
2 BDR Phase II	6/4	-	TIER 3	TIER 4	TIER 5
3 BDR - Phase I	8/6	-	TIER 5	TIER 6	TIER 6
3 BDR - Phase II	10/6	-	TIER 5	TIER 6	TIER 6
<b>2025 Weeks</b>		-	1-4, 37-46, 48-50	5-14, 17-26, 28-36	15-16, 27, 47, 51-52
<b>2026 Weeks</b>		-	1-4, 37-46, 48-50	5-12, 15-26, 28-36	13-14, 27, 47, 51-52

Check-in day for weekly occupancy: Any day.



### **M** Grande Villas, a Hilton Vacation Club

12118 Turtle Cay Circle, Orlando, Florida 32836, United States, **407-238-2300**

ACCOMMODATION	OCCUPANCY	LOW SEASON	MID SEASON	HIGH SEASON	PEAK SEASON
1 BDR	4/2	-	TIER 2	TIER 2	TIER 3
2 BDR	6/4	-	TIER 3	TIER 4	TIER 5
3 BDR	8/6	-	TIER 4	TIER 5	TIER 6
<b>2025 Weeks</b>		-	1-4, 37-46, 48-50	5-14, 17-26, 28-36	15-16, 27, 47, 51-52
<b>2026 Weeks</b>		-	1-4, 37-46, 48-50	5-12, 15-26, 28-36	13-14, 27, 47, 51-52

Check-in day for weekly occupancy: Any day.



### **M** Hilton Grand Vacations Club in Sandestin Golf and Beach Resort

8626 Baytowne Avenue, Miramar Beach, Florida 32550, United States **850-622-3400**

ACCOMMODATION	OCCUPANCY	LOW SEASON	MID SEASON	HIGH SEASON	PEAK SEASON
Studio	2/2	TIER 2	TIER 2	TIER 3	TIER 3
Studio Bayview	2/2	TIER 2	TIER 3	TIER 3	TIER 4
1 BDR 2 Bath Sunroom	2/4	TIER 2	TIER 4	TIER 4	TIER 5
1 BDR 2 Bath Sunroom Bay View	2/4	TIER 2	TIER 4	TIER 4	TIER 5
1 BDR	2/4	TIER 2	TIER 4	TIER 4	TIER 5
1 BDR Bay View	2/4	TIER 3	TIER 4	TIER 5	TIER 6
1 BDR 2 Bath	2/4	TIER 3	TIER 4	TIER 5	TIER 5
1 BDR 2 Bath Bay View	2/4	TIER 3	TIER 4	TIER 5	TIER 6
2 BDR	4/6	TIER 3	TIER 5	TIER 5	TIER 6
2 BDR Bay View	4/6	TIER 3	TIER 5	TIER 6	TIER 6
2 BDR Premier	4/6	TIER 4	TIER 6	TIER 6	TIER 6
<b>2025 Weeks</b>		1-5, 48-49	36-46, 50-52	6-7, 10-22, 29-35, 47	8-9, 23-28
<b>2026 Weeks</b>		1-6, 49	36-46, 48, 50-52	7-8, 11-23, 30-35, 47	9-10, 24-29

Check-in day for weekly occupancy: Any day.



### **M** Mystic Dunes, a Hilton Vacation Club

7600 Mystic Dunes Lane, Celebration, Florida 34747, United States, **407-396-1311**

ACCOMMODATION	OCCUPANCY	LOW SEASON	MID SEASON	HIGH SEASON	PEAK SEASON
1 BDR	4/2	-	TIER 2	TIER 2	TIER 3
1 BDR Standard	4/2	-	TIER 2	TIER 3	TIER 3
1 BDR Deluxe	4/2	-	TIER 3	TIER 3	TIER 4
2 BDR	8/4	-	TIER 4	TIER 5	TIER 6
2 BDR Lockoff	8/6	-	TIER 4	TIER 5	TIER 6
3 BDR Lockoff	12/6	-	TIER 6	TIER 6	TIER 6
<b>2025 Weeks</b>		-	1-4, 37-46, 48-50	5-14, 17-26, 28-36	15-16, 27, 47, 51-52
<b>2026 Weeks</b>		-	1-4, 37-46, 48-50	5-12, 15-26, 28-36	13-14, 27, 47, 51-52

Check-in day for weekly occupancy: Any day.



### **M** Orbit One Vacation Villas

2950 Entry Point Boulevard, Kissimmee, Florida 34747, United States, **407-396-0814**

ACCOMMODATION	OCCUPANCY	LOW SEASON	MID SEASON	HIGH SEASON	PEAK SEASON
2 BDR	6/4	-	TIER 3	TIER 3	TIER 4
<b>2025 Weeks</b>		-	1-5, 18-22, 36-46, 49-50	6-7, 17, 23-25, 28-35, 47-48	8-16, 26-27, 51-52
<b>2026 Weeks</b>		-	1-5, 18-22, 36-46, 49-50	6-7, 17, 23-25, 28-35, 47-48	8-16, 26-27, 51-52

Check-in day for weekly occupancy: Any day.



### **M Parkway International Resort**

6200 Safari Trail, Kissimmee, Florida 34747, United States, **407-396-6600**

ACCOMMODATION	OCCUPANCY	LOW SEASON	MID SEASON	HIGH SEASON	PEAK SEASON
2 BDR	6/4	-	TIER 3	TIER 3	TIER 4
<b>2025 Weeks</b>		-	1-5, 18-22, 36-46, 49-50	6-7, 17, 23-25, 28-35, 47-48	8-16, 26-27, 51-52
<b>2026 Weeks</b>		-	1-5, 18-22, 36-46, 49-50	6-7, 17, 23-25, 28-35, 47-48	8-16, 26-27, 51-52

Check-in day for weekly occupancy: Any day.



### **M Polynesian Isles, a Hilton Vacation Club**

3045 Polynesian Isles Boulevard, Kissimmee, Florida 34746, United States, **407-396-1622**

ACCOMMODATION	OCCUPANCY	LOW SEASON	MID SEASON	HIGH SEASON	PEAK SEASON
1 BDR Phase I	4/2	-	TIER 2	TIER 2	TIER 3
2 BDR	6/4	-	TIER 2	TIER 3	TIER 4
<b>2025 Weeks</b>		-	1-4, 37-46, 48-50	5-14, 17-26, 28-36	15-16, 27, 47, 51-52
<b>2026 Weeks</b>		-	1-4, 37-46, 48-50	5-12, 15-26, 28-36	13-14, 27, 47, 51-52

Check-in day for weekly occupancy: Any day.



### **M Plantation Beach Club at Indian River Plantation**

329 NE Tradewind Ln., Stuart, Florida 34996 United States, **772-225-0074**

ACCOMMODATION	OCCUPANCY	LOW SEASON	MID SEASON	HIGH SEASON	PEAK SEASON
1 BDR	2/2	-	TIER 2	TIER 3	TIER 4
2 BDR	4/6	-	TIER 3	TIER 4	TIER 5
<b>2025 Weeks</b>		-	31-50	1-2, 17-25, 27-30, 51-52	3-16, 26
<b>2026 Weeks</b>		-	31-50	1-2, 17-25, 27-30, 51-52	3-16, 26

Check-in day for weekly occupancy: Saturday



### **M The Cove on Ormond Beach, a Hilton Vacation Club**

145 South Atlantic Avenue, Ormond Beach, Florida 32176, United States, **386-677-1446**

ACCOMMODATION	OCCUPANCY	LOW SEASON	MID SEASON	HIGH SEASON	PEAK SEASON
Studio North Tower	4/2	TIER 1	TIER 1	TIER 2	TIER 2
Studio South Tower	2/2	TIER 1	TIER 2	TIER 2	TIER 2
1 BDR North Tower	4/4	TIER 1	TIER 2	TIER 2	TIER 3
1 BDR South Tower	4/4	TIER 2	TIER 2	TIER 3	TIER 3
2 BDR North Tower	6/6	TIER 2	TIER 3	TIER 3	TIER 4
2 BDR South Tower	6/6	TIER 2	TIER 3	TIER 4	TIER 5
2 BDR Lockoff South Tower	6/6	TIER 2	TIER 3	TIER 4	TIER 5
<b>2025 Weeks</b>		1-4, 37-40, 43-45, 49-50	18-23, 35-36, 46-48	14, 24-25, 28-34, 41-42	5-13, 15-17, 26-27, 51-52
<b>2026 Weeks</b>		1-4, 37-40, 43-45, 49-50	18-23, 35-36, 46-48	17, 24-25, 28-34, 41-42	5-16, 26-27, 51-52

Check-in day for weekly occupancy: Any day.

## HAWAII



### **Grand Pacific Resorts at Hanalei Bay Resort**

5380 Honoiki Road, Princeville, Kauai, Hawaii 96722, United States, **808-826-6522**

ACCOMMODATION	OCCUPANCY	LOW SEASON	MID SEASON	HIGH SEASON	PEAK SEASON
1 BDR	4/2	-	-	TIER 5	TIER 6
2 BDR	6/4	-	-	TIER 6	TIER 6
<b>2025 Weeks</b>		-	-	1-2, 17-22, 33-50	3-16, 23-32, 51-52
<b>2026 Weeks</b>		-	-	1-2, 17-22, 33-50	3-16, 23-32, 51-52

Check-in day for weekly occupancy: Saturday. \$20.94 Night resort fee tax applies. 1 Bedroom \$31.99 nightly tax. 2 Bedroom \$35.17 nightly tax. \$8+tax/day and \$25 check-in fee may apply.



## Grand Pacific Resorts at Makai Club Resort

4180 Lei O Papa Road, Princeville, Kauai, Hawaii 96722, United States, **808-826-8815**

ACCOMMODATION	OCCUPANCY	LOW SEASON	MID SEASON	HIGH SEASON	PEAK SEASON
1 BDR	4/2	-	-	TIER 4	TIER 5
2 BDR	6/4	-	-	TIER 5	TIER 6
2025 Weeks		-	-	1-2, 17-22, 33-50	3-16, 23-32, 51-52
2026 Weeks		-	-	1-2, 17-22, 33-50	3-16, 23-32, 51-52

Check-in day for weekly occupancy: Friday (1 BDR) and Sunday (2 BDR). Daily resort fee of \$15.71/Night plus tax plus tax applies. 1 BDR \$11.45 nightly tax. 2 BDR \$12.46 nightly tax.



## Hilton Vacation Club Ka'anapali Beach

104 Ka'anapali Shores Place, Maui, Hawaii 96761, United States, **808-661-2000**

ACCOMMODATION	OCCUPANCY	LOW SEASON	MID SEASON	HIGH SEASON	PEAK SEASON
1 BDR Scenic View	4/2	-	-	TIER 4	TIER 5
1 BDR Ocean View	4/2	-	-	TIER 5	TIER 6
1 BDR Deluxe Ocean View	4/2	-	-	TIER 6	TIER 6
2 BDR	6/4	-	-	TIER 6	TIER 6
2 BDR Presidential Suite	6/4	-	-	TIER 6	TIER 6
2025 Weeks		-	-	1-14, 17-26, 28-46, 48-50	15-16, 27, 47, 51-52
2026 Weeks		-	-	1-12, 15-26, 28-46, 48-50	13-14, 27, 47, 51-52

Check-in day for weekly occupancy: Any day.



## Imperial Hawaii Vacation Club

205 Lewers Street, Honolulu, Oahu, Hawaii 96815, United States, **808-923-1827**

ACCOMMODATION	OCCUPANCY	LOW SEASON	MID SEASON	HIGH SEASON	PEAK SEASON
1 BDR	4/2	-	-	TIER 5	TIER 6
2025 Weeks		-	-	1-2, 17-22, 33-50	3-16, 23-32, 51-52
2026 Weeks		-	-	1-2, 17-22, 33-50	3-16, 23-32, 51-52

Check-in day for weekly occupancy: Saturday.



## Kapaa Shore

4-0900 Kuhio Highway, Kapa, Kauai, Hawaii 96746, United States, **808-822-3055**

ACCOMMODATION	OCCUPANCY	LOW SEASON	MID SEASON	HIGH SEASON	PEAK SEASON
1 BDR	4/2	-	-	TIER 3	TIER 4
2025 Weeks		-	-	1-2, 17-22, 33-50	3-16, 23-32, 51-52
2026 Weeks		-	-	1-2, 17-22, 33-50	3-16, 23-32, 51-52

Check-in day for weekly occupancy: Saturday. No elevator. No air conditioning.



## Ke Nani Kai

50 Kepuhi Place, Kaluakoi Resort, Molokai, Hawaii 96770, United States, **858-679-2016**

ACCOMMODATION	OCCUPANCY	LOW SEASON	MID SEASON	HIGH SEASON	PEAK SEASON
1 BDR	4/2	-	-	TIER 4	TIER 5
2 BDR	6/4	-	-	TIER 5	TIER 6
2025 Weeks		-	-	1-2, 17-22, 33-50	3-16, 23-32, 51-52
2026 Weeks		-	-	1-2, 17-22, 33-50	3-16, 23-32, 51-52

Check-in day for weekly occupancy: Saturday.



## Lawai Beach Resort

5017 Lawai Road, Koloa, Kauai, Hawaii 96756, United States, **808-240-5100**

ACCOMMODATION	OCCUPANCY	LOW SEASON	MID SEASON	HIGH SEASON	PEAK SEASON
1 BDR	4/2	-	-	TIER 4	TIER 5
2 BDR	6/4	-	-	TIER 5	TIER 6
2025 Weeks		-	-	1-2, 17-22, 33-50	3-16, 23-32, 51-52
2026 Weeks		-	-	1-2, 17-22, 33-50	3-16, 23-32, 51-52

Check-in day for weekly occupancy: Friday. No air conditioning.





## Royal Kuhio

2240 Kuhio Avenue, Honolulu, Oahu, Hawaii 96815, United States, **808-923-1856**

ACCOMMODATION	OCCUPANCY	LOW SEASON	MID SEASON	HIGH SEASON	PEAK SEASON
1 BDR	4/2	-	-	TIER 3	TIER 4
2025 Weeks		-	-	1-2, 17-22, 33-50	3-16, 23-32, 51-52
2026 Weeks		-	-	1-2, 17-22, 33-50	3-16, 23-32, 51-52

Check-in day for weekly occupancy: Friday/Saturday/Sunday.



## RVC at Kona Reef Resort

75-5888 Alii Drive, Kailua, Kona, Hawaii 96740, United States, **808-331-2925**

ACCOMMODATION	OCCUPANCY	LOW SEASON	MID SEASON	HIGH SEASON	PEAK SEASON
1 BDR	4/2	-	-	TIER 3	TIER 4
2025 Weeks		-	-	1-2, 17-22, 33-50	3-16, 23-32, 51-52
2026 Weeks		-	-	1-2, 17-22, 33-50	3-16, 23-32, 51-52

Check-in day for weekly occupancy: Saturday. Daily resort fee of \$8.12/Night plus tax applies. \$4.50/day utility fee.



## Sea Mountain

Colony I at Sea Mountain, 95-788 Ninole Loop Road, Punalu'u, Kona, Hawaii 96777, United States, **808-928-6200**

ACCOMMODATION	OCCUPANCY	LOW SEASON	MID SEASON	HIGH SEASON	PEAK SEASON
Studio	4/2	-	-	TIER 3	TIER 4
1 BDR	4/2	-	-	TIER 3	TIER 4
2025 Weeks		-	-	1-2, 17-22, 33-50	3-16, 23-32, 51-52
2026 Weeks		-	-	1-2, 17-22, 33-50	3-16, 23-32, 51-52

Check-in day for weekly occupancy: Friday/Saturday. No elevator. No air conditioning.



## Sea Village

75-5992 Alii Drive, Kailua, Kona, Hawaii 96740, United States, **808-326-2252**

ACCOMMODATION	OCCUPANCY	LOW SEASON	MID SEASON	HIGH SEASON	PEAK SEASON
1 BDR	4/2	-	-	TIER 3	TIER 4
2 BDR	6/4	-	-	TIER 4	TIER 5
2025 Weeks		-	-	1-2, 17-22, 33-50	3-16, 23-32, 51-52
2026 Weeks		-	-	1-2, 17-22, 33-50	3-16, 23-32, 51-52

Check-in day for weekly occupancy: Saturday. No air conditioning.

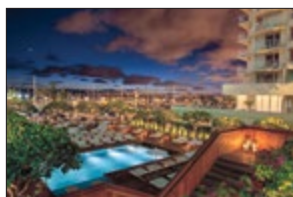


## The Bay Club, a Hilton Grand Vacations Club

69-450 Waikoloa Beach Drive, Waikoloa, Hawaii 96738, United States, **808-886-8700**

ACCOMMODATION	OCCUPANCY	LOW SEASON	MID SEASON	HIGH SEASON	PEAK SEASON
1 BR	4/2	-	-	TIER 3	TIER 4
2 BR	6/4	-	-	TIER 4	TIER 6
2 BR Plus	6/4	-	-	TIER 5	TIER 6
2025 Weeks		-	-	19-22, 36-41	1-18, 23-35, 42-52
2026 Weeks		-	-	19-22, 36-41	1-18, 23-35, 42-52

Check in for weekly occupancy: Thursday/Friday/Saturday/Sunday. No elevator access for 2BR Plus accommodation.



### **M** The Modern, a Hilton Vacation Club

1775 Ala Moana Boulevard, Honolulu, Oahu, Hawaii 96815, United States, **808-943-5800**

ACCOMMODATION	OCCUPANCY	LOW SEASON	MID SEASON	HIGH SEASON	PEAK SEASON
Hotel Room Std City/Scenic View	2/2-4/2	TIER 2	TIER 3	TIER 3	TIER 4
Hotel Room Enh City/Scenic View	2/2-4/2	TIER 3	TIER 3	TIER 4	TIER 5
Hotel Room Std Part Ocean/Marina Vw	2/2-4/2	TIER 4	TIER 5	TIER 6	TIER 6
Hotel Room Studio Std w/Terrace	4/2	TIER 4	TIER 5	TIER 6	TIER 6
Hotel Room Enh Part Ocean/Marina Vw	2/2-4/2	TIER 5	TIER 5	TIER 6	TIER 6
Hotel Room Studio Enh w/Terrace	4/2	TIER 5	TIER 5	TIER 6	TIER 6
Studio Partial Ocean/Marina View	4/2	TIER 5	TIER 6	TIER 6	TIER 6
1 BDR Enhanced	4/4	TIER 6	TIER 6	TIER 6	TIER 6
1 BDR Standard	2/2	TIER 6	TIER 6	TIER 6	TIER 6
1 BDR/2 BA Enh Partial Ocean View	4/4	TIER 6	TIER 6	TIER 6	TIER 6
1 BDR Std Ocean/Marina View	2/2	TIER 6	TIER 6	TIER 6	TIER 6
1 BDR Enh Partial Ocean/Marina View	4/4	TIER 6	TIER 6	TIER 6	TIER 6
1 BDR Enh Ocean/Marina View	2/2	TIER 6	TIER 6	TIER 6	TIER 6
2 BDR Premium Enh Partial Ocean View	6/6	TIER 6	TIER 6	TIER 6	TIER 6
Hotel Room Enh Penthouse	4/4	TIER 6	TIER 6	TIER 6	TIER 6
<b>2025 Weeks</b>		18-22	15, 34, 36-40	1-6, 8-14, 17, 23-26, 28-29, 41-46, 48-50	7, 16, 27, 30-33, 35, 47, 51-52
<b>2026 Weeks</b>		18-22	13, 34, 36-40	1-6, 8-12, 15-17, 23-26, 28-29, 41-46, 48-50	7, 14, 27, 30-33, 35, 47, 51-52

Check-in day for weekly occupancy: Any day.



### The Point at Poipu, a Hilton Vacation Club

1613 Pe'e Road, Koloa, Kauai, Hawaii 96756, United States, **808-742-1888**

ACCOMMODATION	OCCUPANCY	LOW SEASON	MID SEASON	HIGH SEASON	PEAK SEASON
2 BDR Garden View	6/4	-	-	TIER 5	TIER 6
2 BDR Partial Ocean View	6/4	-	-	TIER 5	TIER 6
2 BDR Ocean View	6/4	-	-	TIER 6	TIER 6
2 BDR Ocean Front	6/4	-	-	TIER 6	TIER 6
3 BDR Presidential Suite	8/6	-	-	TIER 6	TIER 6
<b>2025 Weeks</b>		-	-	1-14, 17-26, 28-46, 48-50	15-16, 27, 47, 51-52
<b>2026 Weeks</b>		-	-	1-12, 15-26, 28-46, 48-50	13-14, 27, 47, 51-52

Check-in day for weekly occupancy: Any day.



### Valley Isle

4327 Lower Honoapiilani Road, Lahaina, Maui, Hawaii 96761, United States, **808-669-4841**

ACCOMMODATION	OCCUPANCY	LOW SEASON	MID SEASON	HIGH SEASON	PEAK SEASON
1 BDR	4/2	-	-	TIER 3	TIER 4
<b>2025 Weeks</b>		-	-	1-2, 17-22, 33-50	3-16, 23-32, 51-52
<b>2026 Weeks</b>		-	-	1-2, 17-22, 33-50	3-16, 23-32, 51-52

Check-in day for weekly occupancy: Saturday. No air conditioning.

## INDIANA



### **M** Varsity Club South Bend, a Hilton Vacation Club

3800 North Main Street, Mishawaka, Indiana 46545, United States, **574-277-0500**

ACCOMMODATION	OCCUPANCY	LOW SEASON	MID SEASON	HIGH SEASON	PEAK SEASON
Studio	4/2	-	TIER 2	TIER 2	TIER 2
1 BDR	4/2	-	TIER 2	TIER 3	TIER 3
1 BDR Deluxe	4/2	-	TIER 2	TIER 3	TIER 4
2 BDR	6/4	-	TIER 3	TIER 4	TIER 4
2 BDR Deluxe	6/6	-	TIER 3	TIER 4	TIER 5
The Alumni House	6/4	-	TIER 6	TIER 6	TIER 6
<b>2025 Weeks</b>		-	1-6, 9-14, 44-50	7-8, 15-23, 34-43	24-33, 51-52
<b>2026 Weeks</b>		-	1-6, 9-12, 15-16, 44-50	7-8, 13-14, 17-23, 34-43	24-33, 51-52

Check-in day for weekly occupancy: Any day.

## MARYLAND

**Coconut Malorie**200 59th Street on the Bay, Ocean City, Maryland 21842, United States, **800-767-6060**

ACCOMMODATION	OCCUPANCY	LOW SEASON	MID SEASON	HIGH SEASON	PEAK SEASON
1 BDR	4/2	TIER 1	TIER 2	TIER 2	TIER 3
1 BDR	4/2	TIER 1	TIER 2	TIER 2	TIER 3
2025 Weeks		1-10, 44-52	11-16, 41-43	17-21, 36-40	22-35
2026 Weeks		1-10, 44-52	11-16, 41-43	17-21, 36-40	22-35

Check-in day for weekly occupancy: Friday.

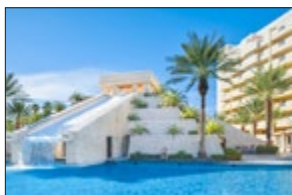
## MISSOURI

**M The Suites at Fall Creek**1 Fall Creek Drive, Branson, Missouri 65616, United States, **417-336-3611**

ACCOMMODATION	OCCUPANCY	LOW SEASON	MID SEASON	HIGH SEASON	PEAK SEASON
Studio	2/2	TIER 1	TIER 2	TIER 2	TIER 3
1 Bedroom	4/4	TIER 2	TIER 2	TIER 3	TIER 3
2 Bedroom	6/6	TIER 2	TIER 3	TIER 3	TIER 4
2 Bedroom Deluxe	6/6	TIER 3	TIER 3	TIER 4	TIER 6
2025 Weeks		1-8	9-14, 48-50	17-26, 28-46	15-16, 27, 47, 51-52
2026 Weeks		1-8	9-12, 15-16, 48-50	17-26, 28-46	13-14, 27, 47, 51-52

Check-in day for weekly occupancy: Any day.

## NEVADA

**M Cancun Las Vegas, a Hilton Vacation Club**8335 Las Vegas Boulevard South, Las Vegas, Nevada 89123, United States, **702-614-6200**

ACCOMMODATION	OCCUPANCY	LOW SEASON	MID SEASON	HIGH SEASON	PEAK SEASON
1 BDR	4/4	-	-	-	TIER 4
2 BDR	6/4	-	-	-	TIER 5
Penthouse Villa	6/4	-	-	-	TIER 6
2025 Weeks		-	-	-	1-52
2026 Weeks		-	-	-	1-52

Check-in day for weekly occupancy: Any day.

**M Desert Retreat, a Hilton Vacation Club**5165 South Decatur Boulevard, Las Vegas, Nevada 89118, United States, **702-579-3600**

ACCOMMODATION	OCCUPANCY	LOW SEASON	MID SEASON	HIGH SEASON	PEAK SEASON
1 BDR	4/2	TIER 2	TIER 3	TIER 4	TIER 5
2 BDR	6/4	TIER 3	TIER 4	TIER 5	TIER 5
2025 Weeks		45-46, 49-50	3-8	23-34, 36, 48	1-2, 9-22, 35, 37-44, 47, 51-52
2026 Weeks		45-46, 49-50	3-8	23-34, 36, 48	1-2, 9-22, 35, 37-44, 47, 51-52

Check-in day for weekly occupancy: Any day.

**Kingsbury of Tahoe**335 Tramway Drive, Stateline, Nevada 89449, United States, **775-588-4749**

ACCOMMODATION	OCCUPANCY	LOW SEASON	MID SEASON	HIGH SEASON	PEAK SEASON
2 BDR	6/4	TIER 3	TIER 4	TIER 5	TIER 6
2025 Weeks		17-21, 44-46	22-23, 37-43, 47-49	1-3, 11-16, 35-36, 50	4-10, 24-34, 51-52
2026 Weeks		17-21, 44-46	22-23, 37-43, 47-49	1-3, 11-16, 35-36, 50	4-10, 24-34, 51-52

Check-in day for weekly occupancy: Saturday. No air conditioning.





### **M** Polo Towers, a Hilton Vacation Club

3745 Las Vegas Boulevard South, Las Vegas, Nevada 89109, United States, **702-261-1000**

ACCOMMODATION	OCCUPANCY	LOW SEASON	MID SEASON	HIGH SEASON	PEAK SEASON
Studio Ste Efficiency	2/2	-	-	TIER 3	TIER 4
1 BDR Ste	4/4	-	-	TIER 5	TIER 6
2 BDR Ste	6/6	-	-	TIER 6	TIER 6
Studio Villa Efficiency	2/2	-	-	TIER 4	TIER 5
1 BDR Villa	4/4	-	-	TIER 6	TIER 6
2 BDR Villa	6/6	-	-	TIER 6	TIER 6
<b>2025 Weeks</b>				1-14, 17-26, 28-46, 48-51	15-16, 27, 47, 52
<b>2026 Weeks</b>				1-12, 15-26, 28-46, 48-51	13-14, 27, 47, 52

Check-in day for weekly occupancy: Any day.



### The Carriage House

105 East Harmon Avenue, Las Vegas, Nevada 89109, United States, **702-798-1020**

ACCOMMODATION	OCCUPANCY	LOW SEASON	MID SEASON	HIGH SEASON	PEAK SEASON
Studio	2/2	-	-	TIER 2	TIER 2
1 BDR	4/2	-	-	TIER 3	TIER 3
<b>2025 Weeks</b>		-	-	1-14, 17-26, 28-46, 48-51	15-16, 27, 47, 52
<b>2026 Weeks</b>		-	-	1-12, 15-26, 28-46, 48-51	13-14, 27, 47, 52

Check-in day for weekly occupancy: Friday/Saturday/Sunday. The entry doors are locked 24/7; press the call button, and the staff will open the door and proceed with check-in as the resort is staffed 24/7.



### The Ridge Pointe

455 Tramway Drive, Stateline, Nevada 89449, United States, **775-588-3553**

ACCOMMODATION	OCCUPANCY	LOW SEASON	MID SEASON	HIGH SEASON	PEAK SEASON
Studio	2/2	TIER 2	TIER 3	TIER 3	TIER 4
1 BDR	4/2	TIER 2	TIER 3	TIER 4	TIER 5
2 BDR	6/4	TIER 3	TIER 4	TIER 5	TIER 6
<b>2025 Weeks</b>		17-20, 40-46	21-25, 32-39, 48-50	1-14, 26, 28-31	15-16, 27, 47, 51-52
<b>2026 Weeks</b>		17-20, 40-46	21-25, 32-39, 48-50	1-12, 15-16, 26, 28-31	13-14, 27, 47, 51-52

Check-in day for weekly occupancy: Friday/Saturday.

## NEW MEXICO



### **M** Villas de Santa Fe, a Hilton Vacation Club

400 Griffin Street, Santa Fe, New Mexico 87501, United States, **505-988-3000**

ACCOMMODATION	OCCUPANCY	LOW SEASON	MID SEASON	HIGH SEASON	PEAK SEASON
1 BDR	4/2	-	TIER 2	TIER 3	TIER 4
1 BDR Deluxe	4/2	-	TIER 3	TIER 3	TIER 4
2 BDR	8/4	-	TIER 3	TIER 4	TIER 5
<b>2025 Weeks</b>		-	1-6, 48-50	7-14, 17-26, 28-46	15-16, 27, 47, 51-52
<b>2026 Weeks</b>		-	1-6, 48-50	7-12, 15-26, 28-46	13-14, 27, 47, 51-52

Check-in day for weekly occupancy: Any day.

## NORTH CAROLINA



### Atlantic Beach Resort

715 West Fort Macon Road, Atlantic Beach, North Carolina 28512, United States, **252-247-5841**

ACCOMMODATION	OCCUPANCY	LOW SEASON	MID SEASON	HIGH SEASON	PEAK SEASON
1 BDR	4/2	TIER 2	TIER 3	TIER 3	TIER 4
2 BDR	6/4	TIER 3	TIER 3	TIER 4	TIER 5
<b>2025 Weeks</b>		1-7, 44-52	8-12, 41-43	13-20, 35-40	21-34
<b>2026 Weeks</b>		1-7, 44-52	8-12, 41-43	13-20, 35-40	21-34

Check-in day for weekly occupancy: Saturday. Two weeks prior to arrival, please call the resort at 252-247-5841, then dial 0 for the Front Desk. This is to confirm your arrival. At that time, the resort can answer any of their questions and we give them some general information (such as check in time, etc.). This is to make sure guests will be using their units and to answer any of their questions.



### **M** Beachwoods, a Hilton Vacation Club

1 Cypress Knee Trail, Kitty Hawk, North Carolina 27949, United States, **252-261-4610**

ACCOMMODATION	OCCUPANCY	LOW SEASON	MID SEASON	HIGH SEASON	PEAK SEASON
1 BDR	4/2	TIER 1	TIER 2	TIER 3	TIER 3
2 BDR 1 BDR with Open Loft	6/4	TIER 2	TIER 3	TIER 5	TIER 6
2 BDR Lockoff	8/4	TIER 2	TIER 3	TIER 5	TIER 6
3 BDR	8/6	TIER 2	TIER 5	TIER 6	TIER 6
3 BDR 2 BDR with Open Loft	10/6	TIER 3	TIER 5	TIER 6	TIER 6
4 BDR 3 BDR with Open Loft	10/8	TIER 3	TIER 6	TIER 6	TIER 6
<b>2025 Weeks</b>		1-11, 48-50	12-19, 44-46, 51-52	20-25, 35-43, 47	26-34
<b>2026 Weeks</b>		1-11, 48-50	12-19, 44-46, 51-52	20-25, 35-43, 47	26-34

Check-in day for weekly occupancy: Any day.



### **M** Fairway Forest Resort

3077 US Highway 64 E, Suite A, Sapphire, North Carolina 28774, United States, **828-743-3956**

ACCOMMODATION	OCCUPANCY	LOW SEASON	MID SEASON	HIGH SEASON	PEAK SEASON
1 BDR Standard	2/2	-	TIER 2	TIER 2	TIER 3
1 BDR Deluxe	4/2	-	TIER 2	TIER 3	TIER 3
2 BDR Standard	6/4	-	TIER 3	TIER 4	TIER 5
2 BDR Lockoff	6/4	-	TIER 3	TIER 4	TIER 6
<b>2025 Weeks</b>		-	4-11, 46-50	1-3, 12-17, 44-45	18-43, 51-52
<b>2026 Weeks</b>		-	4-11, 46-50	1-3, 12-17, 44-45	18-43, 51-52

Check-in day for weekly occupancy: Any day.

## SOUTH CAROLINA

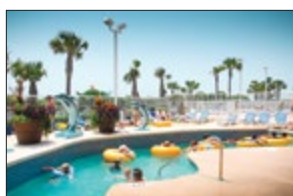


### Church Street Inn

177 Church Street, Charleston, South Carolina 29401, United States, **843-722-3420**

ACCOMMODATION	OCCUPANCY	LOW SEASON	MID SEASON	HIGH SEASON	PEAK SEASON
1 BDR	4/2	-	TIER 2	TIER 3	TIER 4
<b>2025 Weeks</b>		-	1-12, 41-52	13-20, 35-40	21-34
<b>2026 Weeks</b>		-	1-12, 41-52	13-20, 35-40	21-34

Check in day for weekly occupancy: Sunday.



### Dunes Village Resort

5200 North Ocean Boulevard, Myrtle Beach, South Carolina 29577, United States, **843-449-5275**

ACCOMMODATION	OCCUPANCY	LOW SEASON	MID SEASON	HIGH SEASON	PEAK SEASON
Double Studio Oceanfront Dlx	4/2	TIER 2	TIER 2	TIER 3	TIER 4
1 BDR Angle Oceanfront Queen Suite	8/2	TIER 2	TIER 3	TIER 3	TIER 4
2 BDR Angle Oceanfront Dlx	8/4	TIER 3	TIER 3	TIER 4	TIER 5
2 BDR Condo Oceanfront Dlx	8/4	TIER 3	TIER 4	TIER 5	TIER 6
3 BDR Angle Oceanfront Dlx	10/6	TIER 3	TIER 4	TIER 6	TIER 6
3 BDR Condo Oceanfront	12/6	TIER 4	TIER 5	TIER 6	TIER 6
4 BDR Condo Oceanfront	12/8	TIER 5	TIER 6	TIER 6	TIER 6
<b>2025 Weeks</b>		1-6, 46, 49-52	7-12, 17, 40-45, 47-48	13-16, 18-20, 22, 34, 36-39	21, 23-33, 35
<b>2026 Weeks</b>		1-6, 46, 49-52	7-12, 17, 40-45, 47-48	13-16, 18-20, 22, 34, 36-39	21, 23-33, 35

Check-in day for weekly occupancy: Friday.



### Island Links Resort

1 Coggin Point Road, Hilton Head Island, South Carolina 29928, United States, **843-681-3582**

ACCOMMODATION	OCCUPANCY	LOW SEASON	MID SEASON	HIGH SEASON	PEAK SEASON
2 BDR	6/4	TIER 3	TIER 4	TIER 5	TIER 6
<b>2025 Weeks</b>		1-4, 49-50	5-11, 17, 45-48	13-14, 18-20, 36-44	12, 15-16, 21-35, 51-52
<b>2026 Weeks</b>		1-4, 49-50	5-11, 17, 45-48	15-16, 18-20, 36-44	12-14, 21-35, 51-52

Check-in day for weekly occupancy: Any day.



## Ocean Club Resort

1908 North Ocean Boulevard, North Myrtle Beach, South Carolina 29582, United States, **843-249-1421**

ACCOMMODATION	OCCUPANCY	LOW SEASON	MID SEASON	HIGH SEASON	PEAK SEASON
1 BDR	4/2	TIER 2	TIER 3	TIER 3	TIER 4
2 BDR	6/4	TIER 2	TIER 3	TIER 3	TIER 4
2025 Weeks		1-7, 44-52	8-12, 41-43	13-20, 35-40	21-34
2026 Weeks		1-7, 44-52	8-12, 41-43	13-20, 35-40	21-34

Check-in day for weekly occupancy: Saturday.



## Royal Dunes Resort

8 Wimbledon Court, Hilton Head Island, South Carolina 29928, United States, **843-681-9718**

ACCOMMODATION	OCCUPANCY	LOW SEASON	MID SEASON	HIGH SEASON	PEAK SEASON
3 BDR	8/6	TIER 2	TIER 4	TIER 5	TIER 6
2025 Weeks		1-8, 48-50	9-14, 17-20, 36-46	21-26, 28-35	15-16, 27, 47, 51-52
2026 Weeks		1-8, 48-50	9-12, 15-20, 36-46	21-26, 28-35	13-14, 27, 47, 51-52

Check-in day for weekly occupancy: Any day.



## Sandpebble Beach Club

1011 South Ocean Boulevard, Surfside Beach, South Carolina 29575, United States, **843-232-0565**

ACCOMMODATION	OCCUPANCY	LOW SEASON	MID SEASON	HIGH SEASON	PEAK SEASON
2 BDR	6/4	TIER 1	TIER 2	TIER 3	TIER 3
2025 Weeks		1-7, 44-52	8-12, 41-43	13-20, 35-40	21-34
2026 Weeks		1-7, 44-52	8-12, 41-43	13-20, 35-40	21-34

Check-in day for weekly occupancy: Saturday. Front Desk open 8am-6pm. Check-in arriving after hours should contact the front desk prior to arrival for instructions. Resort has strict policy of 2 cars per unit.



## Sea Mystique

410 North Waccamaw Drive, Murrells Inlet, South Carolina 29576, United States, **843-232-0565**

ACCOMMODATION	OCCUPANCY	LOW SEASON	MID SEASON	HIGH SEASON	PEAK SEASON
2 BDR	6/4	TIER 1	TIER 2	TIER 3	TIER 3
2025 Weeks		1-7, 44-52	8-12, 41-43	13-20, 35-40	21-34
2026 Weeks		1-7, 44-52	8-12, 41-43	13-20, 35-40	21-34

Check-in day for weekly occupancy: Saturday. Check-in located at off-site address at Sandpebble Beach Resort: 1011 South Ocean Blvd, Surfside Beach, SC 29575. Late arrivals must contact the resort prior to check-in for arrival instructions. Resort has a strict policy of one (1) car per unit.

## TENNESSEE



## **M** Bent Creek Golf Village, a Hilton Vacation Club

3919 East Parkway, Gatlinburg, Tennessee 37738, United States, **865-436-2875**

ACCOMMODATION	OCCUPANCY	LOW SEASON	MID SEASON	HIGH SEASON	PEAK SEASON
1 BDR	4/4	TIER 2	TIER 2	TIER 3	TIER 3
2 BDR	8/8	TIER 2	TIER 3	TIER 3	TIER 4
2 BDR Cabin	6/6	TIER 2	TIER 3	TIER 4	TIER 5
2025 Weeks		1-11, 17, 44-46, 48-50	12-14, 18-20, 37-43	21-26, 28-36	15-16, 27, 47, 51-52
2026 Weeks		1-11, 17, 44-46, 48-50	12, 15-16, 18-20, 37-43	21-26, 28-36	13-14, 27, 47, 51-52

Check-in day for weekly occupancy: Any day.





### **M Sunrise Ridge Resort**

2301 Ridge Road, Pigeon Forge, Tennessee 37863, United States, **865-908-6040**

ACCOMMODATION	OCCUPANCY	LOW SEASON	MID SEASON	HIGH SEASON	PEAK SEASON
1 BDR Standard	4/2	TIER 1	TIER 2	TIER 3	TIER 3
1 BDR Standard-Mountain View	4/2	TIER 1	TIER 2	TIER 3	TIER 4
1 BDR Deluxe	4/2	TIER 1	TIER 2	TIER 3	TIER 4
1 BDR Deluxe-Mountain View	4/2	TIER 1	TIER 2	TIER 3	TIER 5
2 BDR	6/4	TIER 1	TIER 2	TIER 4	TIER 5
2 BDR Mountain View	6/4	TIER 2	TIER 3	TIER 5	TIER 6
2 BDR Pedestal Duplex	6/4	TIER 2	TIER 3	TIER 5	TIER 6
2 BDR Pedestal Cottage w/Open Loft	6/4	TIER 2	TIER 3	TIER 5	TIER 6
<b>2025 Weeks</b>		1-2, 4-5, 8, 49	3, 6-7, 9-11, 13-14, 46, 50	12, 15-20, 22, 24-26, 38-45	21, 23, 27-31, 47-48, 51-52
<b>2026 Weeks</b>		1-2, 4-5, 8, 49	3, 6-7, 9-11, 15-16, 46, 50	12-14, 17-20, 22, 24-26, 38-45	21, 23, 27-31, 47-48, 51-52

Check-in day for weekly occupancy: Any day.

## UTAH



### **M Cedar Breaks Lodge & Spa**

223 Hunter Ridge Road, Brian Head, Utah 84719, United States, **435-677-3000**

ACCOMMODATION	OCCUPANCY	LOW SEASON	MID SEASON	HIGH SEASON	PEAK SEASON
Junior Villa	2/2	-	-	TIER 3	TIER 3
Junior Villa	4/2	-	-	TIER 3	TIER 3
1 BDR	4/2	-	-	TIER 3	TIER 4
1 BDR Grand	4/2	-	-	TIER 4	TIER 4
2 BDR	6/4	-	-	TIER 4	TIER 5
2 BDR Grand	8/4	-	-	TIER 4	TIER 5
<b>2025 Weeks</b>		-	-	12-14, 17-21, 36-45	1-11, 15-16, 22-35, 46-52
<b>2026 Weeks</b>		-	-	12, 15-21, 36-45	1-11, 15-14, 22-35, 46-52

Check-in day for weekly occupancy: Any day.



### **Park Plaza Resort**

2060 Sidewinder Drive, Park City, Utah 84060, United States, **435-649-0870**

ACCOMMODATION	OCCUPANCY	LOW SEASON	MID SEASON	HIGH SEASON	PEAK SEASON
Studio	2/2	TIER 1	TIER 2	TIER 2	TIER 3
1 BDR	4/2	TIER 2	TIER 2	TIER 3	TIER 3
2 BDR	6/4	TIER 2	TIER 3	TIER 4	TIER 4
<b>2025 Weeks</b>		17-21, 39-47	22-25, 32-38, 48-49	26-31, 50	1-16, 51-52
<b>2026 Weeks</b>		17-21, 39-47	22-25, 32-38, 48-49	26-31, 50	1-16, 51-52

Check-in day for weekly occupancy: Saturday. Studios & Mini Studios \$15 per day; 1 & 2 BDRs: \$20 per day. Guests must contact resort if arriving late or on a day other than what is listed on confirmation.



### **RVC's The Miners Club**

4070 North Willow Draw, Park City, Utah 84098, United States, **435-645-4400**

ACCOMMODATION	OCCUPANCY	LOW SEASON	MID SEASON	HIGH SEASON	PEAK SEASON
2 BDR	6/4	TIER 2	TIER 2	TIER 3	TIER 4
3 BDR	8/6	TIER 2	TIER 3	TIER 4	TIER 5
4 BDR	10/8	TIER 3	TIER 4	TIER 6	TIER 6
<b>2025 Weeks</b>		17-21, 39-47	22-25, 32-38, 48-49	26-31, 50	1-16, 51-52
<b>2026 Weeks</b>		17-21, 39-47	22-25, 32-38, 48-49	26-31, 50	1-16, 51-52

Check-in day for weekly occupancy: Saturday.

## VIRGINIA



### M Beach Quarters Resort

501 Atlantic Avenue, Virginia Beach, Virginia 23451, United States, **757-422-3186**

ACCOMMODATION	OCCUPANCY	LOW SEASON	MID SEASON	HIGH SEASON	PEAK SEASON
Ocean Front Studio	2/2	TIER 1	TIER 2	TIER 2	TIER 2
1 BDR Ocean Front - Max 4	4/2	TIER 2	TIER 2	TIER 2	TIER 2
1 BDR Ocean Front - Max 6	6/2	TIER 2	TIER 2	TIER 2	TIER 3
2 BDR Ocean Front Lockoff	8/4	TIER 3	TIER 3	TIER 4	TIER 4
<b>2025 Weeks</b>		1-8, 48-50	9-11, 17, 44-47	12-16, 18-23, 33-34, 36-43, 51-52	24-32, 35
<b>2026 Weeks</b>		1-8, 48-50	9-11, 17, 44-47	12-16, 18-23, 33-34, 36-43, 51-52	24-32, 35

Check-in day for weekly occupancy: Any day.



### M Boardwalk Resort & Villas

1601 Atlantic Avenue, Virginia Beach, Virginia 23451, United States, **757-213-3099**

ACCOMMODATION	OCCUPANCY	LOW SEASON	MID SEASON	HIGH SEASON	PEAK SEASON
Studio - City View	2/2	TIER 1	TIER 2	TIER 2	TIER 2
Deluxe Studio - Ocean View	2/2	TIER 2	TIER 2	TIER 2	TIER 3
1 BDR City View	4/2	TIER 2	TIER 2	TIER 3	TIER 4
1 BDR Ocean Front - Max 4	4/2	TIER 2	TIER 2	TIER 4	TIER 4
1 BDR Ocean Front - Max 6	6/2	TIER 2	TIER 2	TIER 4	TIER 4
2 BDR Lockoff - Ocean View	6/4	TIER 3	TIER 4	TIER 5	TIER 6
2 BDR Ocean Front	8/4	TIER 3	TIER 4	TIER 5	TIER 6
3 BDR Lockoff - Ocean Front	10/6	TIER 4	TIER 5	TIER 6	TIER 6
<b>2025 Weeks</b>		1-8, 48-50	9-11, 17, 44-47	12-16, 18-23, 33-34, 36-43, 51-52	24-32, 35
<b>2026 Weeks</b>		1-8, 48-50	9-11, 17, 44-47	12-16, 18-23, 33-34, 36-43, 51-52	24-32, 35

Check-in day for weekly occupancy: Any day.



### M Greensprings, a Hilton Vacation Club

3500 Ludwell Parkway, Williamsburg, Virginia 23188, United States, **757-253-1177**

ACCOMMODATION	OCCUPANCY	LOW SEASON	MID SEASON	HIGH SEASON	PEAK SEASON
2 BDR	6/4	TIER 2	TIER 3	TIER 4	TIER 5
4 BDR	12/8	TIER 4	TIER 5	TIER 6	TIER 6
<b>2025 Weeks</b>		1-11, 17, 44-46, 48-50	12-14, 18-20, 37-43	21-26, 28-36	15-16, 27, 47, 51-52
<b>2026 Weeks</b>		1-11, 17, 44-46, 48-50	12, 15-16, 18-20, 37-43	21-26, 28-36	13-14, 27, 47, 51-52

Check-in for weekly occupancy: Any day. No Elevator

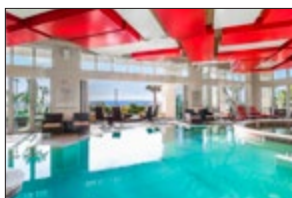


### M Ocean Beach Club, a Hilton Vacation Club

3401 Atlantic Avenue, Virginia Beach, Virginia 23451, United States, **757-213-0601**

ACCOMMODATION	OCCUPANCY	LOW SEASON	MID SEASON	HIGH SEASON	PEAK SEASON
Studio	2/2	TIER 2	TIER 2	TIER 2	TIER 3
Studio Dbl Ocean Front	4/2	TIER 2	TIER 2	TIER 2	TIER 3
Studio Ocean Front	2/2	TIER 2	TIER 2	TIER 3	TIER 3
1 BDR Suite No Balcony	4/2	TIER 2	TIER 2	TIER 3	TIER 4
1 BDR Suite w/ Balcony Restricted View	4/2	TIER 2	TIER 3	TIER 3	TIER 4
1 BDR Suite Ocean View	4/2	TIER 2	TIER 3	TIER 4	TIER 4
1 BDR Suite Ocean Front	4/2	TIER 2	TIER 3	TIER 5	TIER 5
2 BDR Suite City View	6/4	TIER 3	TIER 4	TIER 6	TIER 6
2 BDR Suite Split Level City View	6/4	TIER 3	TIER 4	TIER 6	TIER 6
2 BDR Suite Dlx Ocean Front	6/4	TIER 4	TIER 5	TIER 6	TIER 6
2 BDR Suite Ocean Front	6/4	TIER 3	TIER 5	TIER 6	TIER 6
2 BDR Ste Split Level Ocean Front	6/4	TIER 4	TIER 5	TIER 6	TIER 6
3 BDR Suite Non Ocean Front	8/6	TIER 5	TIER 6	TIER 6	TIER 6
3 BDR Suite (Max 10) Ocean Front	10/6	TIER 5	TIER 6	TIER 6	TIER 6
3 BDR Suite Ocean Front	8/6	TIER 5	TIER 6	TIER 6	TIER 6
3 BDR Suite Dlx Ocean Front	8/6	TIER 5	TIER 6	TIER 6	TIER 6
<b>2025 Weeks</b>		1-8, 48-50	9-11, 17, 44-47	12-16, 18-23, 33-34, 36-43, 51-52	24-32, 35
<b>2026 Weeks</b>		1-8, 48-50	9-11, 17, 44-47	12-16, 18-23, 33-34, 36-43, 51-52	24-32, 35

Check-in day for weekly occupancy: Any day.



### **M** Oceanaire, a Hilton Vacation Club

3421 Atlantic Avenue, Virginia Beach, Virginia 23451, United States, **757-213-0601**

ACCOMMODATION	OCCUPANCY	LOW SEASON	MID SEASON	HIGH SEASON	PEAK SEASON
Studio	4/2	TIER 2	TIER 2	TIER 3	TIER 4
Studio w/ Ocean View Balcony	4/2	TIER 2	TIER 2	TIER 3	TIER 4
Studio w/ Ocean Front Balcony	4/2	TIER 2	TIER 3	TIER 4	TIER 5
1 BDR Ocean View Balcony	4/2	TIER 2	TIER 3	TIER 4	TIER 6
1 BDR Ocean Front Balcony	4/2	TIER 3	TIER 3	TIER 5	TIER 6
1 BDR Ocean Front	4/2	TIER 3	TIER 3	TIER 5	TIER 6
2 BDR Ocean View Suite	8/4	TIER 4	TIER 5	TIER 6	TIER 6
2 BDR Ocean Front Suite-Max 6	6/4	TIER 4	TIER 5	TIER 6	TIER 6
2 BDR Ocean Front Suite-Max 8	8/4	TIER 4	TIER 5	TIER 6	TIER 6
2 BDR Deluxe Ocean Front Ste	8/4	TIER 4	TIER 6	TIER 6	TIER 6
3 BDR Ocean Front Ste	10/6	TIER 5	TIER 6	TIER 6	TIER 6
3 BDR Ocean Front Penthouse	10/6	TIER 6	TIER 6	TIER 6	TIER 6
<b>2025 Weeks</b>		1-8, 48-50	9-11, 17, 44-47	12-16, 18-23, 33-34, 36-43, 51-52	24-32, 35
<b>2026 Weeks</b>		1-8, 48-50	9-11, 17, 44-47	12-16, 18-23, 33-34, 36-43, 51-52	24-32, 35

Check-in day for weekly occupancy: Any day.



### **M** The Historic Powhatan, a Hilton Vacation Club

3601 Ironbound Road, Williamsburg, Virginia 23188, United States, **757-220-1200**

ACCOMMODATION	OCCUPANCY	LOW SEASON	MID SEASON	HIGH SEASON	PEAK SEASON
1 BDR Upstairs	4/2	TIER 1	TIER 2	TIER 2	TIER 3
1 BDR Ground Floor	4/2	TIER 2	TIER 2	TIER 3	TIER 3
2 BDR	6/4	TIER 2	TIER 2	TIER 3	TIER 4
2 BDR Deluxe	6/4	TIER 2	TIER 3	TIER 4	TIER 5
3 BDR	8/6	TIER 2	TIER 3	TIER 4	TIER 5
4 BDR	12/8	TIER 3	TIER 4	TIER 6	TIER 6
4 BDR Deluxe	12/8	TIER 4	TIER 5	TIER 6	TIER 6
<b>2025 Weeks</b>		1-11, 17, 44-46, 48-50	12-14, 18-20, 37-43	21-26, 28-36	15-16, 27, 47, 51-52
<b>2026 Weeks</b>		1-11, 17, 44-46, 48-50	12, 15-16, 18-20, 37-43	21-26, 28-36	15-14, 27, 47, 51-52

Check-in for weekly occupancy: Any day. No Elevator.



### **M** Turtle Cay Resort

600 Atlantic Avenue, Virginia Beach, Virginia 23451, United States, **757-437-5565**

ACCOMMODATION	OCCUPANCY	LOW SEASON	MID SEASON	HIGH SEASON	PEAK SEASON
Studio	4/2	TIER 2	TIER 2	TIER 2	TIER 2
1 BDR	4/2	TIER 2	TIER 2	TIER 3	TIER 4
2 BDR Lockoff	8/4	TIER 3	TIER 4	TIER 4	TIER 5
2 BDR Penthouse	6/4	TIER 3	TIER 5	TIER 6	TIER 6
<b>2025 Weeks</b>		1-8, 48-50	9-11, 17, 44-47	12-16, 18-23, 33-34, 36-43, 51-52	24-32, 35
<b>2026 Weeks</b>		1-8, 48-50	9-11, 17, 44-47	12-16, 18-23, 33-34, 36-43, 51-52	24-32, 35

Check-in day for weekly occupancy: Any day.

## WASHINGTON



### **Blackbird Lodge**

305 8th Street, Leavenworth, Washington 98826, United States, **509-548-5800**

ACCOMMODATION	OCCUPANCY	LOW SEASON	MID SEASON	HIGH SEASON	PEAK SEASON
Studio Efficiency	2/2	TIER 2	TIER 2	TIER 3	TIER 3
Studio	2/2	TIER 2	TIER 2	TIER 3	TIER 3
<b>2025 Weeks</b>		1-12, 44-50	13-19, 39-43, 51-52	20-21, 35-38	22-34
<b>2026 Weeks</b>		1-12, 44-50	13-19, 39-43, 51-52	20-21, 35-38	22-34

Check-in day for weekly occupancy: Friday/Saturday/Sunday. Limited availability. Washington, Lynden.





### Point Brown

1413 Ocean Shores Boulevard Southwest, Ocean Shores, Washington 98569, United States, **360-289-0656**

ACCOMMODATION	OCCUPANCY	LOW SEASON	MID SEASON	HIGH SEASON	PEAK SEASON
Studio	2/2	TIER 1	TIER 2	TIER 2	TIER 3
1 BDR	4/2	TIER 2	TIER 2	TIER 2	TIER 3
2025 Weeks		1-3, 48-50	4-12, 43-47, 51-52	13-20, 39-42	21-38
2026 Weeks		1-3, 48-50	4-12, 43-47, 51-52	13-20, 39-42	21-38

Check-in day for weekly occupancy: Friday. Check in at Beachcomber Resort , 813 Ocean Shores Blvd. N.W., Ocean Shores, WA 98569, +1.360.289.2710. No elevator. No air conditioning.



### RVC's Sandcastle at Birch Bay

7854 Birch Bay Drive, Birch Bay, Washington 98230, United States, **360-371-4900**

ACCOMMODATION	OCCUPANCY	LOW SEASON	MID SEASON	HIGH SEASON	PEAK SEASON
2 BDR	6/6	TIER 2	TIER 2	TIER 3	TIER 4
3 BDR	6/6	TIER 2	TIER 3	TIER 4	TIER 4
2025 Weeks		1-3, 48-50	4-12, 43-47, 51-52	13-20, 39-42	21-38
2026 Weeks		1-3, 48-50	4-12, 43-47, 51-52	13-20, 39-42	21-38

Check-in day for weekly occupancy: Friday/Saturday/Sunday.



### VI at Homestead

109 East Homestead Boulevard, Lynden, Washington 98264, United States, **360-746-8314**

ACCOMMODATION	OCCUPANCY	LOW SEASON	MID SEASON	HIGH SEASON	PEAK SEASON
Studio	2/2	TIER 2	TIER 2	TIER 3	TIER 3
1 BDR	4/2	TIER 2	TIER 2	TIER 3	TIER 4
2025 Weeks		1-12, 44-50	13-19, 39-43, 51-52	20-21, 35-38	22-34
2026 Weeks		1-12, 44-50	13-19, 39-43, 51-52	20-21, 35-38	22-34

Check-in day for weekly occupancy: Friday/Saturday/Sunday.

## WISCONSIN



### Tamarack and Mirror Lake Resort

874 Xanadu Road, Wisconsin Dells, Wisconsin 53965, United States, **608-254-4929**

ACCOMMODATION	OCCUPANCY	LOW SEASON	MID SEASON	HIGH SEASON	PEAK SEASON
1 BDR	4/2	TIER 2	TIER 2	TIER 3	TIER 3
2 BDR	6/4	TIER 2	TIER 2	TIER 3	TIER 3
2025 Weeks		1-3, 44-50	4-20, 41-43, 51-52	21, 35-40	22-34
2026 Weeks		1-3, 44-50	4-20, 41-43, 51-52	21, 35-40	22-34

Check-in day for weekly occupancy: Sunday.

## ACAPULCO



## Mayan Palace Acapulco

Av. Costera De Las Palmas, No. 1121, Fracc Playa Diamante, Acapulco, Guerrero 39897, Mexico, **+52 744 469 6000**

ACCOMMODATION	OCCUPANCY	LOW SEASON	MID SEASON	HIGH SEASON	PEAK SEASON
Studio	2/2	-	TIER 3	TIER 3	TIER 4
1 BDR	4/2	-	TIER 3	TIER 4	TIER 4
2 BDR	6/4	-	TIER 4	TIER 4	TIER 5
2025 Weeks		-	33-45	17-25, 30-32, 46-50	1-16, 26-29, 51-52
2026 Weeks		-	33-45	17-25, 30-32, 46-50	1-16, 26-29, 51-52

Check-in day for weekly occupancy: Friday/Saturday/Sunday.

## COZUMEL



## Allegro Cozumel

Km. 16.5 Carretera Sur, San Francisco Palancar, Cozumel, Quintana Roo 77600, Mexico, **+52 987 872 9770**

ACCOMMODATION	OCCUPANCY	LOW SEASON	MID SEASON	HIGH SEASON	PEAK SEASON
Superior Hotel Room	2/2	-	TIER 2	TIER 2	TIER 3
2025 Weeks		-	33-45	17-25, 30-32, 46-50	1-16, 26-29, 51-52
2026 Weeks		-	33-45	17-25, 30-32, 46-50	1-16, 26-29, 51-52

Check-in day for weekly occupancy: Saturday. A mandatory all-inclusive resort.

## NUEVO VALLARTA



## Grand Luxxe Nuevo Vallarta

Av. Paseo de las Moras, Nuevo Vallarta, Nayarit 63735, Mexico, **+011 52 322 226 4000**

ACCOMMODATION	OCCUPANCY	LOW SEASON	MID SEASON	HIGH SEASON	PEAK SEASON
1 BDR	4/2	-	-	-	TIER 6
2 BDR	6/4	-	-	-	TIER 6
2025 Weeks		-	-	-	1-52
2026 Weeks		-	-	-	1-52

Check-in day for weekly occupancy: Friday. Weekly Resort Fee of \$75 plus tax. (plus applicable taxes & sanitation fees) will be applied to this reservation. This fee covers: one way airport pick up at arrival, WIFI, daily maid service, local phone calls, welcome cocktail party and turn down service. 3% State/Lodging Tax. 20 Pesos/- \$1.50 daily Environmental Sanitation Fee due at check-out.

## PUERTO VALLARTA



## RVC's Club Regina Puerto Vallarta

Paseo de La Marina Sur No. 205, Puerto Vallarta, Jalisco 48354, Mexico, **+52 322 226 6300**

ACCOMMODATION	OCCUPANCY	LOW SEASON	MID SEASON	HIGH SEASON	PEAK SEASON
Hotel Room	2/2	-	TIER 3	TIER 3	TIER 4
Hotel Room Suite	2/2	-	TIER 3	TIER 3	TIER 4
1 BDR	4/4	-	TIER 3	TIER 4	TIER 4
2 BDR	6/6	-	TIER 4	TIER 4	TIER 6
2025 Weeks		-	33-45	17-25, 30-32, 46-50	1-16, 26-29, 51-52
2026 Weeks		-	33-45	17-25, 30-32, 46-50	1-16, 26-29, 51-52

Check-in day for weekly occupancy: Friday/Saturday/Sunday. Daily resort fees of \$11 for Hotel Room, \$14 for 1 BDR and \$17 for 2 BDR applies. \$5 USD/day parking fee. Local taxes, parking and/or housekeeping fees may apply, payable to the resort. There is a per person, per night penalty for exceeding the maximum occupancy. The resort fees cover cost of Internet, activities and equipment for items such as bike tours\*, Kayaks\*, paddle boards\*, bingo, salsa dancing, water aerobics, beach volleyball, and many other activities as well as daily housekeeping tidy. \*Not available at all resorts.

## QUINTANA ROO



## Grand Luxxe Riviera Maya

Km. 48 Carretera Federal Cancun-Playa del Carmen, Quintana Roo 77710, Mexico, **+52 984 206 4000**

ACCOMMODATION	OCCUPANCY	LOW SEASON	MID SEASON	HIGH SEASON	PEAK SEASON
Studio	2/2	-	-	-	TIER 6
1 BDR	4/2	-	-	-	TIER 6
2 BDR	6/4	-	-	-	TIER 6
<b>2025 Weeks</b>		-	-	-	1-52
<b>2026 Weeks</b>		-	-	-	1-52

Check-in day for weekly occupancy: Friday. Weekly Resort Fee of \$75 (plus applicable taxes & sanitation fees) will be applied to this reservation. This fee covers: one way airport pick up at arrival, WIFI, daily maid service, local phone calls, welcome cocktail party and turn down service. 3% State/Lodging Tax. 20 Pesos/- \$1.50 daily Environmental Sanitation Fee due at check-out. Jungala Luxury Water Park open to all guests staying at this resort. Prices are \$59 USD per adult and \$44 USD per child for a day pass. Price includes park access, towels, lockers, free wi-fi, concierge services, and showers.

## SAN JOSE DEL CABO



## M Cabo Azul, a Hilton Vacation Club

Paseo Malecon s/n, Lote 11, Col. Fonatur, San Jose del Cabo, Baja California Del Sur 23400, Mexico, **+011 52 624 1635100**

ACCOMMODATION	OCCUPANCY	LOW SEASON	MID SEASON	HIGH SEASON	PEAK SEASON
Studio Blocked View	4/2	-	-	-	TIER 4
Studio Partial Courtyard or Partial Pool View	4/2	-	-	-	TIER 4
Studio Courtyard or Pool View	4/2	-	-	-	TIER 5
1 BDR Blocked View	4/2	-	-	-	TIER 4
1 BDR Garden View	4/2	-	-	-	TIER 4
1 BDR Pool or Partial Ocean View	4/2	-	-	-	TIER 6
1 BDR Deluxe Pool View	4/2	-	-	-	TIER 6
1 BDR Ocean view	4/2	-	-	-	TIER 6
2 BDR Blocked View	6/4	-	-	-	TIER 5
2 BDR Garden View	6/4	-	-	-	TIER 5
2 BDR Ninos Pool View	6/4	-	-	-	TIER 5
2 BDR Pool or Partial Ocean View	6/4	-	-	-	TIER 6
2 BDR Deluxe Pool View	6/4	-	-	-	TIER 6
2 BDR Ocean View	6/4	-	-	-	TIER 6
3 BDR Penthouse Ocean	6/6	-	-	-	TIER 6
3 BDR Grand Penthouse	6/6	-	-	-	TIER 6
<b>2025 Weeks</b>		-	-	-	1-52
<b>2026 Weeks</b>		-	-	-	1-52

Check-in day for weekly occupancy: Any day.



## RVC's Club Regina Los Cabos

Carretera Transpeninsular Km. 22.5, Cerro Colorado, San Jose del Cabo 23400, Mexico, **+52 624 163 7200**

ACCOMMODATION	OCCUPANCY	LOW SEASON	MID SEASON	HIGH SEASON	PEAK SEASON
Hotel Room	2/2	-	TIER 3	TIER 4	TIER 4
Hotel Room Suite	2/2	-	TIER 3	TIER 4	TIER 4
1 BDR	4/2	-	TIER 4	TIER 4	TIER 5
<b>2025 Weeks</b>		-	33-45	17-25, 30-32, 46-50	1-6, 26-29, 51-52
<b>2026 Weeks</b>		-	33-45	17-25, 30-32, 46-50	1-6, 26-29, 51-52

Check-in day for weekly occupancy: Friday/Saturday/Sunday. There is a daily resort fee (subject to change) as outlined. The Resort Fee includes WiFi (up to 3 devices) and housekeeping. Daily resort fees of \$11 for Hotel Room/Hotel Room Suite and \$14 for 1 BDR applies. The resort fees cover cost of Internet, activities and equipment for items such as bike tours\*, Kayaks\*, paddle boards\*, bingo, salsa dancing, water aerobics, beach volleyball, and many other activities as well as daily housekeeping tidy. \*Not available at all resorts.



ZIHUATANEJO



**M Hilton Grand Vacations Club Zihuatanejo**

Carretera Escencia a Playa la Ropa, Zihuatanejo, Guerrero, Mexico 40895, +011 52 755 555 0350

ACCOMMODATION	OCCUPANCY	LOW SEASON	MID SEASON	HIGH SEASON	PEAK SEASON
Studio	2/2	-	TIER 3	TIER 3	TIER 4
Lookout Studio	2/2	-	TIER 4	TIER 5	TIER 6
1 BDR	2/4	-	TIER 3	TIER 3	TIER 4
1 BDR 2 Bath	2/4	-	TIER 4	TIER 5	TIER 6
1 BDR 2 Bath Ocean View	2/4	-	TIER 5	TIER 6	TIER 6
1 BDR 2 Bath Beachfront	2/4	-	TIER 5	TIER 6	TIER 6
2 BDR	4/6	-	TIER 5	TIER 6	TIER 6
2 BDR Beachfront	4/6	-	TIER 6	TIER 6	TIER 6
3 BDR Ocean View	6/8	-	TIER 6	TIER 6	TIER 6
3 BDR Villa Ocean View	6/8	-	TIER 6	TIER 6	TIER 6
2025 Weeks	-	-	22-38	1-5, 7-8, 11-12, 14-21, 39-46, 48	6, 9-10, 13, 47, 49-52
2026 Weeks	-	-	22-39	1-6, 8-9, 12-13, 15-21, 40-46, 48-49	7, 10-11, 14, 47, 50-52

Check-in day for weekly occupancy: Any day.

## ARUBA



## Barceló Aruba

J.E. Irausquin Boulevard 83, Palm Beach, Aruba, +297 5864 500

ACCOMMODATION	OCCUPANCY	LOW SEASON	MID SEASON	HIGH SEASON	PEAK SEASON
Deluxe Hotel Room	2/2	-	TIER 3	TIER 3	TIER 4
Studio	2/2	-	TIER 3	TIER 3	TIER 4
1 BDR	2/2	-	TIER 3	TIER 4	TIER 5
2 BDR	2/2	-	TIER 4	TIER 5	TIER 6
2025 Weeks		-	35-43	15, 17-34, 44-50	1-14, 16, 51-52
2026 Weeks		-	35-43	15, 17-34, 44-50	1-14, 16, 51-52

Check-in day for weekly occupancy: Saturday. A mandatory all-inclusive resort.

## DOMINICAN REPUBLIC



## Grand Palladium Punta Cana Resort &amp; Spa

C/ El Cortecito, Playa Bavaro, Punta Cana, Dominican Republic, 809-221-8149

ACCOMMODATION	OCCUPANCY	LOW SEASON	MID SEASON	HIGH SEASON	PEAK SEASON
Junior Suite Hotel Room	2/2	-	TIER 3	TIER 3	TIER 4
2 BDR Lock-Off Suite	6/4	-	TIER 4	TIER 4	TIER 5
2025 Weeks		-	34-45	15, 17-25, 30-33, 46-50	1-14, 16, 26-29, 51-52
2026 Weeks		-	34-45	15, 17-25, 30-33, 46-50	1-14, 16, 26-29, 51-52

Check-in day for weekly occupancy: Friday. A mandatory all-inclusive resort. Max occupancy for the Junior Suite Hotel Room may be increased to 4 to accommodate up to 2 children, age 0-12.



## Occidental Punta Cana

Avenida Espana, Bavaro, Dominican Republic, 809-221-8787

ACCOMMODATION	OCCUPANCY	LOW SEASON	MID SEASON	HIGH SEASON	PEAK SEASON
Deluxe Hotel Room	2/2	-	TIER 3	TIER 3	TIER 4
Studio	2/2	-	TIER 3	TIER 3	TIER 4
1 BDR	2/2	-	TIER 3	TIER 4	TIER 5
2 BDR	2/2	-	TIER 4	TIER 5	TIER 6
2025 Weeks		-	34-45	15, 17-25, 30-33, 46-50	1-14, 16, 26-29, 51-52
2026 Weeks		-	34-45	15, 17-25, 30-33, 46-50	1-14, 16, 26-29, 51-52

Check-in day for weekly occupancy: Saturday. A mandatory all-inclusive resort.

## SINT MAARTEN



## Atrium Beach Resort and Spa

6 Billy Folly Road, Simpson Bay, St. Maarten, 888-992-8748

ACCOMMODATION	OCCUPANCY	LOW SEASON	MID SEASON	HIGH SEASON	PEAK SEASON
Studio	2/2	-	TIER 2	TIER 3	TIER 4
1 BDR	4/2	-	TIER 3	TIER 4	TIER 5
2 BDR	6/4	-	TIER 3	TIER 4	TIER 5
2025 Weeks		-	33-43	17-32, 44-50	1-16, 51-52
2026 Weeks		-	33-43	17-32, 44-50	1-16, 51-52

Check-in day for weekly occupancy: Saturday. Resort fee \$50 per week plus energy surcharge of \$4.50 per person/per day paid by guest at check-in. Guests must contact resort if arriving late or on a day other than what is listed on confirmation. Cribs and rollways are available free of charge.



### **M** Flamingo Beach, a Hilton Vacation Club

Pelican Key, Simpson Bay, 6 Billy Folly Road, Sint Maarten, Netherlands Antilles, **011-721-544-3900**

ACCOMMODATION	OCCUPANCY	LOW SEASON	MID SEASON	HIGH SEASON	PEAK SEASON
Studio - Phase I	4/2	-	TIER 2	TIER 2	TIER 3
Studio Ocean View - Phase I	4/2	-	TIER 2	TIER 3	TIER 3
1 BDR Ocean Front - Phase I	4/4	-	TIER 3	TIER 3	TIER 4
1 BDR Villas - Phase II	4/2	-	TIER 3	TIER 4	TIER 5
2 BDR Villas - Phase II	8/6	-	TIER 4	TIER 5	TIER 6
<b>2025 Weeks</b>		-	34-39	1-14, 17-26, 28-33, 40-46, 48-50	15-16, 27, 47, 51-52
<b>2026 Weeks</b>		-	34-39	1-12, 15-26, 28-33, 40-46, 48-50	13-14, 27, 47, 51-52

Check-in day for weekly occupancy: Any day.



### **M** Royal Palm, a Hilton Vacation Club

115 Welfare Road, Cole Bay, Philipsburg, St. Maarten, **011-721-544-3737**

ACCOMMODATION	OCCUPANCY	LOW SEASON	MID SEASON	HIGH SEASON	PEAK SEASON
1 BDR Ocean View	4/4	-	TIER 3	TIER 3	TIER 4
2 BDR Ocean View	6/6	-	TIER 3	TIER 4	TIER 5
3 BDR Ocean View	8/8	-	TIER 4	TIER 5	TIER 6
<b>2025 Weeks</b>		-	34-39	1-14, 17-26, 28-33, 40-46, 48-50	15-16, 27, 47, 51-52
<b>2026 Weeks</b>		-	34-39	1-12, 15-26, 28-33, 40-46, 48-50	13-14, 27, 47, 51-52

Check-in day for weekly occupancy: Any day.

## ENGLAND

**M Cromer Country Club**127 Overstrand Road, Cromer, Norfolk, NR27 0DJ, United Kingdom, **+44 1263 513 833**

ACCOMMODATION	OCCUPANCY	LOW SEASON	MID SEASON	HIGH SEASON	PEAK SEASON
Studio	2/2	TIER 1	TIER 2	TIER 3	TIER 3
1 Bedroom	4/2	TIER 2	TIER 3	TIER 4	TIER 4
1 Bedroom Superior	4/2	TIER 2	TIER 3	TIER 4	TIER 4
2 Bedroom	6/4	TIER 2	TIER 3	TIER 4	TIER 5
3 Bedroom	7/6	TIER 3	TIER 4	TIER 5	TIER 5
<b>2025 Weeks</b>		1-12, 46-50	13-14, 17-20, 23-24, 39-40, 43-45, 51-52	15-16, 21-22, 25-26, 37-38	27-36, 41-42
<b>2026 Weeks</b>		1-12, 46-50	15-20, 23-24, 39-40, 43-45, 51-52	13-14, 21-22, 25-26, 37-38	27-36, 41-42

Check-in day for weekly occupancy: Saturday.

**M Pine Lake Resort**Dock Acres, Carnforth, Lancashire, LA6 1JZ, United Kingdom, **+44 1524 736190**

ACCOMMODATION	OCCUPANCY	LOW SEASON	MID SEASON	HIGH SEASON	PEAK SEASON
Studio	2/2	TIER 2	TIER 3	TIER 3	TIER 3
2 BDR	6/4	TIER 2	TIER 3	TIER 4	TIER 4
<b>2025 Weeks</b>		1-12, 46-50	13-14, 17-20, 23-24, 39-40, 43-45, 51-52	15-16, 21-22, 25-26, 37-38	27-36, 41-42
<b>2026 Weeks</b>		1-12, 46-50	15-20, 23-24, 39-40, 43-45, 51-52	13-14, 21-22, 25-26, 37-38	27-36, 41-42

Check-in day for weekly Occupancy: Saturday.

**M Thurnham Hall**Thurnham, Nr. Lancaster, Lancashire, LA2 0DT, United Kingdom, **+44 1524 751 766**

ACCOMMODATION	OCCUPANCY	LOW SEASON	MID SEASON	HIGH SEASON	PEAK SEASON
Studio	2/2	TIER 2	TIER 2	TIER 3	TIER 3
1 BDR	4/2	TIER 2	TIER 3	TIER 4	TIER 4
1 BDR Family	4/2	TIER 2	TIER 3	TIER 4	TIER 4
2 BDR	6/4	TIER 3	TIER 4	TIER 5	TIER 5
2 BDR Elite	6/4	TIER 3	TIER 4	TIER 5	TIER 5
<b>2025 Weeks</b>		1-12, 46-50	13-14, 17-20, 23-24, 39-40, 43-45, 51-52	15-16, 21-22, 25-26, 37-38	27-36, 41-42
<b>2026 Weeks</b>		1-12, 46-50	15-20, 23-24, 39-40, 43-45, 51-52	13-14, 21-22, 25-26, 37-38	27-36, 41-42

Check-in day for weekly Occupancy: Friday/Sunday.

**M Woodford Bridge Country Club**Milton Damerel, Nr. Holsworthy, Devon, EX22 7LL, United Kingdom, **+44 1409 261 481**

ACCOMMODATION	OCCUPANCY	LOW SEASON	MID SEASON	HIGH SEASON	PEAK SEASON
Club Suite	2/2	TIER 1	TIER 2	TIER 2	TIER 3
1 BDR Junior	4/2	TIER 2	TIER 2	TIER 3	TIER 3
1 BDR Standard	4/2	TIER 2	TIER 3	TIER 3	TIER 3
1 BDR Lodge	4/2	TIER 2	TIER 3	TIER 4	TIER 4
2 BDR Lodge	6/4	TIER 2	TIER 4	TIER 4	TIER 4
<b>2025 Weeks</b>		1-12, 46-50	13-14, 17-20, 23-24, 39-40, 43-45, 51-52	15-16, 21-22, 25-26, 37-38	27-36, 41-42
<b>2026 Weeks</b>		1-12, 46-50	15-20, 23-24, 39-40, 43-45, 51-52	13-14, 21-22, 25-26, 37-38	27-36, 41-42

Check-in day for weekly occupancy: Friday/Saturday/Sunday.

**M Wychnor Park Country Club**Wychnor Hall, Nr. Barton under Needwood, Burton on Trent, Staffordshire, DE13 8BU, United Kingdom, **+44 1283 791 391**

ACCOMMODATION	OCCUPANCY	LOW SEASON	MID SEASON	HIGH SEASON	PEAK SEASON
1 BDR	4/2	TIER 2	TIER 3	TIER 4	TIER 4
2 BDR	6/4	TIER 2	TIER 4	TIER 4	TIER 4
3 BDR	6/6	TIER 3	TIER 4	TIER 4	TIER 5
<b>2025 Weeks</b>		1-12, 46-50	13-14, 17-20, 23-24, 39-40, 43-45, 51-52	15-16, 21-22, 25-26, 37-38	27-36, 41-42
<b>2026 Weeks</b>		1-12, 46-50	15-20, 23-24, 39-40, 43-45, 51-52	13-14, 21-22, 25-26, 37-38	27-36, 41-42

Check-in day for weekly occupancy: Saturday.



## SCOTLAND


**M Craigendarroch Lodges, Managed by Hilton Grand Vacations**

 Braemar Road, Ballater, AB35 5XA, Scotland **+44 1339 755558**

ACCOMMODATION	OCCUPANCY	LOW SEASON	MID SEASON	HIGH SEASON	PEAK SEASON
Studio	2/2	TIER 1	TIER 1	TIER 2	TIER 2
1 BDR	4/2	TIER 2	TIER 2	TIER 3	TIER 4
2 BDR	6/4	TIER 2	TIER 3	TIER 4	TIER 6
3 BDR	8/6	TIER 3	TIER 4	TIER 5	TIER 6
<b>2025 Weeks</b>		2-4, 48-50	5-6, 44-47	7-13, 16-20	1, 14-15, 21-43, 51-52
<b>2026 Weeks</b>		2-4, 48-50	5-6, 44-47	7-13, 16-20	1, 14-15, 21-43, 51-52

Check-in day for weekly occupancy: Saturday/Sunday.


**M Coylumbridge Highland Lodges**

 Coylumbridge, Aviemore, PH22 1QN, Scotland **+44 1479 811147**

ACCOMMODATION	OCCUPANCY	LOW SEASON	MID SEASON	HIGH SEASON	PEAK SEASON
2 BDR	6/4	TIER 2	TIER 3	TIER 4	TIER 6
3 BDR	8/6	TIER 3	TIER 4	TIER 5	TIER 6
<b>2025 Weeks</b>		2-4, 48-50	5-6, 44-47	7-13, 16-20	1, 14-15, 21-43, 51-52
<b>2026 Weeks</b>		2-4, 48-50	5-6, 44-47	7-13, 16-20	1, 14-15, 21-43, 51-52

Check-in day for weekly occupancy: Saturday/Sunday.


**M The Kenmore Club**

 Kenmore by Aberfeldy, Perthshire, PH15 2HH, Scotland. **+44 01887 830555**

ACCOMMODATION	OCCUPANCY	LOW SEASON	MID SEASON	HIGH SEASON	PEAK SEASON
1 BDR	4/2	TIER 3	TIER 4	TIER 4	TIER 4
2 BDR	6/4	TIER 3	TIER 4	TIER 5	TIER 5
2 BDR Elite	6/4	TIER 3	TIER 4	TIER 5	TIER 5
3 BDR	8/6	TIER 4	TIER 5	TIER 5	TIER 6
<b>2025 Weeks</b>		1-12, 46-50	18-19, 37-40, 43-45	13-17, 20-27, 36, 41-42, 51-52	28-35
<b>2026 Weeks</b>		1-12, 46-50	18-19, 37-40, 43-45	13-17, 20-27, 36, 41-42, 51-52	28-35

Check-in day for weekly occupancy: Saturday and Sunday.

## AUSTRIA


**M Alpine Club**

 Alpineweg 142, 8971, Rohrmoos/Schladming, Austria, **+43 3687 61215**

ACCOMMODATION	OCCUPANCY	LOW SEASON	MID SEASON	HIGH SEASON	PEAK SEASON
Studio	2/2	TIER 1	TIER 2	TIER 3	TIER 4
1 BDR	4/2	TIER 2	TIER 2	TIER 3	TIER 4
2 BDR	6/4	TIER 2	TIER 3	TIER 3	TIER 5
2 BDR Elite	6/4	TIER 2	TIER 3	TIER 4	TIER 5
<b>2025 Weeks</b>		45-50	13-14, 17-20, 38-44	15-16, 21-37	1-12, 51-52
<b>2026 Weeks</b>		45-50	12, 16-20, 38-44	14-15, 21-37	1-11, 13, 51-52

Check-in day for weekly occupancy: Saturday.

## BULGARIA

**Balkan Jewel Resort**Area Betolovoto, 2760, Razlog, Bulgaria, **+359 47 98 111**

ACCOMMODATION	OCCUPANCY	LOW SEASON	MID SEASON	HIGH SEASON	PEAK SEASON
Club Suite	2/2	-	TIER 2	TIER 2	TIER 3
Studio	3/2	-	TIER 2	TIER 2	TIER 3
Studio Suite	4/2	-	TIER 2	TIER 3	TIER 3
1 BDR	3/2	-	TIER 2	TIER 3	TIER 3
1 BDR Family	4/2	-	TIER 3	TIER 3	TIER 4
2 BDR	5/3	-	TIER 3	TIER 3	TIER 4
2 BDR Family	6/4	-	TIER 3	TIER 4	TIER 4
<b>2025 Weeks</b>		-	18-20, 22-24, 39-40, 43-44	13-17, 21, 25-38, 41-42, 45-50	1-12, 51-52
<b>2026 Weeks</b>		-	18-21, 23-24, 39-40, 43-44	13-17, 22, 25-38, 41-42, 45-50	1-12, 51-52

Check-in day for weekly occupancy: Saturday.

## ITALY

**M Palazzo at Soriano**Via Montecavallo, 55, 01038, Lazio, Viterbo, Italy, **+39 0761 744030**

ACCOMMODATION	OCCUPANCY	LOW SEASON	MID SEASON	HIGH SEASON	PEAK SEASON
Studio	2/2	TIER 4	TIER 5	TIER 5	TIER 6
1 BDR	2/2	TIER 5	TIER 6	TIER 6	TIER 6
1 BDR Deluxe	2/2	TIER 5	TIER 6	TIER 6	TIER 6
1 BDR Villa	6/2	TIER 6	TIER 6	TIER 6	TIER 6
2 BDR	4/2	TIER 6	TIER 6	TIER 6	TIER 6
<b>2025 Weeks</b>		1-4, 49-50	5-12, 43-48	13-23, 38-42, 51-52	24-37
<b>2026 Weeks</b>		1-4, 49-50	5-12, 43-48	13-23, 38-42, 51-52	24-37

Check-in day for weekly occupancy: Saturday.

**M Palazzo Catalani**Via Montecavallo, 26, 01038 Soriano nel Cimino (VT), Italy, **+39 0761 744030**

ACCOMMODATION	OCCUPANCY	LOW SEASON	MID SEASON	HIGH SEASON	PEAK SEASON
Club Suite	2/2	TIER 2	TIER 3	TIER 3	TIER 3
Studio	3/3	TIER 2	TIER 3	TIER 3	TIER 4
1 BDR	4/2	TIER 2	TIER 3	TIER 4	TIER 4
<b>2025 Weeks</b>		1-4, 49-50	5-12, 43-48	13-23, 38-42, 51-52	24-37
<b>2026 Weeks</b>		1-4, 49-50	5-12, 43-48	13-23, 38-42, 51-52	24-37

Check-in day for weekly occupancy: Saturday.

## FRANCE

**M Le Club Mougins**199 Chemin du Val Fleuri, 06250 Mougins, France, **+33 4 92 92 46 00**

ACCOMMODATION	OCCUPANCY	LOW SEASON	MID SEASON	HIGH SEASON	PEAK SEASON
1 BDR	4/2	TIER 2	TIER 2	TIER 3	TIER 4
2 BDR	6/4	TIER 3	TIER 3	TIER 4	TIER 5
3 BDR	8/6	TIER 3	TIER 4	TIER 4	TIER 5
<b>2025 Weeks</b>		1-11, 45-50	12-14, 17-20, 39-44	15-16, 21-27, 36-38, 51-52	28-35
<b>2026 Weeks</b>		1-11, 45-50	12, 15-20, 39-44	13-14, 21-27, 36-38, 51-52	28-35

Check-in day for weekly occupancy: Saturday/Sunday.



### **M** Royal Regency Paris Vincennes

69/71, Rue Defrance, 94300, Vincennes, France, **+33 1 49 57 12 00**

ACCOMMODATION	OCCUPANCY	LOW SEASON	MID SEASON	HIGH SEASON	PEAK SEASON
Studio	2/2	-	-	TIER 3	TIER 3
1 BDR	4/2	-	-	TIER 3	TIER 4
2 BDR	6/4	-	-	TIER 4	TIER 5
3 BDR	8/6	-	-	TIER 5	TIER 6
2025 Weeks		-	-	2-12, 45-48	1, 13-44, 49-52
2026 Weeks		-	-	2-12, 45-48	1, 13-44, 49-52

Check-in day for weekly occupancy: Saturday.

## PORTUGAL



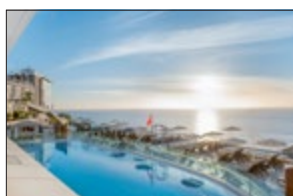
### **M** Vilar do Golf

Quinta Do Lago, 8135-903, Almancil, Algarve, Portugal, **+35 128 935 2000**

ACCOMMODATION	OCCUPANCY	LOW SEASON	MID SEASON	HIGH SEASON	PEAK SEASON
1 BDR	4/2	TIER 2	TIER 3	TIER 3	TIER 4
2 BDR	6/4	TIER 3	TIER 3	TIER 4	TIER 4
2 BDR Family	6/4	TIER 3	TIER 3	TIER 4	TIER 4
2025 Weeks		1-12, 46-50	13-14, 17-20, 23-24, 39-40, 43-45, 51-52	15-16, 21-22, 25-26, 37-38	27-36, 41-42
2026 Weeks		1-12, 46-50	15-20, 23-24, 39-40, 43-45, 51-52	13-14, 21-22, 25-26, 37-38	27-36, 41-42

Check-in day for weekly occupancy: Friday/Saturday

## SPAIN



### **M** Club Cala Blanca

Calle Albaicin 12, Urbanizacion Costa Taurito, 35138 Mogan, Gran Canaria, Canary Island, Spain, **+34 928 56 50 00**

ACCOMMODATION	OCCUPANCY	LOW SEASON	MID SEASON	HIGH SEASON	PEAK SEASON
1 BDR	4/2	-	TIER 1	TIER 2	TIER 2
2 BDR	6/4	-	TIER 2	TIER 3	TIER 3
2025 Weeks		-	14, 17-20, 44-50	1-13, 21-25, 36-40, 43, 51-52	15-16, 26-35, 41-42
2026 Weeks		-	12, 17-20, 44-50	1-11, 15-16, 21-25, 36-40, 43, 51-52	13-14, 26-35, 41-42

Check-in day for weekly occupancy: Saturday.

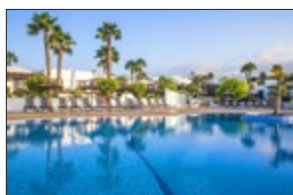


### **M** Club del Carmen

Calle Noruega 2, Playa de los Pocillos, 35510, Puerto Del Carmen, Lanzarote, Canary Islands, Spain, **+34 928 51 27 45**

ACCOMMODATION	OCCUPANCY	LOW SEASON	MID SEASON	HIGH SEASON	PEAK SEASON
1 BDR	4/2	-	TIER 2	TIER 3	TIER 3
2 BDR	6/4	-	TIER 2	TIER 3	TIER 3
2 BDR Villa	6/4	-	TIER 3	TIER 3	TIER 4
2025 Weeks		-	14, 17-20, 44-50	1-13, 21-25, 36-40, 43, 51-52	15-16, 26-35, 41-42
2026 Weeks		-	12, 17-20, 44-50	1-11, 15-16, 21-25, 36-40, 43, 51-52	13-14, 26-35, 41-42

Check-in day for weekly occupancy: Saturday/Thursday.



### **M** Jardines del Sol

Calle Francia 1, Urb. Montana Roja, Playa Blanca, 35570 Yaiza, Lanzarote, Canary Islands, Spain, **+34 928 51 76 08**

ACCOMMODATION	OCCUPANCY	LOW SEASON	MID SEASON	HIGH SEASON	PEAK SEASON
2 BDR Villa	6/4	-	TIER 3	TIER 4	TIER 5
3 BDR Villa	8/6	-	TIER 4	TIER 5	TIER 6
4 BDR Villa	10/8	-	TIER 4	TIER 6	TIER 6
2025 Weeks		-	14, 17-20, 44-50	1-13, 21-25, 36-40, 43, 51-52	15-16, 26-35, 41-42
2026 Weeks		-	12, 17-20, 44-50	1-11, 15-16, 21-25, 36-40, 43, 51-52	13-14, 26-35, 41-42

Check-in day for weekly occupancy: Saturday.



### M Los Amigos Beach Club

Urb. Playamarina, Carretera de Cadiz Km. 204, 29649 Mijas Costa, Málaga, Spain, **+34 952 46 86 86**

ACCOMMODATION	OCCUPANCY	LOW SEASON	MID SEASON	HIGH SEASON	PEAK SEASON
Studio Suite	2/2	TIER 2	TIER 2	TIER 3	TIER 3
1 BDR	4/2	TIER 2	TIER 2	TIER 3	TIER 3
1 BDR Elite	4/2	TIER 2	TIER 3	TIER 3	TIER 4
2 BDR	6/4	TIER 2	TIER 3	TIER 3	TIER 4
2 BDR Elite	6/4	TIER 3	TIER 3	TIER 4	TIER 4
3 BDR	8/6	TIER 2	TIER 4	TIER 4	TIER 4
<b>2025 Weeks</b>		1-12, 46-50	13-14, 17-20, 23-24, 39-40, 43-45, 51-52	15-16, 21-22, 25-26, 37-38	27-36, 41-42
<b>2026 Weeks</b>		1-12, 46-50	15-20, 23-24, 39-40, 43-45, 51-52	13-14, 21-22, 25-26, 37-38	27-36, 41-42

Check-in day for weekly occupancy: Saturday/Sunday.



### M Royal Oasis Club at Pueblo Quinta

Avenida Federico García Lorca, 8, Urb. Pueblo Quinta, Fase2, 29630 Benalmádena Costa del Sol, Málaga, Spain, **+34 952 56 34 79**

ACCOMMODATION	OCCUPANCY	LOW SEASON	MID SEASON	HIGH SEASON	PEAK SEASON
1 BDR	4/2	TIER 2	TIER 2	TIER 3	TIER 3
2 BDR	6/4	TIER 2	TIER 3	TIER 3	TIER 4
<b>2025 Weeks</b>		1-12, 46-50	13-14, 17-20, 23-24, 39-40, 43-45, 51-52	15-16, 21-22, 25-26, 37-38	27-36, 41-42
<b>2026 Weeks</b>		1-12, 46-50	15-20, 23-24, 39-40, 43-45, 51-52	13-14, 21-22, 25-26, 37-38	27-36, 41-42

Check-in day for weekly occupancy: Saturday.

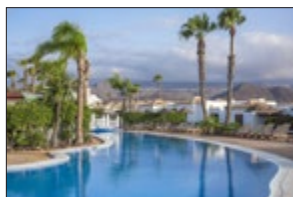


### M Royal Sunset Beach Club

Calle Londres Numero 6, Playa de Fanabe, 38660 Costa Adeje, Tenerife, Canary Islands, Spain, **+34 922 71 29 42**

ACCOMMODATION	OCCUPANCY	LOW SEASON	MID SEASON	HIGH SEASON	PEAK SEASON
Studio	2/2	-	TIER 2	TIER 2	TIER 3
1 BDR	4/2	-	TIER 2	TIER 3	TIER 3
1 BDR Elite	4/2	-	TIER 3	TIER 3	TIER 4
2 BDR	6/4	-	TIER 3	TIER 3	TIER 4
<b>2025 Weeks</b>		-	14, 17-20, 44-50	1-13, 21-25, 36-40, 43, 51-52	15-16, 26-35, 41-42
<b>2026 Weeks</b>		-	12, 17-20, 44-50	1-11, 15-16, 21-25, 36-40, 43, 51-52	13-14, 26-35, 41-42

Check-in day for weekly occupancy: Friday.



### M Royal Tenerife Country Club

Complejo San Andres, Calle San Andres, Golf del Sur, 38639 San Miguel de Abona, Tenerife, Canary Islands, Spain, **+34 922 73 83 02**

ACCOMMODATION	OCCUPANCY	LOW SEASON	MID SEASON	HIGH SEASON	PEAK SEASON
1 BDR	4/2	-	TIER 2	TIER 3	TIER 3
2 BDR	6/4	-	TIER 3	TIER 3	TIER 4
2 BDR Elite	6/4	-	TIER 3	TIER 4	TIER 4
<b>2025 Weeks</b>		-	14, 17-20, 44-50	1-13, 21-25, 36-40, 43, 51-52	15-16, 26-35, 41-42
<b>2026 Weeks</b>		-	12, 17-20, 44-50	1-11, 15-16, 21-25, 36-40, 43, 51-52	13-14, 26-35, 41-42

Check-in day for weekly occupancy: Friday.



### M Sahara Sunset

Avenida Rocío Jurado S/N, 29630 Benalmádena Costa, Málaga, Spain, **+34 952 44 02 58**

ACCOMMODATION	OCCUPANCY	LOW SEASON	MID SEASON	HIGH SEASON	PEAK SEASON
Studio	2/2	TIER 2	TIER 2	TIER 3	TIER 3
1 BDR	4/2	TIER 2	TIER 2	TIER 3	TIER 3
2 BDR	6/4	TIER 2	TIER 3	TIER 3	TIER 4
<b>2025 Weeks</b>		1-12, 46-50	13-14, 17-20, 23-24, 39-40, 43-45, 51-52	15-16, 21-22, 25-26, 37-38	27-36, 41-42
<b>2026 Weeks</b>		1-12, 46-50	15-20, 23-24, 39-40, 43-45, 51-52	13-14, 21-22, 25-26, 37-38	27-36, 41-42

Check-in day for weekly occupancy: Saturday.





### **M** Santa Barbara Golf and Ocean Club

Avd. Del Atlántico, Urb. Golf del Sur, 38639 San Miguel de Abona, Tenerife, Canary Islands, Spain, **+34 922 73 80 32**

ACCOMMODATION	OCCUPANCY	LOW SEASON	MID SEASON	HIGH SEASON	PEAK SEASON
Studio	2/2	-	TIER 2	TIER 3	TIER 3
1 BDR	4/2	-	TIER 3	TIER 3	TIER 4
1 BDR Family	4/2	-	TIER 3	TIER 3	TIER 4
1 BDR Elite	4/2	-	TIER 3	TIER 4	TIER 4
2 BDR	6/4	-	TIER 3	TIER 4	TIER 4
2 BDR Family	6/4	-	TIER 3	TIER 4	TIER 4
2 BDR Elite	6/4	-	TIER 4	TIER 4	TIER 5
3 BDR	8/6	-	TIER 4	TIER 4	TIER 5
3 BDR Elite	8/6	-	TIER 5	TIER 5	TIER 6
<b>2025 Weeks</b>		-	14, 17-20, 44-50	1-13, 21-25, 36-40, 43, 51-52	15-16, 26-35, 41-42
<b>2026 Weeks</b>		-	12, 17-20, 44-50	1-11, 15-16, 21-25, 36-40, 43, 51-52	13-14, 26-35, 41-42

Check-in day for weekly occupancy: Friday and Saturday.



### **M** Sunset Bay Club

Calle Antonio Navarro, 1, Urb. Torviscas Bajo, Playa de Las Americas, 38660 Adeje, Tenerife, Canary Islands, Spain,

**+34 922 71 42 00**

ACCOMMODATION	OCCUPANCY	LOW SEASON	MID SEASON	HIGH SEASON	PEAK SEASON
Studio	2/2	-	TIER 1	TIER 1	TIER 2
1 BDR	4/2	-	TIER 1	TIER 2	TIER 2
2 BDR	6/4	-	TIER 2	TIER 2	TIER 3
2 BDR Family	6/4	-	TIER 2	TIER 2	TIER 3
3 BDR	8/6	-	TIER 2	TIER 3	TIER 3
<b>2025 Weeks</b>		-	14, 17-20, 44-50	1-13, 21-25, 36-40, 43, 51-52	15-16, 26-35, 41-42
<b>2026 Weeks</b>		-	12, 17-20, 44-50	1-11, 15-16, 21-25, 36-40, 43, 51-52	13-14, 26-35, 41-42

Check-in day for weekly occupancy: Friday.



### **M** Sunset Harbour Club

Calle Valencia 3, Urb. Pueblo Torviscas 38660, Costa Adeje, Tenerife, Canary Islands, Spain, **+34 922 71 46 90**

ACCOMMODATION	OCCUPANCY	LOW SEASON	MID SEASON	HIGH SEASON	PEAK SEASON
Studio	2/2	-	TIER 2	TIER 2	TIER 3
1 BDR	4/2	-	TIER 2	TIER 3	TIER 3
2 BDR	6/4	-	TIER 3	TIER 3	TIER 4
<b>2025 Weeks</b>		-	14, 17-20, 44-50	1-13, 21-25, 36-40, 43, 51-52	15-16, 26-35, 41-42
<b>2026 Weeks</b>		-	12, 17-20, 44-50	1-11, 15-16, 21-25, 36-40, 43, 51-52	13-14, 26-35, 41-42

Check-in day for weekly occupancy: Friday.



### **M** Sunset View Club

Calle San Blas s/n, Golf del Sur, 38639 San Miguel De Abona, Tenerife, Canary Islands, Spain, **+34 922 73 87 63**

ACCOMMODATION	OCCUPANCY	LOW SEASON	MID SEASON	HIGH SEASON	PEAK SEASON
1 BDR	4/2	-	TIER 2	TIER 2	TIER 3
2 BDR	6/4	-	TIER 2	TIER 3	TIER 3
<b>2025 Weeks</b>		-	14, 17-20, 44-50	1-13, 21-25, 36-40, 43, 51-52	15-16, 26-35, 41-42
<b>2026 Weeks</b>		-	12, 17-20, 44-50	1-11, 15-16, 21-25, 36-40, 43, 51-52	13-14, 26-35, 41-42

Check-in day for weekly occupancy: Friday.



### **M** White Sands Beach Club

Via Ronda ZH3, Arenal D'en Castell, 07740 Es Mercadal, Menorca, Balearic Islands, Spain, **+34 971 35 80 75**

ACCOMMODATION	OCCUPANCY	LOW SEASON	MID SEASON	HIGH SEASON	PEAK SEASON
Studio	2/2	TIER 1	TIER 2	TIER 3	TIER 3
1 BDR	4/2	TIER 1	TIER 2	TIER 3	TIER 3
2 BDR	6/4	TIER 2	TIER 3	TIER 3	TIER 4
3 BDR	6/4	TIER 2	TIER 3	TIER 4	TIER 4
<b>2025 Weeks</b>		1-12, 46-50	13-14, 17-20, 23-24, 39-40, 43-45, 51-52	15-16, 21-22, 25-26, 37-38	27-36, 41-42
<b>2026 Weeks</b>		1-12, 46-50	15-20, 23-24, 39-40, 43-45, 51-52	13-14, 21-22, 25-26, 37-38	27-36, 41-42

Check-in day for weekly occupancy: Friday.

## SOUTH AFRICA

**Avalon Springs**Uitvlucht Str, Montagu, 6720 Western Cape, South Africa, **+27 23 614 1150**

ACCOMMODATION	OCCUPANCY	LOW SEASON	MID SEASON	HIGH SEASON	PEAK SEASON
1 BDR	4/2	-	TIER 2	TIER 3	TIER 3
2 BDR	6/4	-	TIER 3	TIER 4	TIER 4
<b>2025 Weeks</b>		-	14, 17-22, 32-33	7-13, 23-31, 34-38	1-6, 15-16, 39-52
<b>2026 Weeks</b>		-	17-22, 32-33	7-14, 23-31, 34-38	1-6, 15-16, 39-52

Check-in day for weekly occupancy: Friday.

**Breakers Resort**88 Lagoon Drive, Umhlanga Rocks, KwaZulu-Natal, 4319, South Africa, **+27 31 561 2271**

ACCOMMODATION	OCCUPANCY	LOW SEASON	MID SEASON	HIGH SEASON	PEAK SEASON
2 BDR	6/4	-	TIER 3	TIER 4	TIER 4
<b>2025 Weeks</b>		-	14, 17-22, 32-33	7-13, 23-31, 34-38	1-6, 15-16, 39-52
<b>2026 Weeks</b>		-	17-22, 32-33	7-14, 23-31, 34-38	1-6, 15-16, 39-52

Check-in day for weekly occupancy: Saturday.

**Champagne Sports Resort**R600 Champagne Valley, Winterton, 3340, South Africa, **+27 36 468 8000**

ACCOMMODATION	OCCUPANCY	LOW SEASON	MID SEASON	HIGH SEASON	PEAK SEASON
2 BDR	6/4	-	TIER 3	TIER 4	TIER 4
3 BDR	8/6	-	TIER 3	TIER 4	TIER 5
<b>2025 Weeks</b>		-	14, 17-22, 32-33	7-13, 23-31, 34-38	1-6, 15-16, 39-52
<b>2026 Weeks</b>		-	17-22, 32-33	7-14, 23-31, 34-38	1-6, 15-16, 39-52

Check-in day for weekly occupancy: Friday.

**The Peninsula**313 Beach Road, Sea Point 8060, Cape Town, South Africa, **+27 21 430 7777**

ACCOMMODATION	OCCUPANCY	LOW SEASON	MID SEASON	HIGH SEASON	PEAK SEASON
1 BDR	4/2	-	TIER 3	TIER 4	TIER 4
2 BDR	6/4	-	TIER 3	TIER 4	TIER 4
<b>2025 Weeks</b>		-	14, 17-22, 32-33	7-13, 23-31, 34-38	1-6, 15-16, 39-52
<b>2026 Weeks</b>		-	17-22, 32-33	7-14, 23-31, 34-38	1-6, 15-16, 39-52

Check-in day for weekly occupancy: Friday.

**Wilderness Dunes**N2 Highway, 6650 Wilderness, West Cape, South Africa, **+27 44 877 0221**

ACCOMMODATION	OCCUPANCY	LOW SEASON	MID SEASON	HIGH SEASON	PEAK SEASON
2 BDR	6/4	-	TIER 3	TIER 4	TIER 4
3 BDR	8/6	-	TIER 3	TIER 4	TIER 5
<b>2025 Weeks</b>		-	14, 17-22, 32-33	7-13, 23-31, 34-38	1-6, 15-16, 39-52
<b>2026 Weeks</b>		-	17-22, 32-33	7-14, 23-31, 34-38	1-6, 15-16, 39-52

Check-in day for weekly occupancy: Friday.

## INDONESIA

**Anantara Vacation Club at Avani Seminyak Bali**J.L. Drupadi No. 28, Seminyak, Bali 80361, Indonesia, **+62 361 737908**

ACCOMMODATION	OCCUPANCY	LOW SEASON	MID SEASON	HIGH SEASON	PEAK SEASON
1 BDR Pool Villa	2/2	-	-	TIER 6	TIER 6
2 BDR Pool Villa	6/4	-	-	TIER 6	TIER 6
<b>2025 Weeks</b>		-	-	10-25, 35-50	1-9, 26-34, 51-52
<b>2026 Weeks</b>		-	-	10-25, 35-50	1-9, 26-34, 51-52

Check-in day for weekly occupancy: Any day.

## THAILAND

**Anantara Vacation Club Bophut Koh Samui**99/9 Bophut Bay, Koh Samui, Surat Thani 84320, Thailand, **+66 77 428 300**

ACCOMMODATION	OCCUPANCY	LOW SEASON	MID SEASON	HIGH SEASON	PEAK SEASON
1 BDR Pool Suite	4/2	-	TIER 4	TIER 5	TIER 6
2 BDR Suite	4/4	-	TIER 5	TIER 6	TIER 6
2 BDR Pool Suite	4/2	-	TIER 6	TIER 6	TIER 6
<b>2025 Weeks</b>		-	17-25, 33-42	12-16, 26-32, 43-47	1-11, 48-52
<b>2026 Weeks</b>		-	17-25, 33-42	12-16, 26-32, 43-47	1-11, 48-52

Check-in day for weekly occupancy: Any day.

**Anantara Vacation Club Mai Khao Phuket**887 Moo 3, Tumbon Mai Khao, Thalang District, Phuket 83110, Thailand, **+66 76 337 200**

ACCOMMODATION	OCCUPANCY	LOW SEASON	MID SEASON	HIGH SEASON	PEAK SEASON
1 BDR Apartment Suite	4/2	-	TIER 5	TIER 6	TIER 6
1 BDR Pool Villa	4/2	-	TIER 6	TIER 6	TIER 6
2 BDR Apartment Suite	6/4	-	TIER 6	TIER 6	TIER 6
2 BDR Pool Villa	6/4	-	TIER 6	TIER 6	TIER 6
<b>2025 Weeks</b>		-	17-25, 33-42	12-16, 26-32, 43-47	1-11, 48-52
<b>2026 Weeks</b>		-	17-25, 33-42	12-16, 26-32, 43-47	1-11, 48-52

Check-in day for weekly occupancy: Any day.

## AUSTRALIA

**Bellbrae Country Club**10 Woodacres Road, Bellbrae VIC 3228, Australia, **+61 3 5261 5167**

ACCOMMODATION	OCCUPANCY	LOW SEASON	MID SEASON	HIGH SEASON	PEAK SEASON
1 BDR	4/2	-	TIER 5	TIER 5	TIER 6
2 BDR	6/4	-	TIER 6	TIER 6	TIER 6
<b>2025 Weeks</b>		-	21-25, 28-37	6-9, 11-13, 16, 26-27, 38-44, 47-51	1-5, 10, 14-15, 17-20, 45-46, 52
<b>2026 Weeks</b>		-	21-25, 28-37	6-9, 11-13, 16, 26-27, 38-44, 47-51	1-5, 10, 14-15, 17-20, 45-46, 52

Check-in day for weekly occupancy: Friday.

**Mount Martha Valley Resort**10c Country Club Drive, Safety Beach VIC 3936, Australia, **+61 3 5987 0872**

ACCOMMODATION	OCCUPANCY	LOW SEASON	MID SEASON	HIGH SEASON	PEAK SEASON
1 BDR	4/2	-	TIER 4	TIER 4	TIER 6
2 BDR	6/4	-	TIER 5	TIER 6	TIER 6
<b>2025 Weeks</b>		-	21-25, 28-37	6-9, 11-13, 16, 26-27, 38-44, 47-51	1-5, 10, 14-15, 17-20, 45-46, 52
<b>2026 Weeks</b>		-	21-25, 28-37	6-9, 11-13, 16, 26-27, 38-44, 47-51	1-5, 10, 14-15, 17-20, 45-46, 52

Check-in day for weekly occupancy: Friday.

**Tamarind Sands**49 Tamarind Avenue, Cabarita Beach NSW 2488, Australia, **+61 2 6676 3255**

ACCOMMODATION	OCCUPANCY	LOW SEASON	MID SEASON	HIGH SEASON	PEAK SEASON
1 BDR	4/2	-	TIER 5	TIER 6	TIER 6
2 BDR	6/4	-	TIER 6	TIER 6	TIER 6
<b>2025 Weeks</b>		-	15, 17-35	1-2, 5-14, 16, 36-49	3-4, 50-52
<b>2026 Weeks</b>		-	15, 17-35	1-2, 5-14, 16, 36-49	3-4, 50-52

Check-in day for weekly occupancy: Friday.

## NEW ZEALAND

**Anantara Vacation Club at Oaks Shores Queenstown**327-343 Frankton Road, Queenstown, 9300 New Zealand, **+64 3 450 0005**

ACCOMMODATION	OCCUPANCY	LOW SEASON	MID SEASON	HIGH SEASON	PEAK SEASON
Studio	2/2	TIER 2	TIER 3	TIER 3	TIER 5
2 BDR Suite	4/4	TIER 4	TIER 5	TIER 6	TIER 6
<b>2025 Weeks</b>		17-24	15, 25, 39-41	13-14, 16, 26-29, 32-38, 42-52	1-12, 30-31
<b>2026 Weeks</b>		17-24	15, 25, 39-41	13-14, 16, 26-29, 32-38, 42-52	1-12, 30-31

Check-in day for weekly occupancy: Any day.



# Featured Resorts



**Grand Pacific Resort at Carlsbad Inn**  
Carlsbad, CA



**The Grand Mayan Nuevo Vallarta**  
Nuevo Vallarta, MX



**Jaco Beach Premium Towers**  
Jaco, CR



**The Pines at Sunriver**  
Sunriver, OR



**Anantara Vacation Club Phuket Mai Khao**  
Phuket, Thailand



**Grand Pacific at Coronado**  
Coronado, CA



**The Grand Mayan Riviera Maya**  
Playa del Carmen, MX



**Fort Lauderdale Beach Resort SND**  
Fort Lauderdale, FL



**VI at Homestead**  
Lynden, WA



**Ocean Club Resort FHG**  
North Myrtle Beach, SC

# 2025 Weeks Calendar

WK	FRI	SAT	SUN	MON	TUES	WED	THU
01	03-Jan	04-Jan	05-Jan	06-Jan	07-Jan	08-Jan	09-Jan
02	10-Jan	11-Jan	12-Jan	13-Jan	14-Jan	15-Jan	16-Jan
03	17-Jan	18-Jan	19-Jan	20-Jan	21-Jan	22-Jan	23-Jan
04	24-Jan	25-Jan	26-Jan	27-Jan	28-Jan	29-Jan	30-Jan
05	31-Jan	01-Feb	02-Feb	03-Feb	04-Feb	05-Feb	06-Feb
06	07-Feb	08-Feb	09-Feb	10-Feb	11-Feb	12-Feb	13-Feb
07	14-Feb	15-Feb	16-Feb	17-Feb	18-Feb	19-Feb	20-Feb
08	21-Feb	22-Feb	23-Feb	24-Feb	25-Feb	26-Feb	27-Feb
09	28-Feb	01-Mar	02-Mar	03-Mar	04-Mar	05-Mar	06-Mar
10	07-Mar	08-Mar	09-Mar	10-Mar	11-Mar	12-Mar	13-Mar
11	14-Mar	15-Mar	16-Mar	17-Mar	18-Mar	19-Mar	20-Mar
12	21-Mar	22-Mar	23-Mar	24-Mar	25-Mar	26-Mar	27-Mar
13	28-Mar	29-Mar	30-Mar	31-Mar	01-Apr	02-Apr	03-Apr
14	04-Apr	05-Apr	06-Apr	07-Apr	08-Apr	09-Apr	10-Apr
15	11-Apr	12-Apr	13-Apr	14-Apr	15-Apr	16-Apr	17-Apr
16	18-Apr	19-Apr	20-Apr	21-Apr	22-Apr	23-Apr	24-Apr
17	25-Apr	26-Apr	27-Apr	28-Apr	29-Apr	30-Apr	01-May
18	02-May	03-May	04-May	05-May	06-May	07-May	08-May
19	09-May	10-May	11-May	12-May	13-May	14-May	15-May
20	16-May	17-May	18-May	19-May	20-May	21-May	22-May
21	23-May	24-May	25-May	26-May	27-May	28-May	29-May
22	30-May	31-May	01-Jun	02-Jun	03-Jun	04-Jun	05-Jun
23	06-Jun	07-Jun	08-Jun	09-Jun	10-Jun	11-Jun	12-Jun
24	13-Jun	14-Jun	15-Jun	16-Jun	17-Jun	18-Jun	19-Jun
25	20-Jun	21-Jun	22-Jun	23-Jun	24-Jun	25-Jun	26-Jun
26	27-Jun	28-Jun	29-Jun	30-Jun	01-Jul	02-Jul	03-Jul
27	04-Jul	05-Jul	06-Jul	07-Jul	08-Jul	09-Jul	10-Jul
28	11-Jul	12-Jul	13-Jul	14-Jul	15-Jul	16-Jul	17-Jul
29	18-Jul	19-Jul	20-Jul	21-Jul	22-Jul	23-Jul	24-Jul
30	25-Jul	26-Jul	27-Jul	28-Jul	29-Jul	30-Jul	31-Jul
31	01-Aug	02-Aug	03-Aug	04-Aug	05-Aug	06-Aug	07-Aug
32	08-Aug	09-Aug	10-Aug	11-Aug	12-Aug	13-Aug	14-Aug
33	15-Aug	16-Aug	17-Aug	18-Aug	19-Aug	20-Aug	21-Aug
34	22-Aug	23-Aug	24-Aug	25-Aug	26-Aug	27-Aug	28-Aug
35	29-Aug	30-Aug	31-Aug	01-Sep	02-Sep	03-Sep	04-Sep
36	05-Sep	06-Sep	07-Sep	08-Sep	09-Sep	10-Sep	11-Sep
37	12-Sep	13-Sep	14-Sep	15-Sep	16-Sep	17-Sep	18-Sep
38	19-Sep	20-Sep	21-Sep	22-Sep	23-Sep	24-Sep	25-Sep
39	26-Sep	27-Sep	28-Sep	29-Sep	30-Sep	01-Oct	02-Oct
40	03-Oct	04-Oct	05-Oct	06-Oct	07-Oct	08-Oct	09-Oct
41	10-Oct	11-Oct	12-Oct	13-Oct	14-Oct	15-Oct	16-Oct
42	17-Oct	18-Oct	19-Oct	20-Oct	21-Oct	22-Oct	23-Oct
43	24-Oct	25-Oct	26-Oct	27-Oct	28-Oct	29-Oct	30-Oct
44	31-Oct	01-Nov	02-Nov	03-Nov	04-Nov	05-Nov	06-Nov
45	07-Nov	08-Nov	09-Nov	10-Nov	11-Nov	12-Nov	13-Nov
46	14-Nov	15-Nov	16-Nov	17-Nov	18-Nov	19-Nov	20-Nov
47	21-Nov	22-Nov	23-Nov	24-Nov	25-Nov	26-Nov	27-Nov
48	28-Nov	29-Nov	30-Nov	01-Dec	02-Dec	03-Dec	04-Dec
49	05-Dec	06-Dec	07-Dec	08-Dec	09-Dec	10-Dec	11-Dec
50	12-Dec	13-Dec	14-Dec	15-Dec	16-Dec	17-Dec	18-Dec
51	19-Dec	20-Dec	21-Dec	22-Dec	23-Dec	24-Dec	25-Dec
52	26-Dec	27-Dec	28-Dec	29-Dec	30-Dec	31-Dec	01-Jan

# 2026 Weeks Calendar

WK	FRI	SAT	SUN	MON	TUES	WED	THU
01	02-Jan	03-Jan	04-Jan	05-Jan	06-Jan	07-Jan	08-Jan
02	09-Jan	10-Jan	11-Jan	12-Jan	13-Jan	14-Jan	15-Jan
03	16-Jan	17-Jan	18-Jan	19-Jan	20-Jan	21-Jan	22-Jan
04	23-Jan	24-Jan	25-Jan	26-Jan	27-Jan	28-Jan	29-Jan
05	30-Jan	31-Jan	01-Feb	02-Feb	03-Feb	04-Feb	05-Feb
06	06-Feb	07-Feb	08-Feb	09-Feb	10-Feb	11-Feb	12-Feb
07	13-Feb	14-Feb	15-Feb	16-Feb	17-Feb	18-Feb	19-Feb
08	20-Feb	21-Feb	22-Feb	23-Feb	24-Feb	25-Feb	26-Feb
09	27-Feb	28-Feb	01-Mar	02-Mar	03-Mar	04-Mar	05-Mar
10	06-Mar	07-Mar	08-Mar	09-Mar	10-Mar	11-Mar	12-Mar
11	13-Mar	14-Mar	15-Mar	16-Mar	17-Mar	18-Mar	19-Mar
12	20-Mar	21-Mar	22-Mar	23-Mar	24-Mar	25-Mar	26-Mar
13	27-Mar	28-Mar	29-Mar	30-Mar	31-Mar	01-Apr	02-Apr
14	03-Apr	04-Apr	05-Apr	06-Apr	07-Apr	08-Apr	09-Apr
15	10-Apr	11-Apr	12-Apr	13-Apr	14-Apr	15-Apr	16-Apr
16	17-Apr	18-Apr	19-Apr	20-Apr	21-Apr	22-Apr	23-Apr
17	24-Apr	25-Apr	26-Apr	27-Apr	28-Apr	29-Apr	30-Apr
18	01-May	02-May	03-May	04-May	05-May	06-May	07-May
19	08-May	09-May	10-May	11-May	12-May	13-May	14-May
20	15-May	16-May	17-May	18-May	19-May	20-May	21-May
21	22-May	23-May	24-May	25-May	26-May	27-May	28-May
22	29-May	30-May	31-May	01-Jun	02-Jun	03-Jun	04-Jun
23	05-Jun	06-Jun	07-Jun	08-Jun	09-Jun	10-Jun	11-Jun
24	12-Jun	13-Jun	14-Jun	15-Jun	16-Jun	17-Jun	18-Jun
25	19-Jun	20-Jun	21-Jun	22-Jun	23-Jun	24-Jun	25-Jun
26	26-Jun	27-Jun	28-Jun	29-Jun	30-Jun	01-Jul	02-Jul
27	03-Jul	04-Jul	05-Jul	06-Jul	07-Jul	08-Jul	09-Jul
28	10-Jul	11-Jul	12-Jul	13-Jul	14-Jul	15-Jul	16-Jul
29	17-Jul	18-Jul	19-Jul	20-Jul	21-Jul	22-Jul	23-Jul
30	24-Jul	25-Jul	26-Jul	27-Jul	28-Jul	29-Jul	30-Jul
31	31-Jul	01-Aug	02-Aug	03-Aug	04-Aug	05-Aug	06-Aug
32	07-Aug	08-Aug	09-Aug	10-Aug	11-Aug	12-Aug	13-Aug
33	14-Aug	15-Aug	16-Aug	17-Aug	18-Aug	19-Aug	20-Aug
34	21-Aug	22-Aug	23-Aug	24-Aug	25-Aug	26-Aug	27-Aug
35	28-Aug	29-Aug	30-Aug	31-Aug	01-Sep	02-Sep	03-Sep
36	04-Sep	05-Sep	06-Sep	07-Sep	08-Sep	09-Sep	10-Sep
37	11-Sep	12-Sep	13-Sep	14-Sep	15-Sep	16-Sep	17-Sep
38	18-Sep	19-Sep	20-Sep	21-Sep	22-Sep	23-Sep	24-Sep
39	25-Sep	26-Sep	27-Sep	28-Sep	29-Sep	30-Sep	01-Oct
40	02-Oct	03-Oct	04-Oct	05-Oct	06-Oct	07-Oct	08-Oct
41	09-Oct	10-Oct	11-Oct	12-Oct	13-Oct	14-Oct	15-Oct
42	16-Oct	17-Oct	18-Oct	19-Oct	20-Oct	21-Oct	22-Oct
43	23-Oct	24-Oct	25-Oct	26-Oct	27-Oct	28-Oct	29-Oct
44	30-Oct	31-Oct	01-Nov	02-Nov	03-Nov	04-Nov	05-Nov
45	06-Nov	07-Nov	08-Nov	09-Nov	10-Nov	11-Nov	12-Nov
46	13-Nov	14-Nov	15-Nov	16-Nov	17-Nov	18-Nov	19-Nov
47	20-Nov	21-Nov	22-Nov	23-Nov	24-Nov	25-Nov	26-Nov
48	27-Nov	28-Nov	29-Nov	30-Nov	01-Dec	02-Dec	03-Dec
49	04-Dec	05-Dec	06-Dec	07-Dec	08-Dec	09-Dec	10-Dec
50	11-Dec	12-Dec	13-Dec	14-Dec	15-Dec	16-Dec	17-Dec
51	18-Dec	19-Dec	20-Dec	21-Dec	22-Dec	23-Dec	24-Dec
52	25-Dec	26-Dec	27-Dec	28-Dec	29-Dec	30-Dec	31-Dec

