



# Premiere Club Connection

2014-2015

DIAMOND RESORTS  
INTERNATIONAL<sup>®</sup>

Explore  
more



# Premiere Club Connection

Uplifting and inspiring, the Premiere Club Connection provides you with an internal exchange and member benefits program.

Premiere Club Connection, with its seaside journeys, desert escapes and mountain, city and country retreats, provides you with the opportunity to vacation in your comfort zone or experience something new and exciting at a variety of resorts in destinations throughout the United States, Mexico and Europe.

## Flexible points opportunities

- Book flexible stays; stay for more than 7 nights or as few as 2 nights
- Access 27 additional resorts with no internal exchange fees
- 13 month advance booking window for Home Collection Resorts
- 10 month advance booking window for Club Affiliated resorts
- Save and borrow points
- Member discounts and offers



# Contact Information

## HOURS OF OPERATION & HOLIDAY SCHEDULE

*The call center will be closed on the following public holidays*

New Year's Day (Observed) .....	Wednesday, January 1, 2014
President's Day.....	Monday, February 17, 2014
Memorial Day.....	Monday, May 26, 2014
Independence Day.....	Friday, July 4, 2014
Labor Day .....	Monday, September 1, 2014
Veteran's Day.....	Tuesday, November 11, 2014
Thanksgiving .....	Thursday, November 27, 2014
.....	Friday, November 28, 2014
Christmas.....	Thursday, December 25, 2014

## E-MAIL

[THEClub@diamondresorts.com](mailto:THEClub@diamondresorts.com)

## ONLINE

[DiamondResorts.com](http://DiamondResorts.com)

## MEMBER SERVICES

Monday - Friday 6:00 a.m. - 7:00 p.m. (PST)  
Saturday 7:00 a.m. - 5:00 p.m. (PST)  
Phone 1.877.DRI.CLUB (1.877.374.2582)  
Fax 1.702.765.8715

Payments can be made through our automated phone system 24-hours a day at 1.877.DRI.CLUB

## SOCIAL MEDIA



[Facebook.com/DiamondResortsInternational](https://www.facebook.com/DiamondResortsInternational)



[Twitter.com/DiamondResorts](https://twitter.com/DiamondResorts)



[Pinterest.com/DiamondResorts](https://www.pinterest.com/DiamondResorts)



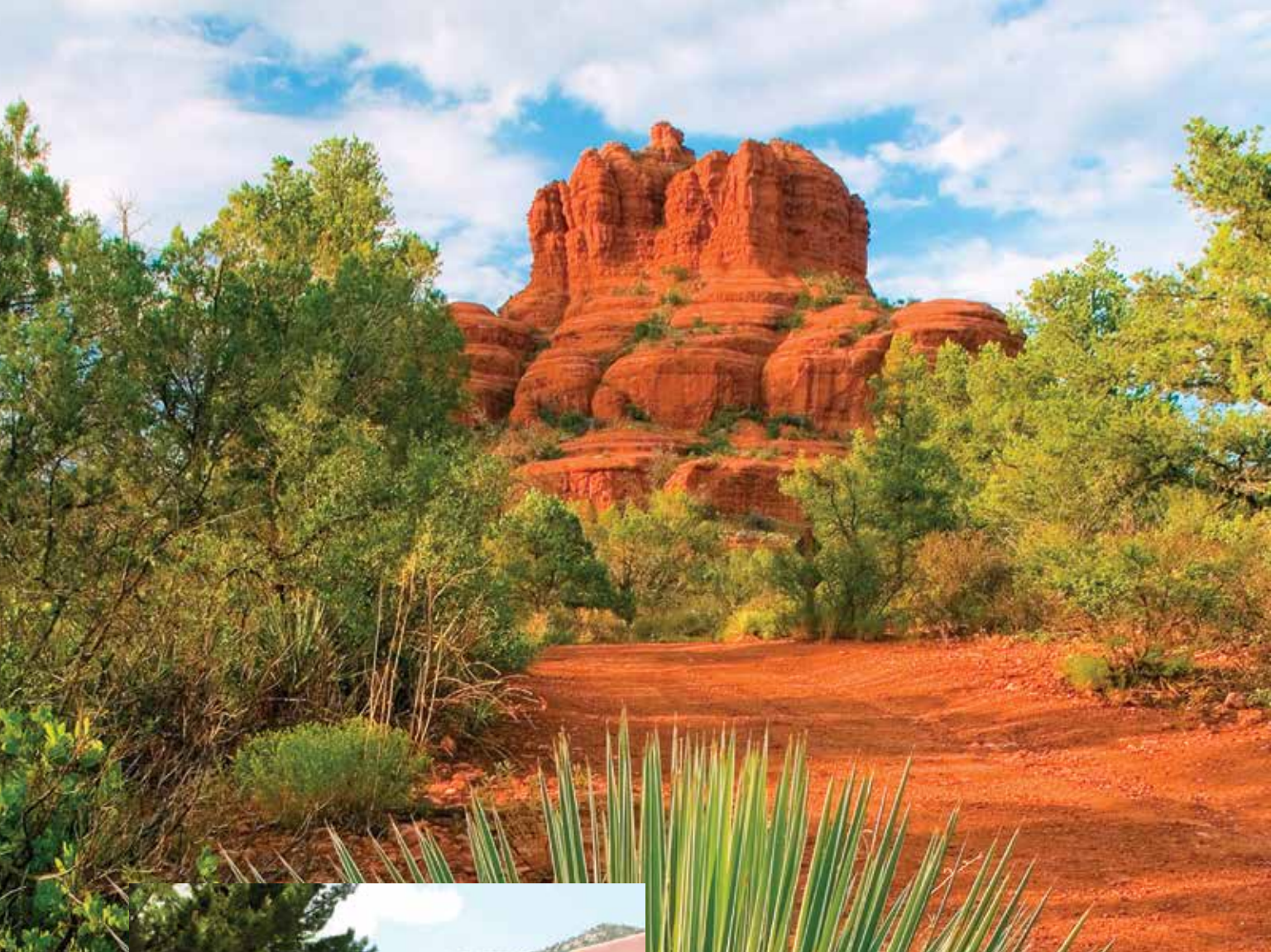
[Foursquare.com](https://www.foursquare.com)

# Resort Exchange Access

Arizona	Bell Rock Inn* .....	6
	Kohl's Ranch Lodge* .....	8
	Los Abrigados Resort & Spa* .....	10
	Rancho Mañana Resort* .....	12
	Scottsdale Camelback Resort* .....	14
	Scottsdale Links Resort .....	16
	Scottsdale Villa Mirage .....	18
	The Roundhouse Resort* .....	20
	PVC at The Roundhouse Resort* .....	22
	Varsity Clubs of America - Tucson* .....	24
California	Lake Tahoe Vacation Resort .....	26
Colorado	The Historic Crags Lodge* .....	28
Florida	Cypress Pointe Resort .....	30
	Daytona Beach Regency .....	32
	Grand Beach .....	34
	Grande Villas Resort .....	36
Indiana	Varsity Clubs of America - South Bend* .....	38
Missouri	The Suites at Fall Creek .....	40
Nevada	Desert Paradise Resort .....	42
	Polo Towers Suites .....	44
	Polo Towers Villas .....	46
	The Carriage House* .....	48
Tennessee	Bent Creek Golf Village .....	50
Virginia	The Historic Powhatan Resort .....	52
Mexico	Sea of Cortez Beach Club* .....	54
Caribbean	Flamingo Beach Resort .....	56
England	Broome Park Golf and Country Club .....	58
	Pine Lake Resort .....	60
	Thurnham Hall .....	62
	Woodford Bridge Country Club .....	64
	Wychnor Park Country Club .....	66
Ireland	East Clare Golf Village .....	68
Portugal	Vilar Do Golf .....	70
Scotland	The Kenmore Club .....	72
Spain, Balearic Islands	Garden Lago .....	74
Spain, Canary Islands	Club Del Carmen .....	76
	Jardines Del Sol .....	78
	Royal Sunset Beach Club .....	80
Spain, Costa Del Sol	Los Amigos Beach Club .....	82
	Sahara Sunset .....	84
	A guide to membership .....	86
	Weeks calendars 2014-2015 .....	90

\* Home Collection Resort 13 month booking window





*A Home Collection Resort*

## Bell Rock Inn

6246 State Route 179  
Sedona, Arizona 86351  
United States  
1.928.282.4161

Bell Rock Inn is framed by extraordinary views along the Red Rock Scenic Byway with its sandstone formations and rich red landscape of Arizona's backcountry. Plan a poolside barbeque or entertain friends and family in spacious comfort complete with in-suite fireplaces. Set amid the natural beauty of Sedona, Arizona, Bell Rock Inn is laidback and friendly and provides easy access to the sights, sounds and wonder of the Coconino National Forest.

Activities abound in Sedona and Oak Creek. So whether you are looking for that ultimate hike or extreme trail thrill, you will find a variety of mountains and canyons to explore as well as lakes, creeks and streams to plan a day's worth of excitement from backcountry tours to horseback riding and more.

Sedona affords visitors a relaxing oasis and Bell Rock Inn is a retreat nestled in its foothills.

#### POINTS VALUES

ACCOMMODATION	MAX/PRIVATE OCCUPANCY	LOW SEASON	MID SEASON	HIGH SEASON	PEAK SEASON
Studio Efficiency	4/2	-	2,000	2,500	3,500
Studio	4/2	-	2,500	3,500	4,500
1 BDR	4/4	-	3,500	5,000	6,000
2 BDR	6/6	-	5,000	7,000	8,000
<b>2014 WEEKS</b>	-	-	1-3, 47, 49-50	4-15, 18-26, 28-46	16-17, 27, 48, 51-52
<b>2015 WEEKS</b>	-	-	1-3, 47, 49-50	4-13, 16-26, 28-46	14-15, 27, 48, 51-52

Nightly midweek rates are 10% of week rate. Check-in day for weekly occupancy: Friday / Saturday / Sunday.

Note: Book from 13 months prior to arrival.

#### SERVICES AND AMENITIES

- BBQ areas
- Coffee maker
- Fireplace in select units
- Hair dryer
- Heated pools
- Jetted spa
- Microwave
- Mini refrigerator
- Pet rooms
- Private patio

#### NEARBY ATTRACTIONS

- Backcountry tours
- Bi-Plane adventures
- Casino
- Farmers Market
- Fishing
- Golf
- Helicopter rides
- Hiking
- Horseback riding
- Hot air ballooning
- Mini-golf
- Museums
- Native American ruins
- Shopping
- State/National parks
- Theater







*A Home Collection Resort*

# Kohl's Ranch Lodge

202 South Kohl's Ranch Lodge Road  
Payson, Arizona 85541  
United States  
1.928.478.4211



Located on the Banks of Tonto Creek in the largest Ponderosa Pine Forest in the world, Kohl's Ranch Lodge is historically famous for its western hospitality.

Kohl's Ranch Lodge is in Payson, Arizona, at the base of the Mogollon Rim in the area that author Zane Grey made famous with his popular adventures of the Old West. The friendly and casual atmosphere of Kohl's Ranch Lodge make each stay an inviting experience where guests can enjoy a classic stay in Arizona's backcountry.

Fresh mountain air, moderate year-round temperatures and activities ranging from exhilarating backcountry tours, hiking, mountainside horseback riding and trout fishing to lazy creek-side strolls are all available from your comfortable Kohl's Ranch Lodge mountain getaway.

#### POINTS VALUES

ACCOMMODATION	MAX/PRIVATE OCCUPANCY	LOW SEASON	MID SEASON	HIGH SEASON	PEAK SEASON
Studio Efficiency	2/2	-	2,500	3,500	4,000
Studio	2/2	-	3,500	4,000	5,000
1 BDR	4/2	-	5,000	6,000	7,000
2 BDR	4/4	-	5,500	7,000	9,000
2 BDR Cabin	6/2	-	6,500	8,000	10,000
2 BDR Deluxe Cabin	8/4	-	8,500	10,500	12,000
The Horton House	8/4	-	18,500	20,500	22,500
<b>2014 WEEKS</b>		-	1-7, 48-50	8-12, 14-15, 18-21, 23-24, 28-30, 32-34, 36-38, 42-46	13, 16-17, 22, 25-27, 31, 35, 39-41, 47, 51-52
<b>2015 WEEKS</b>		-	1-7, 48-50	8-12, 16-21, 23-24, 28-30, 32-35, 37-38, 42-46	13-15, 22, 25-27, 31, 36, 39-41, 47, 51-52

Nightly midweek rates are 10% of week rate. Check-in day for weekly occupancy: Friday / Saturday / Sunday.

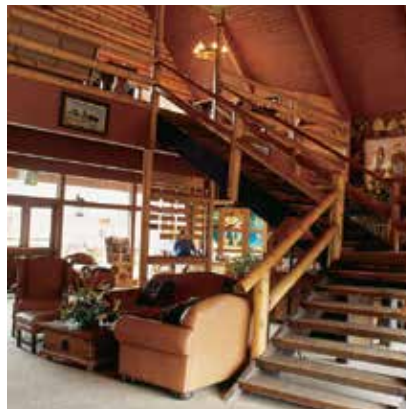
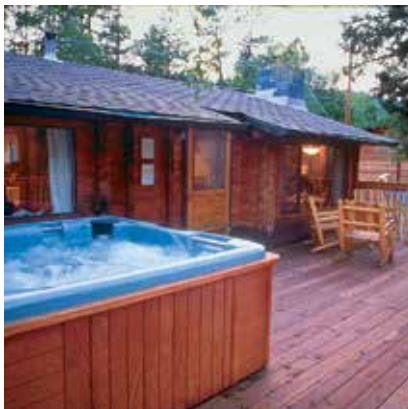
Note: Book from 13 months prior to arrival.

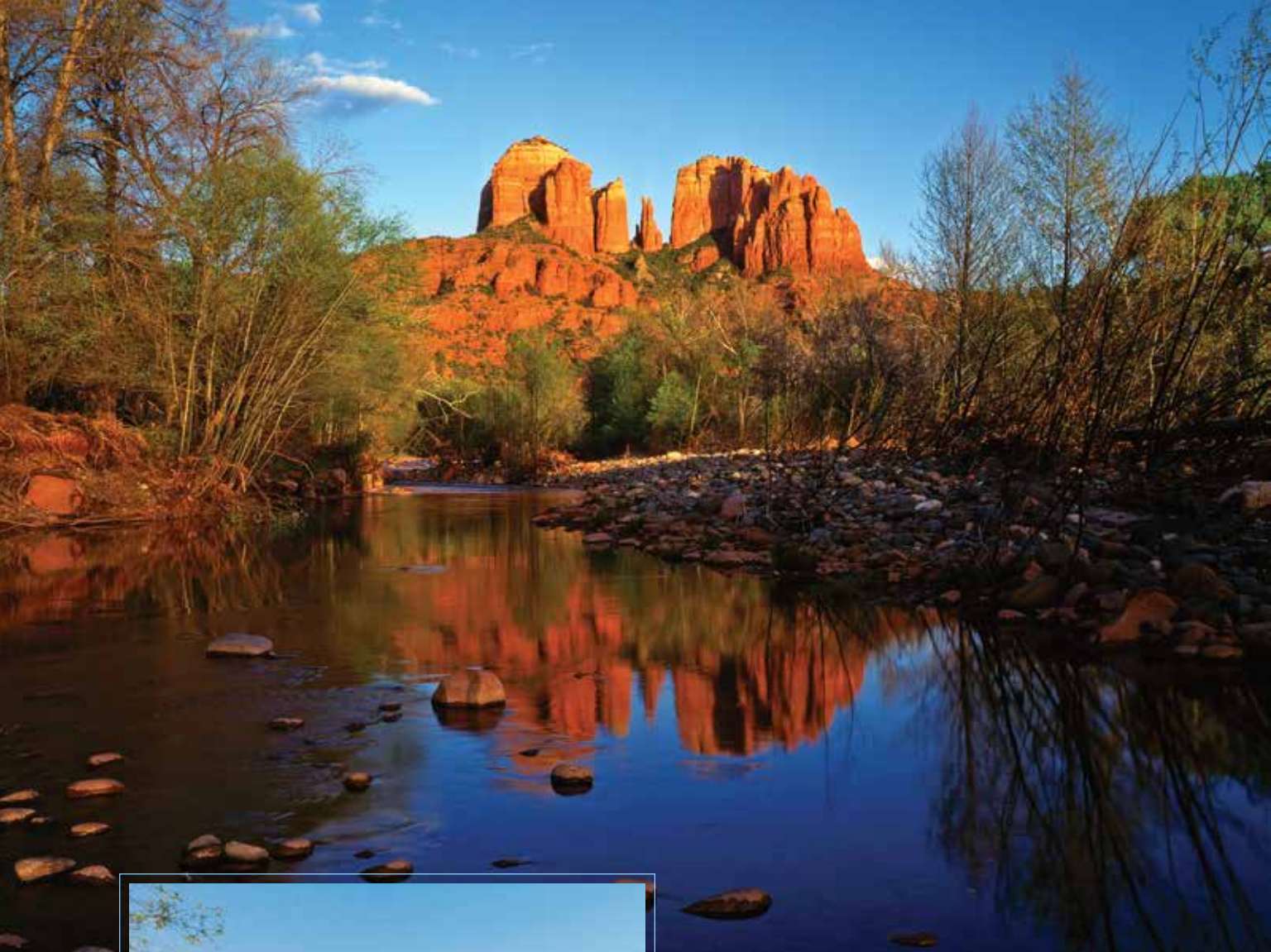
#### SERVICES AND AMENITIES

- Bar/Lounge
- Bocce ball
- Coffee maker
- Dishwasher
- Fireplace in select units
- Jetted spa
- King size bed
- Kitchen area
- Microwave
- Pet club
- Pet rooms
- Private patio/porch
- Refrigerator
- Restaurant
- TV
- Yoga

#### NEARBY ATTRACTIONS

- Backcountry tours
- Casino
- Fishing
- Hiking
- Horseback riding
- Museums
- Shopping
- State/National parks





*A Home Collection Resort*

# Los Abrigados Resort & Spa

160 Portal Lane  
Sedona, Arizona 86336  
United States  
1.928.282.1777

Los Abrigados Resort & Spa is nestled against the banks of the famous Oak Creek in Sedona, Arizona, and rests upon twenty-two acres filled with winding walkways, cascading fountains and shady nooks in the foothills of Arizona's Red Rock Country. Conveniently located just past the Tlaquepaque Arts & Crafts Village, Los Abrigados Resort & Spa is within walking distance to many restaurants, galleries, shops and hiking trails. From the scenic and quaint Oak Creek to the stunning red rock formations and new age energy of Sedona, Los Abrigados Resort & Spa provides a comfortable, quiet and relaxing selection of accommodation styles with easy access for outdoor enthusiasts looking for adventure and activities including horseback riding, hiking, helicopter rides, backcountry tours and more.

### POINTS VALUES

ACCOMMODATION	MAX./PRIVATE OCCUPANCY	LOW SEASON	MID SEASON	HIGH SEASON	PEAK SEASON
Studio Efficiency*	2/2	-	2,000	3,000	4,000
1 BDR	4/2	-	5,000	6,500	8,500
1 BDR Family	6/2	-	6,000	7,000	9,000
1 BDR Deluxe	4/2	-	6,500	7,500	9,500
2 BDR	6/4	-	8,000	10,000	13,000
2 BDR Family	8/4	-	8,500	10,500	13,500
2 BDR Deluxe	6/6	-	10,000	12,000	15,000
2 BDR Suite**	6/6	-	10,500	12,500	15,500
The Morris House*	6/4	-	15,500	16,500	18,500
The Celebrity House	6/4	-	15,500	16,500	18,500
The Stone House	6/4	-	18,500	20,500	22,500
<b>2014 WEEKS</b>	-	-	1-3, 47, 49-50	4-15, 18-26, 28-46	16-17, 27, 48, 51-52
<b>2015 WEEKS</b>	-	-	1-3, 47, 49-50	4-13, 16-26, 28-46	14-15, 27, 48, 51-52

Nightly midweek rates are 10% of week rate. Check-in day for weekly occupancy: Friday / Saturday / Sunday. No elevator. \*Previously known as The Inn at Los Abrigados. \*\*Previously known as Winners Circle.

Note: Book from 13 months prior to arrival.



### SERVICES AND AMENITIES

- Banquet facilities
- Basketball court
- BBQ area
- Beauty Salon
- Concierge
- Fitness center
- Gas fireplace in select units
- Gift shop
- Horseshoe pit
- Jetted spa
- King size bed
- Kitchen
- Large-screen televisions
- Meeting facilities
- Patio balcony
- Pool table
- Swimming pools
- Tennis courts
- Whirlpool
- WiFi

### NEARBY ATTRACTIONS

- Antique shops
- Art galleries
- Backcountry tours
- Bi-Plane adventures
- Bocce ball
- Casino
- Farmers Market
- Fishing
- Golf
- Helicopter rides
- Hiking
- Horseback riding
- Hot air ballooning
- Mini-golf
- Museums
- Shopping
- State/National parks
- Theater





*A Home Collection Resort*

## Rancho Mañana Resort

5720 East Rancho Mañana Boulevard  
Cave Creek, Arizona 85331  
United States  
1.480.575.7900

Set in the high desert of Arizona, Rancho Mañana Resort provides guests with breathtaking mountain views. This secluded retreat features spacious two-bedroom accommodations, each with a gourmet kitchen, two full master suites and elegant Western decor. Guests can relax poolside or play golf at the adjacent championship Rancho Mañana Golf Club. Visit Tonto Bar and Grill for delicious meals and drinks. The charming town of Cave Creek, plus the shops, restaurants and galleries of neighboring Carefree and sporting activities and cultural events in Phoenix, add up to a first rate vacation experience.

### POINTS VALUES

ACCOMMODATION	MAX/PRIVATE OCCUPANCY	LOW SEASON	MID SEASON	HIGH SEASON	PEAK SEASON
2 BDR	4/4	-	8,000	10,000	13,000
2 BDR Golf Course View	4/4	-	8,500	10,500	13,500
2 BDR Family	6/4	-	8,500	10,500	13,500
<b>2014 WEEKS</b>	-	1-3, 47, 49-50	4-15, 18-26, 28-46	16-17, 27, 48, 51-52	
<b>2015 WEEKS</b>	-	1-3, 47, 49-50	4-13, 16-26, 28-46	14-15, 27, 48, 51-52	

Nightly midweek rates are 10% of week rate. Check-in day for weekly occupancy: Friday / Saturday / Sunday. No elevator.

Note: Book from 13 months prior to arrival.

### SERVICES AND AMENITIES

- BBQ area
- Beauty salon
- Driving range
- Golf course
- Outdoor fireplaces
- Swimming pool
- Pro shop
- Putting greens
- Restaurant
- Whirlpool spas

### NEARBY ATTRACTIONS

- Rancho Mañana Golf Club
- State parks







*A Home Collection Resort*

# Scottsdale Camelback Resort

6302 East Camelback Road  
Scottsdale, Arizona 85251  
United States  
1.480.947.3300



Located at the foot of the famed Camelback Mountain, the Scottsdale Camelback Resort is a picture-perfect destination for family vacations, romantic weekend getaways, small business retreats, intimate celebrations and more. From the well-appointed villas, to meticulously manicured grounds and plentiful amenities, the elegant villas provide you with all the comforts of home to make your stay relaxing and memorable.

### POINTS VALUES

ACCOMMODATION	MAX/PRIVATE OCCUPANCY	LOW SEASON	MID SEASON	HIGH SEASON	PEAK SEASON
Studio Deluxe	4/2	-	4,000	5,000	7,000
2 BDR	6/4	-	6,000	8,000	9,500
2 BDR Deluxe	6/4	-	6,500	8,500	10,000
3 BDR Suite	8/6	-	12,500	14,500	16,500
<b>2014 WEEKS</b>	-	-	1-3, 47, 49-50	4-15, 18-26, 28-46	16-17, 27, 48, 51-52
<b>2015 WEEKS</b>	-	-	1-3, 47, 49-50	4-13, 16-26, 28-46	14-15, 27, 48, 51-52

Weekly stays only. Check-in day for weekly occupancy: Friday / Saturday / Sunday. No elevator.

Note: Book from 13 months prior to arrival.

### SERVICES AND AMENITIES

- Balcony/Terrace
- Basketball
- BBQ area
- Concierge assistance
- Croquet
- Fireplace
- Fitness center/centre
- Indoor/Outdoor pools
- Jetted spa
- Kitchen
- Laundry facilities
- Racquetball
- Sauna
- Spa
- Tennis

### NEARBY ATTRACTIONS

- Bars/Restaurants
- Bike rentals
- Boating
- Casinos
- Golf
- Grocery store
- Hiking
- Historic sites
- Horseback riding
- Mini-golf
- Mountain biking
- Museums
- Nightlife
- Pro shop
- Racquetball courts
- River rafting
- Rivers
- Shopping
- Shows/Theatres
- State/National parks





*A Club Affiliated Resort*

# Scottsdale Links Resort

16858 North Perimeter Drive  
Scottsdale, Arizona 85260

United States

1.480.563.0500

Scottsdale Links Resort showcases elegantly appointed accommodations with private patios that provide guests the ultimate in convenience complete with a resort class spa and fitness center.

Vacationers interested in the magic of Scottsdale, Arizona, will find this resort tucked between the TPC Desert Golf Course and the breathtaking McDowell Mountains, offering a host of scheduled activities, tennis and relaxing pool and spa-side areas.

### POINTS VALUES

ACCOMMODATION	MAX./PRIVATE OCCUPANCY	LOW SEASON	MID SEASON	HIGH SEASON	PEAK SEASON
1BDR	4/2	4,000	6,000	7,500	8,500
2BDR	6/4	6,000	8,000	9,000	10,000
3BDR	8/6	8,000	9,000	10,000	12,000
<b>2014 WEEKS</b>		28-33	25-27, 43-50	18-24, 34-42	1-17, 51-52
<b>2015 WEEKS</b>		28-33	25-27, 43-50	18-24, 34-42	1-17, 51-52

Nightly midweek rates are 10% of week rate. Check-in day for weekly occupancy: Friday / Saturday / Sunday.

Note: Book from 10 months prior to arrival.

### SERVICES AND AMENITIES

- BBQ area
- Bocce ball
- Broadband internet
- Concierge
- Croquet
- Fitness center/centre
- Gift shop
- Gym
- Heated outdoor pool
- Jetted spa
- Parking
- Steam room
- WiFi

### NEARBY ATTRACTIONS

- Canoeing
- Golf
- Grocery store
- Hiking trails
- Horseback riding
- Mountain biking
- Museums
- Nightlife
- Restaurants
- River rafting
- Shopping
- Zoo







*A Club Affiliated Resort*

# Scottsdale Villa Mirage

7887 East Princess Boulevard  
Scottsdale, Arizona 85255

United States

1.480.473.4000

Relax and rejuvenate at Scottsdale Villa Mirage and enjoy 300 days of sunshine.

During your quintessential year round getaway, the entire family will enjoy the comfort of its surroundings complete with fully equipped kitchens, fireplaces and in-room washers and dryers. Plan your escape to this Sonoran Desert paradise where backcountry tours and Grand Canyon day trips are readily available, or take in a game at a number of nearby parks and stadiums.

Whether you're looking for sports and fitness or jazz and blues, you'll find it all when you stay at Scottsdale Villa Mirage.

### POINTS VALUES

ACCOMMODATION	MAX/PRIVATE OCCUPANCY	LOW SEASON	MID SEASON	HIGH SEASON	PEAK SEASON
Studio	4/2	-	3,000	4,000	6,000
1BDR	4/2	-	4,500	5,500	7,500
2BDR	8/6	-	7,000	9,000	12,000
<b>2014 WEEKS</b>		-	1-3, 47, 49-50	4-15, 18-26, 28-46	16-17, 27, 48, 51-52
<b>2015 WEEKS</b>		-	1-3, 47, 49-50	4-13, 16-26, 28-46	14-15, 27, 48, 51-52

Nightly midweek rates are 10% of week rate. Check-in day for weekly occupancy: Friday / Saturday / Sunday. No elevator.

Note: Book from 10 months prior to arrival.



### SERVICES AND AMENITIES

- Arts and crafts
- Basketball courts
- BBQ area
- Broadband internet
- Children's pool
- Concierge assistance
- Fitness center/centre
- Gift shop
- Guest services
- Heated outdoor pool
- Laundry facilities
- Organized activities
- Picnic area
- Playground
- Pool table
- Sauna
- Spa
- Table tennis
- Tennis courts
- WiFi

### NEARBY ATTRACTIONS

- Backcountry tours
- Bars/Restaurants
- Casinos
- Golf
- Grocery store
- Hair salon
- Hiking
- Horseback riding
- Hot air ballooning
- Massage services
- Mini-golf
- Museums
- Nightlife
- Pro shop
- Shopping
- Shows/Theatres
- Snack bars
- State/National parks
- Theme parks





*A Home Collection Resort*

# The Roundhouse Resort

5829 Bucksprings Road  
Pinetop, Arizona 85935  
United States  
1.928.369.4848



The Roundhouse Resort, located in eastern Arizona features large fully equipped kitchens, spacious getaways and a perfect destination retreat.

From summer trails and local festivals to winter ski runs and nearby lakes, Arizona's White Mountains provide a picturesque panorama for every season.

### POINTS VALUES

ACCOMMODATION	MAX/PRIVATE OCCUPANCY	LOW SEASON	MID SEASON	HIGH SEASON	PEAK SEASON
Studio	4/2	-	2,500	3,500	4,000
1 BDR	4/2	-	4,000	5,000	6,000
2 BDR	6/4	-	5,500	6,500	7,500
<b>2014 WEEKS</b>		-	1-7, 48-50	8-12, 14-15, 18-21, 23-24, 28-30, 32-34, 36-38, 42-46	13, 16-17, 22, 25-27, 31, 35, 39-41, 47, 51-52
<b>2015 WEEKS</b>		-	1-7, 48-50	8-12, 16-21, 23-24, 28-30, 32-35, 37-38, 42-46	13-15, 22, 25-27, 31, 36, 39-41, 47, 51-52

Weekly stays only. Check-in day for weekly occupancy: Friday. No elevator.

Note: Book from 13 months prior to arrival.

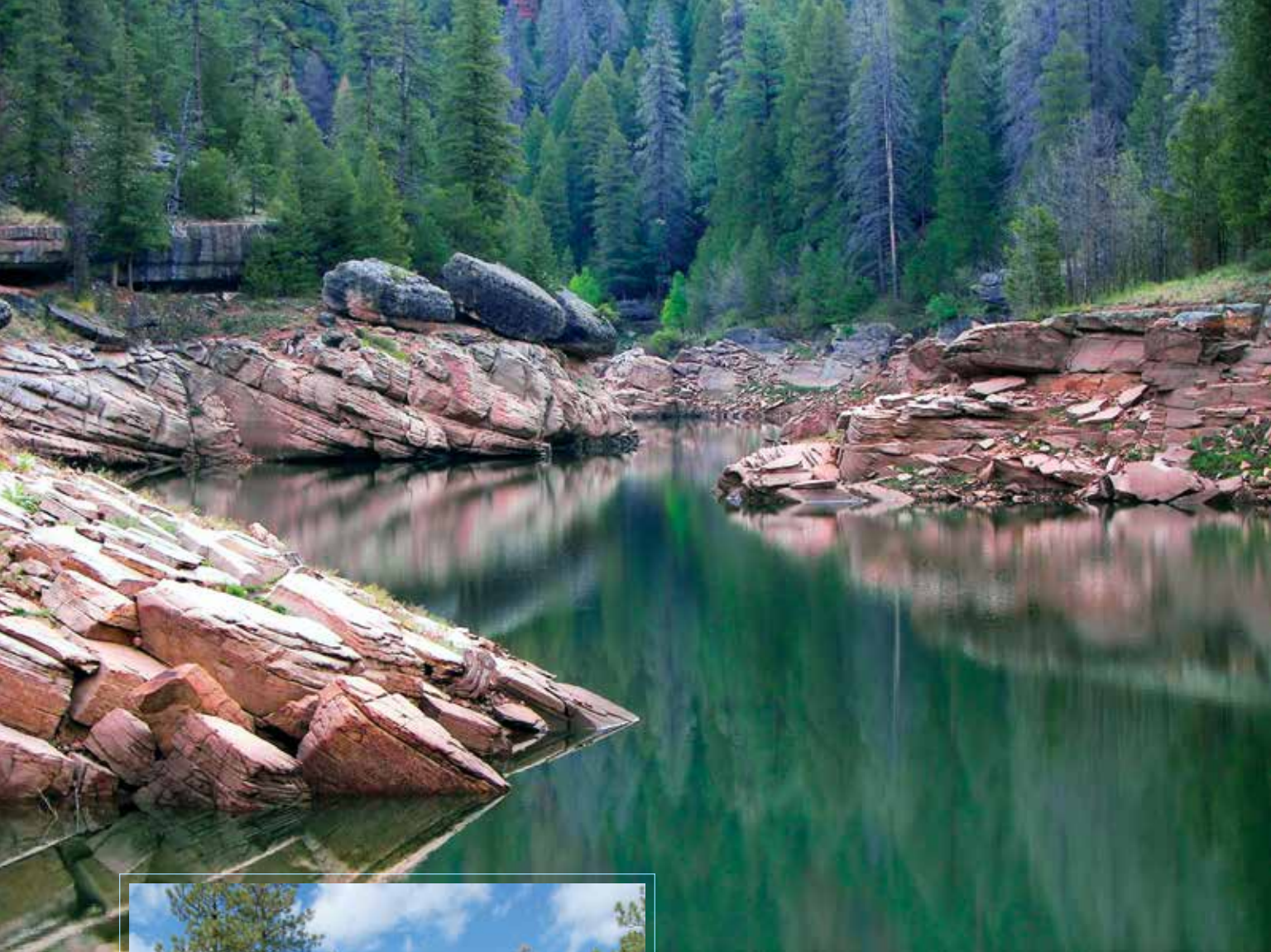
### SERVICES AND AMENITIES

- BBQ area
- Bocce ball
- Fireplaces
- Full kitchen
- Horseshoe pit
- Indoor pool
- Jetted spa
- King size beds
- Mini-golf
- Playground

### NEARBY ATTRACTIONS

- Basketball court
- Biking
- Casino
- Cross-country skiing
- Downhill skiing
- Fishing
- Golf
- Heated indoor pool
- Hiking
- Horseback riding
- Local festivals
- Museums
- Ping-pong
- Pool tables
- Racquetball
- Restaurants
- Shopping
- Sleigh riding
- Snow skiing
- Snowboarding
- Snowshoeing
- State/National parks
- Tennis





*A Home Collection Resort*

## PVC at The Roundhouse Resort

5801 Bucksprings Road  
Pinetop, Arizona 85935  
United States  
1.928.369.5100

PVC at The Roundhouse Resort is nestled in eastern Arizona's White Mountains where Pinetop-Lakeside's motto is "Celebrate the Seasons" and where guests can enjoy year-round adventure.

The log-sided mountain homes at PVC at The Roundhouse Resort feature fireplaces, jetted spa, large fully equipped kitchens, covered porches and private yards and are a perfect getaway for family cabin fun. After a day of outdoor play, guests will look forward to a relaxing master suite spa retreat.

From summer trails and local festivals to winter ski runs and nearby lakes, Arizona's White Mountains provide a picturesque panorama for every season.

### POINTS VALUES

ACCOMMODATION	MAX/PRIVATE OCCUPANCY	LOW SEASON	MID SEASON	HIGH SEASON	PEAK SEASON
2 BDR Cabin	6/4	-	8,500	10,000	12,000
2 BDR Deluxe Cabin	6/4	-	9,000	11,000	12,500
<b>2014 WEEKS</b>		-	1-7, 48-50	8-12, 14-15, 18-21, 23-24, 28-30, 32-34, 36-38, 42-46	13, 16-17, 22, 25-27, 31, 35, 39-41, 47, 51-52
<b>2015 WEEKS</b>		-	1-7, 48-50	8-12, 16-21, 23-24, 28-30, 32-35, 37-38, 42-46	13-15, 22, 25-27, 31, 36, 39-41, 47, 51-52

Nightly midweek rates are 10% of week rate. Check-in day for weekly occupancy: Friday / Saturday / Sunday.

Note: Book from 13 months prior to arrival.

### SERVICES AND AMENITIES

- BBQ area
- Bocce ball
- Fireplaces
- Full kitchen
- Horseshoe pit
- Jetted spa
- King size beds
- Mini-golf
- Playground

### NEARBY ATTRACTIONS

- Basketball court
- Biking
- Casino
- Cross-country skiing
- Downhill skiing
- Fishing
- Golf
- Heated indoor pool
- Hiking
- Horseback riding
- Local festivals
- Museums
- Ping-pong
- Pool tables
- Racquetball
- Restaurants
- Rodeos
- Shopping
- Sleigh riding
- Snow skiing
- Snowboarding
- Snowshoeing
- State/National parks
- Tennis







*A Home Collection Resort*

## Varsity Clubs of America- Tucson

3855 East Speedway Boulevard  
Tucson, Arizona 85716  
United States  
1.520.318.3777

Varsity Clubs of America-Tucson provide all-suite guest accommodations with convenient proximity to the University of Arizona and a number of golf courses, including a variety of municipal and championship style luxury.

Tucson affords travelers an oasis under the Sonoran Sun. Affectionately known as Old Pueblo, Tucson is built upon a deep Native American, Spanish, Mexican and Old West foundation and the Varsity Clubs of America-Tucson affords a relaxing getaway whether traveling for business, game day, family and friends, or just a little down time.

Varsity Clubs of America-Tucson is the perfect spot for your adventure-packed vacation or laid-back getaway.

### POINTS VALUES

ACCOMMODATION	MAX./PRIVATE OCCUPANCY	LOW SEASON	MID SEASON	HIGH SEASON	PEAK SEASON
Studio	4/2	2,000	2,500	3,500	4,000
1BDR	4/2	3,500	4,000	5,000	6,000
2BDR	6/4	4,000	4,500	6,500	7,500
<b>2014 WEEKS</b>		28-33	25-27, 43-50	18-24, 34-42	1-17, 51-52
<b>2015 WEEKS</b>		28-33	25-27, 43-50	18-24, 34-42	1-17, 51-52

Nightly midweek rates are 10% of week rate. Check-in day for weekly occupancy: Friday / Saturday / Sunday. Points values subject to increase during game weeks.

Note: Book from 13 months prior to arrival.

### SERVICES AND AMENITIES

- BBQ area
- Billiards
- Cable TV
- Coffee maker
- DVD player
- Fitness center
- Gift shop
- Hair dryer
- Jetted spa
- Kitchenette
- Meeting rooms
- Outdoor pool
- Toaster
- WiFi

### NEARBY ATTRACTIONS

- Art gallery
- Bike trails
- Biosphere
- Golf
- Hot air ballooning
- Local festivals
- Major League sporting events
- Mini-golf
- Museums
- Planetarium
- Restaurants
- Sports stadiums
- State/National parks
- Supermarkets







*A Club Affiliated Resort*

# Lake Tahoe Vacation Resort

901 Ski Run Boulevard  
South Lake Tahoe, California 96150  
United States  
1.530.541.6122



Visit America's largest alpine lake and explore the sapphire blue waters of Lake Tahoe nestled between the majestic snow packed peaks of the Sierra Nevada Mountains.

Enjoy the well-appointed amenities of Lake Tahoe Vacation Resort from the pool, exercise equipment and sauna to the adjacent Ski Run Marina and Heavenly® Mountain Resort Base Lodge.

Located just a mile from the casino district, the resort is accessible to all area attractions.

### POINTS VALUES

ACCOMMODATION	MAX/PRIVATE OCCUPANCY	LOW SEASON	MID SEASON	HIGH SEASON	PEAK SEASON
Studio	2/2	2,000	2,500	3,000	4,000
Studio	4/4	2,000	2,500	3,000	4,000
1 BDR	4/2	5,500	6,000	7,500	10,000
2 BDR	6/4	7,500	8,500	10,500	14,000
2 BDR	8/6	7,500	8,500	10,500	14,000
<b>2014 WEEKS</b>		15, 18-20, 40-46	21-26, 33-39, 47, 49-50	1-14, 28-32	16-17, 27, 48, 51-52
<b>2015 WEEKS</b>		17-20, 40-46	21-26, 33-39, 47, 49-50	1-13, 16, 28-32	14-15, 27, 48, 51-52

Nightly midweek rates are 10% of week rate. Check-in day for weekly occupancy: Friday / Saturday / Sunday.

Note: Book from 10 months prior to arrival.



### SERVICES AND AMENITIES

- Air conditioning
- Balcony/Terrace
- BBQ area
- Cable TV
- Ceiling fans in select units
- Concierge assistance
- Fitness center/centre
- Full/Partial kitchens
- Gift shop
- Guest services
- Indoor pool
- Jetted spa
- Laundry facilities
- Marina
- Outdoor pool
- Picnic area
- Restaurants
- Sauna
- Spa
- Stereo
- Television
- Valet
- WiFi

### NEARBY ATTRACTIONS

- Beach
- Bike rentals
- Boating
- Casinos
- Fishing
- Golf
- Hiking
- Historic sites
- Horseback riding
- Jet Ski® rentals
- Lake
- Mountain biking
- Nightlife
- Sailing
- Scuba diving
- Shopping
- Shows/Theatres
- Sleigh rides
- Snorkeling
- Snow skiing
- Snowboarding
- Snowmobile rentals
- State/National parks
- Water skiing
- Windsurfing



*A Home Collection Resort*

## The Historic Craggs Lodge

300 Riverside Drive  
Estes Park, Colorado 80517  
United States  
1.970.586.6066

Nestled quietly on the north shoulder of Prospect Mountain, The Historic Crags Lodge offers breathtaking and majestic views of the Continental Divide to the west and a bird's eye view of downtown Estes Park to the east. The Historic Crags Lodge is everything you would imagine from a quiet Colorado mountain retreat.

Welcome to a home from home when you discover The Historic Crags Lodge and become part of an ongoing family history that began 85 years ago.

Explore The Historic Crags Lodge set high amid the mountain pines of the Colorado Rockies and enjoy comfortable guest suites complete with dining and group services for families, weddings and conferences, or just the two of you, all within easy access of the Estes Park Aerial Tramway and the spectacular Rocky Mountain National Park.

#### POINTS VALUES

ACCOMMODATION	MAX/PRIVATE OCCUPANCY	LOW SEASON	MID SEASON	HIGH SEASON	PEAK SEASON
Studio	4/2	2,500	3,000	3,500	4,500
1BDR	4/2	4,000	5,000	6,000	7,000
2BDR	6/4	5,500	6,500	8,000	10,000
<b>2014 WEEKS</b>		15-20, 36-47	14, 21-25, 33-35	2, 4, 26-32, 48-50	1, 3, 5-13, 51-52
<b>2015 WEEKS</b>		15-20, 35, 37-47	14, 21-25, 33-34, 36	2, 4, 26-32, 48-50	1, 3, 5-13, 51-52

Nightly midweek rates are 10% of week rate. Check-in day for weekly occupancy: Friday / Saturday / Sunday. No air conditioning.

Note: Book from 13 months prior to arrival.

#### SERVICES AND AMENITIES

- Cable TV
- Conference facilities
- Fireplace in select units
- Kitchenettes
- Restaurant
- WiFi
- Broadband internet
- Outdoor pool
- BBQ area

#### NEARBY ATTRACTIONS

- Cross-country skiing
- Downhill skiing
- Hay rides
- Hiking
- Lake
- Local festivals
- Restaurants
- Sleigh rides
- Snowshoeing
- State/National parks
- Theater







*A Club Affiliated Resort*

# Cypress Pointe Resort

8651 Treasure Cay Lane  
Orlando, Florida 32836  
United States  
1.407.238.2300

Cypress Pointe Resort is the perfect destination for family fun in Orlando.

All of Florida's main attractions, including Walt Disney World® Theme Parks and SeaWorld® are at your doorstep. The shopping is superb with the Florida Mall and the numerous designer outlet malls that surround your resort.

The activity doesn't end when you get back to your resort. With an outdoor swimming pool, children's pools and playgrounds, you have plenty to choose from.

### POINTS VALUES

ACCOMMODATION	MAX/PRIVATE OCCUPANCY	LOW SEASON	MID SEASON	HIGH SEASON	PEAK SEASON
3 BDR	8/6	-	5,500	7,000	10,500
<b>2014 WEEKS</b>		-	1-4, 37-47, 49-50	5-15, 18-26, 28-36	16-17, 27, 48, 51-52
<b>2015 WEEKS</b>		-	1-4, 37-47, 49-50	5-13, 16-26, 28-36	14-15, 27, 48, 51-52

Nightly midweek rates are 10% of week rate. Check-in day for weekly occupancy: Friday / Saturday / Sunday. No elevator.

Note: Book from 10 months prior to arrival.

### SERVICES AND AMENITIES

- Air conditioning
- BBQ area
- Children's pool
- Fitness center/centre
- Full or partial kitchen
- Game room
- Grocery store
- Guest services
- Organized activities
- Outdoor pool
- Playground
- Roman tub
- Snack bars
- Tennis courts
- Volleyball courts
- Washer/Dryer
- WiFi

### NEARBY ATTRACTIONS

- Boating
- Fishing
- Golf
- Hair salon
- Horseback riding
- Jet Ski® rentals
- Nightlife
- Sailing
- Pro shop
- Restaurants
- Shopping
- Shows/Theatres
- Theme parks
- Water skiing







*A Club Affiliated Resort*

## Daytona Beach Regency

400 North Atlantic Avenue  
Daytona Beach, Florida 32118

United States

1.386.255.0251

Daytona Beach Regency is the perfect location for a Florida beach vacation. Just steps away from the boardwalk, this well-equipped, beachfront resort offers spacious accommodations, organized activities and an indoor and outdoor swimming complex complete with pools, jetted spa and waterslides.

Relax on the white sandy shores of famous Daytona Beach and test your driving skills on the sand or at the raceway attractions and spend your evenings perusing the Downtown Shopping District.

### POINTS VALUES

ACCOMMODATION	MAX/PRIVATE OCCUPANCY	LOW SEASON	MID SEASON	HIGH SEASON	PEAK SEASON
1 BDR	4/2	4,000	4,500	5,500	6,500
1 BDR Premium*	4/2	6,000	6,500	7,500	9,500
1 BDR Junior Suite*	4/2	7,000	8,000	9,500	11,500
2 BDR	6/4	6,000	6,500	7,500	8,500
1 BDR Presidential Suite*	4/2	8,000	9,000	10,500	13,000
<b>2014 WEEKS</b>		1-4, 43-46, 48-50	18-19, 35-40, 42	5, 7-8, 10-17, 20-21, 47	6, 9, 22-34, 41, 51-52
<b>2015 WEEKS</b>		1-4, 43-46, 48-50	18-19, 35-40, 42	5, 7-8, 10-17, 20-21, 47	6, 9, 22-34, 41, 51-52

Nightly midweek rates are 10% of week rate. Check-in day for weekly occupancy: Friday / Saturday / Sunday. \*Check-in day for weekly occupancy in Premium and Suite accommodations: Sunday.

Note: Book from 10 months prior to arrival.



### SERVICES AND AMENITIES

- 24 hour front desk
- Activities department
- Air conditioning
- Balcony/Terrace
- Bars
- BBQ area
- Dishwasher
- Fitness center/centre
- Full kitchen
- Game room
- Garden tub/Jetted tub
- Indoor jetted spa
- Indoor pool
- Internet
- Laundry facilities
- Outdoor hot tub
- Outdoor pool
- Safety deposit boxes
- Stereo
- WiFi

### NEARBY ATTRACTIONS

- Beach activities
- Gift shop
- Grocery store
- Nightlife
- Restaurants
- Shopping
- Speedway
- Theme parks
- Water park
- Parasailing
- Jet Ski® rental
- Fishing
- Wind surfing





*A Club Affiliated Resort*

## Grand Beach

8317 Lake Bryan Beach Boulevard  
Orlando, Florida 32821  
United States  
1.407.238.2500

The ultimate family vacation destination, Grand Beach in Orlando is just minutes from Florida's Walt Disney World®, SeaWorld®, Universal Studios® and endless designer outlet malls.

Enjoy the many amenities of this quiet lakefront getaway where you can take a dip in the outdoor pools, relax in the jetted spa or enjoy fishing, canoeing and other water sports on Little Lake Bryan.

Spacious and well-appointed, Grand Beach welcomes families large and small. Fully equipped kitchens, oversized baths and comfortable bedrooms provide relaxing comfort for your action-filled Orlando getaway.

### POINTS VALUES

ACCOMMODATION	MAX/PRIVATE OCCUPANCY	LOW SEASON	MID SEASON	HIGH SEASON	PEAK SEASON
1 BDR - Phase II	4/2	-	4,000	5,000	6,500
2 BDR - Phase II	6/4	-	6,000	7,500	9,500
3 BDR - Phase I	8/6	-	8,500	10,500	13,500
3 BDR - Phase II	10/6	-	8,500	10,500	13,500
<b>2014 WEEKS</b>	-	1-4, 37-47, 49-50	5-15, 18-26, 28-36	16-17, 27, 48, 51-52	
<b>2015 WEEKS</b>	-	1-4, 37-47, 49-50	5-13, 16-26, 28-36	14-15, 27, 48, 51-52	

Nightly midweek rates are 10% of week rate. Check-in day for weekly occupancy: Friday / Saturday / Sunday.

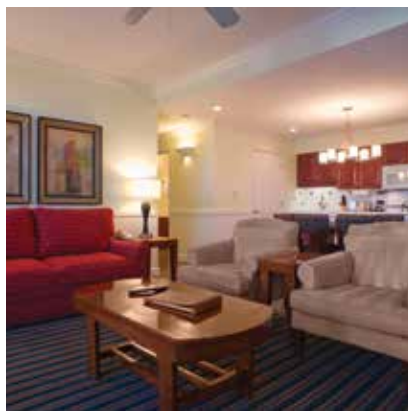
Note: Book from 10 months prior to arrival.

### SERVICES AND AMENITIES

- Air conditioning
- BBQ area
- Children's pool
- Fishing
- Fitness center/centre
- Full kitchen
- Grocery store
- Jetted spa
- Lake
- Laundry facilities
- Organized activities
- Outdoor pool
- Playground
- Tennis courts
- WiFi

### NEARBY ATTRACTIONS

- Beaches
- Golf
- Hair salon
- Nightlife
- Restaurants
- Shopping
- Snack bars
- Space Coast
- Sports complex
- Theme parks
- Water sports







*A Club Affiliated Resort*

## Grande Villas Resort

12118 Turtle Cay Circle  
Orlando, Florida 32836  
United States  
1.407.238.2300

Perfectly situated for a family vacation that includes the must see Orlando attractions such as Walt Disney World® Theme Parks, Universal's Islands of Adventure®, Universal Studios® and SeaWorld® - Grande Villas Resort is the answer to your accommodation needs. When you need to relax, enjoy the resort's two outdoor swimming pools, spa pools, children's pool, playgrounds and Mini-golf.

### POINTS VALUES

ACCOMMODATION	MAX/PRIVATE OCCUPANCY	LOW SEASON	MID SEASON	HIGH SEASON	PEAK SEASON
1BDR	4/2	-	3,000	4,000	5,500
2BDR	6/4	-	5,000	6,500	9,000
3BDR	8/6	-	7,500	9,000	12,500
<b>2014 WEEKS</b>	-	-	1-4, 37-47, 49-50	5-15, 18-26, 28-36	16-17, 27, 48, 51-52
<b>2015 WEEKS</b>	-	-	1-4, 37-47, 49-50	5-13, 16-26, 28-36	14-15, 27, 48, 51-52

Nightly midweek rates are 10% of week rate. Check-in day for weekly occupancy: Friday / Saturday / Sunday.

Note: Book from 10 months prior to arrival.

### SERVICES AND AMENITIES

- Air conditioning
- BBQ area
- Children's pool
- Fitness center/centre
- Full or partial kitchen
- Game room
- Grocery store
- Guest services
- Organized activities
- Outdoor pool
- Playground
- Roman tub
- Snack bars
- Tennis courts
- Volleyball courts
- Washer/Dryer
- WiFi

### NEARBY ATTRACTIONS

- Boating
- Fishing
- Golf
- Hair salon
- Horseback riding
- Jet Ski® rentals
- Nightlife
- Sailing
- Pro shop
- Restaurants
- Shopping
- Shows/Theatres
- Theme parks
- Water skiing







*A Home Collection Resort*

# Varsity Clubs of America- South Bend

3800 North Main Street  
Mishawaka, Indiana 46545  
United States  
1.574.277.0500



Varsity Clubs of America–South Bend is located in Mishawaka, Indiana, and is an all-suite hotel offering unique and convenient accommodations in the heart of a college town.

With its easy access to the University of Notre Dame, Varsity Clubs of America–South Bend provides comfortable guest suites, indoor and outdoor swimming pools, a spacious indoor billiards parlor and plenty of outdoor barbeque grills for game days and family fun.

The South Bend/Mishawaka area boasts a variety of enriching and entertaining attractions from outdoor recreation and sports to museums, nightlife and shopping.

### POINTS VALUES

ACCOMMODATION	MAX/PRIVATE OCCUPANCY	LOW SEASON	MID SEASON	HIGH SEASON	PEAK SEASON
Studio	4/2	-	2,500	3,500	4,000
1 BDR	4/2	-	3,500	5,000	6,000
1 BDR Deluxe	4/2	-	4,000	5,500	6,500
2 BDR	6/4	-	4,500	6,500	7,500
2 BDR Deluxe	6/6	-	6,000	7,000	8,500
The Alumni House	6/4	-	15,500	16,500	18,500
<b>2014 WEEKS</b>	-	1-6, 9-14, 44-50	7-8, 15-23, 34-43	24-33, 51-52	
<b>2015 WEEKS</b>	-	1-6, 9-13, 16, 44-50	7-8, 14-15, 17-23, 34-43	24-33, 51-52	

Nightly midweek rates are 10% of week rate. Check-in day for weekly occupancy: Friday / Saturday / Sunday. Points values subject to increase during game weeks.

Note: Book from 13 months prior to arrival.

### SERVICES AND AMENITIES

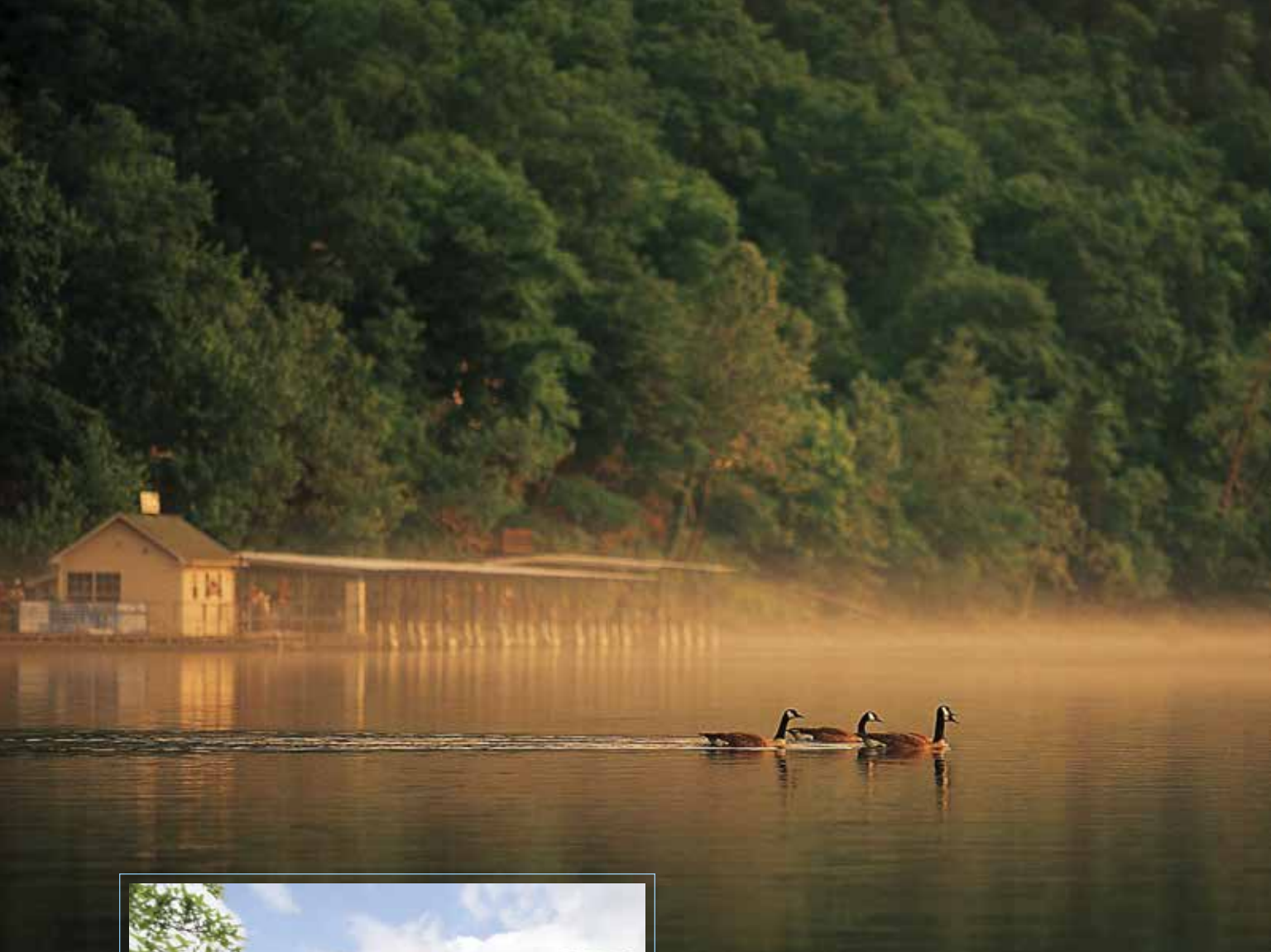
- Basketball
- BBQ area
- Bocce ball
- Cable TV
- Coffee maker
- Gift shop
- Hair dryer
- Indoor pool
- Internet
- Jetted spa
- Kitchen
- Mini-golf
- Outdoor pool
- Patio
- Pool table
- Restaurant
- Toaster

### NEARBY ATTRACTIONS

- Amish community
- Boating
- College athletics
- Fishing
- Lake
- Museums
- National College Football Hall of Fame
- Restaurants
- Shopping
- State/National parks
- University of Notre Dame







*A Club Affiliated Resort*

# The Suites at Fall Creek

1 Fall Creek Drive  
Branson, Missouri 65616

United States

1.417.336.3611

The Suites at Fall Creek offer fully equipped lakeside accommodations surrounded by the Ozark Mountains and the picturesque lakes of the White River Basin.

Whether you choose to relax by the indoor/outdoor pools or rejuvenate by your fireplace, adventure beckons outside your peaceful resort getaway.

Branson, Missouri is your destination for good old-fashioned family fun where you can choose from more than 70 live shows (head for the famous '76 Strip Country Music Boulevard), 50 restaurants, amusement parks, whitewater rafting and premier trout fishing.

### POINTS VALUES

ACCOMMODATION	MAX/PRIVATE OCCUPANCY	LOW SEASON	MID SEASON	HIGH SEASON	PEAK SEASON
Studio	2/2	2,000	2,500	3,000	4,500
1 BDR	4/4	2,500	3,500	4,500	6,000
2 BDR	6/6	3,500	4,500	6,000	8,000
2 BDR Deluxe	6/6	4,500	5,500	7,500	10,500
<b>2014 WEEKS</b>		1-8	9-14, 47, 49-50	15, 18-26, 28-46	16-17, 27, 48, 51-52
<b>2015 WEEKS</b>		1-8	9-13, 16, 47, 49-50	17-26, 28-46	14-15, 27, 48, 51-52

Nightly midweek rates are 10% of week rate. Check-in day for weekly occupancy: Friday / Saturday.

Note: Book from 10 months prior to arrival.



### SERVICES AND AMENITIES

- Air conditioning
- Basketball courts
- BBQ area
- Boating
- Fishing
- Fitness center/centre
- Full kitchen
- Full service beauty salon
- Gift shop
- Indoor pool
- Jetted spa
- Lake
- Laundry facilities
- Mini-golf
- Outdoor pool
- Playground
- Shuffleboard
- Tennis courts
- WiFi

### NEARBY ATTRACTIONS

- Fly fishing
- Golf
- Grocery store
- Hiking
- Horseback riding
- Jet Ski® rentals
- National park
- Nightlife
- Parasailing
- Picnic area
- Pro shop
- Sailing
- Shopping
- Shows/Theatres
- State park
- Theme parks
- Water skiing





*A Club Affiliated Resort*

## Desert Paradise Resort

5165 South Decatur Boulevard  
Las Vegas, Nevada 89118  
United States  
1.702.579.3600

Tucked away from the neon lights but still surrounded by the excitement only Las Vegas can offer, all that glitters on famous Las Vegas Boulevard or Fremont Street is there for you to enjoy.

Your fully equipped accommodations offer everything you would find at a Strip hotel, without the crowds.

Heated pools, spas and a fitness center are available year round, and the concierge offers discounts to shows, as well as information on area attractions, major shopping centers and championship golf courses.

### POINTS VALUES

ACCOMMODATION	MAX./PRIVATE OCCUPANCY	LOW SEASON	MID SEASON	HIGH SEASON	PEAK SEASON
1 BDR	4/2	4,000	6,000	7,500	8,500
2 BDR	6/4	6,000	8,000	9,000	10,000
<b>2014 WEEKS</b>		45-46, 49-50	3-8	23-35, 48	1-2, 9-22, 36-44, 47, 51-52
<b>2015 WEEKS</b>		45-46, 49-50	3-8	23-35, 48	1-2, 9-22, 36-44, 47, 51-52

Nightly midweek rates are 10% of week rate. Check-in day for weekly occupancy: Friday / Saturday / Sunday.

Note: Book from 10 months prior to arrival.

### SERVICES AND AMENITIES

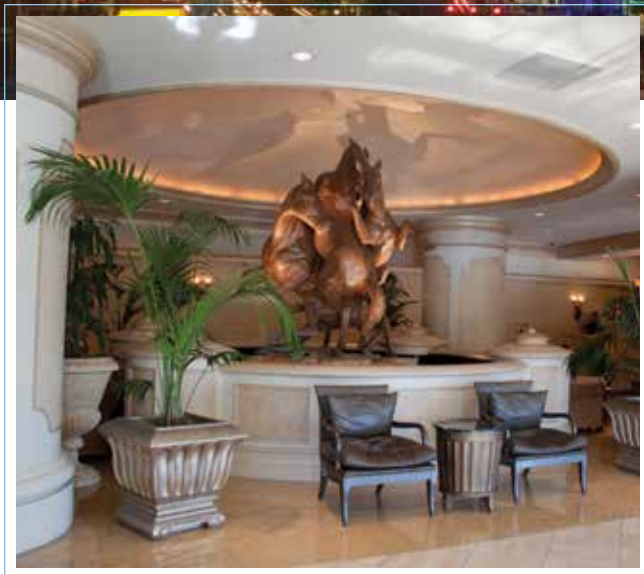
- Air conditioning
- Balcony/Terrace
- BBQ area
- Broadband internet
- Cable TV
- Concierge assistance
- Dishwasher
- Fitness center/centre
- Full kitchen
- Game room
- Hair dryers
- Ironing facilities
- Jetted spa
- Laundry facilities
- Outdoor pool
- Roman tub
- WiFi

### NEARBY ATTRACTIONS

- Bowling alley
- Casinos
- Golf
- Grocery store
- Helicopter/Plane sightseeing
- Hiking
- Horseback riding
- Lake Mead
- Land tours
- Mini-golf
- Museums
- Nightlife
- Parks
- Shopping
- Shows/Theatres
- Spa
- Water sports







*A Club Affiliated Resort*

## Polo Towers Suites

3745 Las Vegas Boulevard South  
Las Vegas, Nevada 89109  
United States  
1.702.261.1000



Only one boulevard offers non-stop action and excitement, and you can enjoy every extraordinary moment at Polo Towers where classic elegance and casual comfort meet.

Located in the heart of the Las Vegas Strip, Polo Towers provides guests with a choice of accommodations, resort style amenities and easy access to world class casinos, spas, shopping, entertainment and attractions.

An oasis in the heart of the Las Vegas Valley, Polo Towers is the perfect vantage point for local sightseeing and adventure. After all, what other resort destination lets you visit Paris, Venice, New York City and Rome in one city stop? It's no mirage... everything from Caesar and the Forum to the canals of Venice is here for you to enjoy.

#### POINTS VALUES

ACCOMMODATION	MAX/PRIVATE OCCUPANCY	LOW SEASON	MID SEASON	HIGH SEASON	PEAK SEASON
Studio Efficiency	2/2	-	-	6,000	8,000
1 BDR Suite	4/4	-	-	9,000	11,000
2 BDR Suite	6/6	-	-	12,000	15,000
<b>2014 WEEKS</b>		-	-	1-15, 18-26, 28-47, 49-51	16-17, 27, 48, 52
<b>2015 WEEKS</b>		-	-	1-13, 16-26, 28-47, 49-51	14-15, 27, 48, 52

Nightly midweek rates are 10% of week rate. Check-in day for weekly occupancy: Friday / Saturday / Sunday.

Note: Book from 10 months prior to arrival.

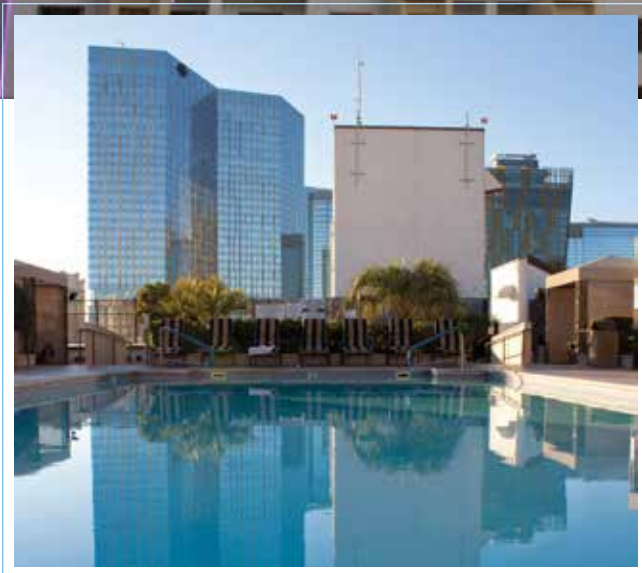


#### SERVICES AND AMENITIES

- ATM/Banking
- Bar/Cocktail lounge
- BBQ area
- Beauty salon
- Concierge services
- Fitness center/centre
- Games
- Laundry facilities
- Massage services
- Restaurants
- Rooftop pool/Spa
- Shopping
- Valet parking
- Wedding facilities
- WiFi

#### NEARBY ATTRACTIONS

- Basketball
- Bike trails
- Boating/Sailing
- Bowling alley
- Canoeing/Rowing
- Casinos
- Cycling/Bike rentals
- Golf
- Grocery store
- Helicopter/Plane sightseeing
- Hiking
- Historic sites
- Horseback riding
- Hot air ballooning
- Jeep® tours
- Jet Ski® rentals
- Lake Mead
- Land tours
- Marina
- Mountain biking
- Mountain climbing
- Museums
- Nightlife
- Parks
- Picnic area
- Shopping
- Shows/Theatres
- Spa



*A Club Affiliated Resort*

## Polo Towers Villas

3745 Las Vegas Boulevard South  
Las Vegas, Nevada 89109

United States

1.702.261.1000

Step into the welcoming marble enveloped lobby, rich with a tranquil aroma and the gentle melodic sounds of the grand piano, then venture to your spacious Polo Towers accommodation—all, of course, atop fabulous Las Vegas Boulevard.

Surrounded by mega-sized resorts, shopping, spas and championship golf, dine along the Grand Canal or in the Eiffel Tower.

Entertainment abounds across the Las Vegas Valley, and your Tuscan inspired accommodations at Polo Towers Villas offer a treasured respite from the non-stop action as well as central access to day trips to Mount Charleston, Hoover Dam and the Grand Canyon.

### POINTS VALUES

ACCOMMODATION	MAX./PRIVATE OCCUPANCY	LOW SEASON	MID SEASON	HIGH SEASON	PEAK SEASON
Studio Efficiency	2/2	-	-	7,500	9,000
1 BDR Villa	4/4	-	-	10,500	12,000
2 BDR Villa	6/6	-	-	14,500	16,000
<b>2014 WEEKS</b>		-	-	1-15, 18-26, 28-47, 49-51	16-17, 27, 48, 52
<b>2015 WEEKS</b>		-	-	1-13, 16-26, 28-47, 49-51	14-15, 27, 48, 52

Nightly midweek rates are 10% of week rate. Check-in day for weekly occupancy: Friday / Saturday / Sunday.

Note: Book from 10 months prior to arrival.



### SERVICES AND AMENITIES

- ATM/Banking
- Bar/Cocktail lounge
- BBQ area
- Beauty salon
- Concierge services
- Fitness center/centre
- Games
- Laundry facilities
- Massage services
- Restaurants
- Rooftop pool/Spa
- Shopping
- Valet parking
- Wedding facilities
- WiFi

### NEARBY ATTRACTIONS

- Basketball
- Bike trails
- Boating/Sailing
- Bowling alley
- Canoeing/Rowing
- Casinos
- Cycling/Bike rentals
- Golf
- Grocery store
- Helicopter/Plane sightseeing
- Hiking
- Historic sites
- Horseback riding
- Hot air ballooning
- Jeep® tours
- Jet Ski® rentals
- Lake Mead
- Land tours
- Marina
- Mountain biking
- Mountain climbing
- Museums
- Nightlife
- Parks
- Picnic area
- Shopping
- Shows/Theatres
- Spa





*A Home Collection Resort*

# The Carriage House

105 East Harmon Avenue  
Las Vegas, Nevada 89109

United States

1.702.798.1020

The Carriage House is a non-gaming, all-suite hotel located in Las Vegas, Nevada, just a block away from the excitement of the Strip.

Ideally situated between the MGM Grand and Planet Hollywood Resort & Casino, The Carriage House is an ideal destination that provides a central point of access for exploring all the city has to offer including Red Rock Canyon, Mount Charleston and Kyle Canyon, The Lake Mead National Recreation Area and Hoover Dam and even a day trip to the Grand Canyon.

Spacious comfort and well-appointed amenities are signature Carriage House style and accommodations include everything from fully equipped kitchenettes or full kitchens to an outdoor heated pool and jetted spa.

### POINTS VALUES

ACCOMMODATION	MAX./PRIVATE OCCUPANCY	LOW SEASON	MID SEASON	HIGH SEASON	PEAK SEASON
Studio	2/2	-	-	3,500	4,000
1BDR	4/2	-	-	5,000	6,000
2BDR	6/4	-	-	8,000	9,000
<b>2014 WEEKS</b>		-	-	1-15, 18-26, 28-47, 49-51	16-17, 27, 48, 52
<b>2015 WEEKS</b>		-	-	1-13, 16-26, 28-47, 49-51	14-15, 27, 48, 52

Weekly stays only. Check-in day for weekly occupancy: Friday / Saturday / Sunday.

Note: Book from 13 months prior to arrival.



### SERVICES AND AMENITIES

- Basketball court
- Cable TV
- Coffee makers
- Hair dryer
- Iron/Ironing board
- Kitchens
- Laundry facilities
- Outdoor heated pool
- Tennis court
- WiFi

### NEARBY ATTRACTIONS

- Basketball
- Bike trails
- Boating/Sailing
- Bowling alley
- Canoeing/Rowing
- Casinos
- Cycling/Bike rentals
- Golf
- Grocery store
- Helicopter/Plane sightseeing
- Hiking
- Historic sites
- Horseback riding
- Hot air ballooning
- Jeep® tours
- Lake Mead
- Marina
- Mini-golf
- Mountain biking
- Mountain climbing
- Museums
- Nightlife
- Parks
- Shopping
- Shows/Theatres
- Spa
- Water sports





*A Club Affiliated Resort*

# Bent Creek Golf Village

3919 East Parkway  
Gatlinburg, Tennessee 37738

United States

1.865.436.2875



Winding through the foothills of the Great Smoky Mountains, discover the Gary Player par 72 golf course at Bent Creek Golf Village. This three-time Masters and British Open winner designed what one magazine rated as one of the “Top Fifty Golf Courses in the South.”

Discover the breathtaking blue mist of the surrounding mountains from your private terrace and then relax in your own well-appointed accommodation. At Bent Creek Golf Village you can enjoy the splendor of every season and the adventure that awaits you in nearby Gatlinburg.

### POINTS VALUES

ACCOMMODATION	MAX/PRIVATE OCCUPANCY	LOW SEASON	MID SEASON	HIGH SEASON	PEAK SEASON
1BDR	4/4	2,500	3,500	4,500	6,000
2BDR	8/8	3,500	4,500	6,000	8,000
2BDR - Cabin	6/6	4,000	5,500	7,000	9,500
<b>2014 WEEKS</b>		1-13, 45-47, 49-50	14-15, 18-20, 37-44	21-26, 28-36	16-17, 27, 48, 51-52
<b>2015 WEEKS</b>		1-13, 45-47, 49-50	16-20, 37-44	21-26, 28-36	14-15, 27, 48, 51-52

Nightly midweek rates are 10% of week rate. Check-in day for weekly occupancy: Friday / Saturday / Sunday.

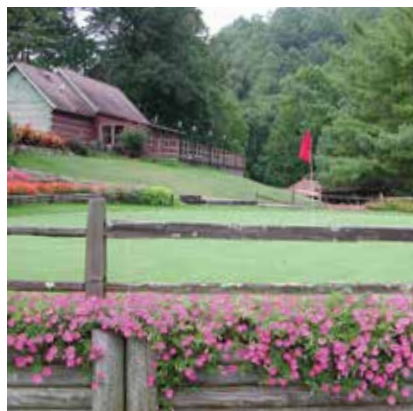
Note: Book from 10 months prior to arrival.

### SERVICES AND AMENITIES

- Air conditioning
- Basketball courts
- BBQ area
- Cable TV
- DVD player
- Fireplace in select units
- Fitness center/centre
- Full kitchen
- Game room
- Golf
- Indoor pool
- Jetted spa
- Laundry facilities
- Outdoor pool
- Picnic area
- Playground
- Pool table
- Stereo in select units
- Volleyball courts
- WiFi

### NEARBY ATTRACTIONS

- Downhill skiing
- Fishing
- Hiking
- Historic sites
- Horseback riding
- Museums
- Restaurants
- Shopping
- Shows/Theatres
- State/National parks
- Theme parks





*A Club Affiliated Resort*

## The Historic Powhatan Resort

3601 Ironbound Road  
Williamsburg, Virginia 23188

United States

1.757.220.1200

You can feel the colonial spirit reverberating in Williamsburg, a 170 acre historic town restored to its original English condition.

The Historic Powhatan Resort offers a slice of colonial history with the restored Manor House (circa 1735).

Amid 256 rolling woodland acres, The Historic Powhatan Resort offers a variety of fun during any season including cascading indoor and outdoor swimming pools, tennis courts, an outdoor pavilion and playground, and hiking and exercise trails.

Plan the ultimate family vacation with a fully equipped three-bedroom accommodation complete with a private balcony, loft and jetted spa.

### POINTS VALUES

ACCOMMODATION	MAX/PRIVATE OCCUPANCY	LOW SEASON	MID SEASON	HIGH SEASON	PEAK SEASON
1 BDR Upstairs	4/2	2,000	3,000	4,000	5,500
1 BDR Ground Floor	4/2	2,500	3,500	4,500	6,000
2 BDR	6/4	3,000	4,000	5,500	7,500
2 BDR Deluxe	6/4	4,000	5,000	6,500	8,500
3 BDR	8/6	4,000	5,000	7,000	9,500
4 BDR	12/8	6,000	8,000	11,000	15,000
4 BDR Deluxe	12/8	8,000	10,000	13,000	17,000
<b>2014 WEEKS</b>		1-13, 45-47, 49-50	14-15, 18-20, 37-44	21-26, 28-36	16-17, 27, 48, 51-52
<b>2015 WEEKS</b>		1-13, 45-47, 49-50	16-20, 37-44	21-26, 28-36	14-15, 27, 48, 51-52

Nightly midweek rates are 10% of week rate. Check-in day for weekly occupancy: Friday / Saturday / Sunday. No elevator.

Note: Book from 10 months prior to arrival.



### SERVICES AND AMENITIES

- Basketball courts
- Bike rentals
- Children's pool
- Concierge
- Fireplace in select units
- Fitness center/centre
- Full kitchen in select units
- Game room
- Indoor pool
- Laundry facilities
- Mini-golf
- Mini market
- Organized activities
- Outdoor pool
- Picnic area
- Playground
- Poolside bar
- Racquetball
- Restaurants
- Sauna
- Tennis courts
- Volleyball courts
- WiFi

### NEARBY ATTRACTIONS

- Beach
- Boating
- Canoeing
- Fishing
- Golf
- Grocery store
- Hair salon
- Historic sites
- Lake
- Museums
- National parks
- Shopping
- Shows/Theatres
- Spa
- State parks
- Theme parks
- Water skiing





*A Home Collection Resort*

## Sea of Cortez Beach Club

Paseo Mar Bermejo Parcela  
Norte No 4 Interior 5 Los Algodones  
San Carlos, Sonora  
Mexico 85506  
011.52.622.227.0373

The Sea of Cortez, with its laid back seaside havens dotted along the coast, provides a soothing escape in any season. Stroll pristine soft sand beaches that hug the deep blue waters of the Sea of Cortez along the Baja coast and enjoy the Sea of Cortez Beach Club.

Oceanfront, the Sea of Cortez Beach Club offers suites with private patios or balconies and is the perfect starting point to soak in the sunshine filled days of the Baja surf. Water sport excitement abounds with spectacular diving and snorkeling adventures, calm open sea kayaking, deep sea fishing or taking it slow with a relaxing poolside escape, whale and dolphin sightings or long and lazy beach strolls.

One thing is for certain when you choose the Sea of Cortez Beach Club, the sun and sand of the Baja coast embrace every moment of your escape.

#### POINTS VALUES

ACCOMMODATION	MAX/PRIVATE OCCUPANCY	LOW SEASON	MID SEASON	HIGH SEASON	PEAK SEASON
Studio	2/2	3,500	4,000	4,500	5,500
1BDR	4/2	4,000	5,000	5,500	6,500
2BDR	6/4	5,000	6,000	7,000	8,000
2BDR Presidential	8/4	10,500	12,500	14,500	16,500
<b>2014 WEEKS</b>		35-39	18-34, 40-43, 45-46	2-4, 8, 10, 14-17, 44, 47-51	1, 5-7, 9, 11-13, 52
<b>2015 WEEKS</b>		35-39	18-34, 40-43, 45-46	2-4, 8-9, 14-17, 44, 47-51	1, 5-7, 10-13, 52

Nightly midweek rates are 10% of week rate. Check-in day for weekly occupancy: Friday / Saturday / Sunday.

Note: Book from 13 months prior to arrival.

#### SERVICES AND AMENITIES

- Bar
- BBQ area
- Cable TV
- Children's pool
- Heated pool
- Jetted spa
- Kitchen
- Playground
- Poolside bar
- Restaurant
- Spa tub in select units
- Wet-bar
- WiFi

#### NEARBY ATTRACTIONS

- Deep sea fishing
- Golf
- Horseback riding
- Marinas
- Scuba diving
- Shopping
- Snorkeling
- Water sports
- Whale watching





*A Club Affiliated Resort*

## Flamingo Beach Resort

Pelican Key, Simpson Bay  
6 Billy Folly Road  
Phillipsburg, St. Maarten  
Netherlands Antilles  
011.721.544.3900



St. Maarten is a scuba diver's dream where you can windsurf, snorkel, hike and ride horseback.

Take advantage of duty free shopping or roam about Flamingo Beach Resort, situated on the Dutch side of the island with a private beach overlooking the crystalline splendor of the Caribbean.

With a Vegas style casino a jaunt away, and easy island access to clubs, dining and more, comfortable accommodation styles welcome relaxation.

### POINTS VALUES

ACCOMMODATION	MAX./PRIVATE OCCUPANCY	LOW SEASON	MID SEASON	HIGH SEASON	PEAK SEASON
Studio - Phase I	4/2	-	3,000	4,000	5,500
Studio Ocean View - Phase I	4/2	-	3,500	4,500	6,000
1 BDR Ocean Front - Phase I	4/4	-	4,500	5,500	7,000
1 BDR Villas - Phase II	4/2	-	5,500	6,500	8,500
2 BDR Villas - Phase II	8/6	-	8,000	10,000	13,000
<b>2014 WEEKS</b>		-	34-39	1-15, 18-26, 28-33, 40-47, 49-50	16-17, 27, 48, 51-52
<b>2015 WEEKS</b>		-	34-39	1-13, 16-26, 28-33, 40-47, 49-50	14-15, 27, 48, 51-52

Nightly midweek rates are 10% of week rate. Check-in day for weekly occupancy: Phase I - Saturday / Sunday. Phase II - Friday / Saturday / Sunday. No elevator at Phase II.

Note: Book from 10 months prior to arrival.

### SERVICES AND AMENITIES

- Air conditioning
- Balcony/Terrace
- BBQ area
- Beach
- Concierge assistance
- Elevators
- Full kitchen
- Gift shop
- Laundry facilities
- Nightlife
- Organized activities
- Outdoor pool
- Restaurant
- Snack bar
- Tennis courts
- Water sports
- WiFi

### NEARBY ATTRACTIONS

- Canoeing
- Casino
- Fitness center/centre
- Game room
- Golf
- Grocery
- Hair salon
- Horseback riding
- Lounge
- Shopping
- Shows/Theatres





*A Club Affiliated Resort*

# Broome Park Golf and Country Club

Barham, Canterbury, Kent

CT4 6QX

United Kingdom

011.44.1227.831.701

Have you ever wondered what it would have been like to own your own country estate? At Broome Park Golf and Country Club you can experience the feeling for yourself.

The grade-1 listed building at this elegant resort is a stunning example of 17th century Jacobean architecture. Steeped in history, Broome Park, which boasts a traditional British-style pub and elegant dining choices, dominates the estate in which you will find your contemporary woodland lodge.

A private, 18-hole championship length golf course is just one of many sporting attractions to divert your attention before you strike out to discover Kent—the Garden of England—and medieval Canterbury.

### POINTS VALUES

ACCOMMODATION	MAX./PRIVATE OCCUPANCY	LOW SEASON	MID SEASON	HIGH SEASON	PEAK SEASON
2 BDR Elite	6/4	6,000	8,500	9,500	10,000
<b>2014 WEEKS</b>		1-12, 46-50	13-14, 17-20, 22-23, 39-41, 44-45, 51-52	15-16, 21, 24-26, 37-38	27-36, 42-43
<b>2015 WEEKS</b>		1-12, 46-50	13, 16-20, 22-23, 39-41, 44-45, 51-52	14-15, 21, 24-26, 37-38	27-36, 42-43

Nightly midweek rates are 10% of week rate. Check-in day for weekly occupancy: Saturday.

Note: Book from 10 months prior to arrival.



### SERVICES AND AMENITIES

- Balcony/Terrace
- Bars
- Broadband internet
- Croquet lawn
- Dishwasher
- DVD player
- Full kitchen
- Golf
- Hair dryers
- Heated pool
- Internet kiosk
- Ironing facilities
- Jet showers
- Jetted spa
- Putting green
- Reception cash facility
- Restaurants
- Satellite TV
- Snooker
- Telephone
- Tennis courts
- Washer/Dryer
- WiFi

### NEARBY ATTRACTIONS

- Bars
- Cinema
- Cycling/Bike rental
- Entertainment
- Fitness center/centre
- Game room
- Grocery store
- Horseback riding
- Hot air ballooning
- Indoor pool
- Marina
- Restaurants
- Shopping
- Theatre





*A Club Affiliated Resort*

## Pine Lake Resort

Dock Acres  
Carnforth, Lancashire  
LA6 1JZ  
United Kingdom  
011.44.1524.736.190

Named after the lake around which your Scandinavian style lodge can be found, Pine Lake is ideal for water sports enthusiasts, but there is so much more.

The recreation complex is a great place to unwind, and the restaurant serves a tempting range of dishes from around the world.

Away from the resort the glorious scenery of the nearby Lune Valley and Lake District can hardly be matched anywhere in England, and the Victorian seaside village of Arnside is a wonderful place to wile away a few hours and enjoy a traditional bag of fish and chips.

### POINTS VALUES

ACCOMMODATION	MAX/PRIVATE OCCUPANCY	LOW SEASON	MID SEASON	HIGH SEASON	PEAK SEASON
Studio	2/2	3,000	4,500	5,500	6,000
2 BDR	6/4	3,500	5,500	6,500	7,000
<b>2014 WEEKS</b>		1-12, 46-50	13-14, 17-20, 22-23, 39-41, 44-45, 51-52	15-16, 21, 24-26, 37-38	27-36, 42-43
<b>2015 WEEKS</b>		1-12, 46-50	13, 16-20, 22-23, 39-41, 44-45, 51-52	14-15, 21, 24-26, 37-38	27-36, 42-43

Nightly midweek rates are 10% of week rate. Check-in day for weekly occupancy: Saturday.

Note: Book from 10 months prior to arrival.

### SERVICES AND AMENITIES

- Balcony/Terrace in select units
- Broadband internet
- Digital TV
- Fishing
- Full kitchen in select units
- Game room
- Grocery store
- Gym
- Heated indoor pool
- Internet kiosk
- Jetted spa
- Lake
- Laundry facilities
- Playground
- Restaurant
- Sauna
- Steam room
- Tennis courts
- Water sports

### NEARBY ATTRACTIONS

- Bike trails
- Boating/Sailing
- Canoeing/Rowing
- Cycling/Bike rentals
- Golf
- Horseback riding
- Lake District
- Museums
- Picnic area
- Supermarket







*A Club Affiliated Resort*

# Thurnham Hall

Thurnham  
Nr. Lancaster, Lancashire  
LA2 0DT  
United Kingdom  
011.44.1524.751.766



Thurnham Hall is a 12th century country house that stands proudly in a stunning estate of nearly 30 acres. Boasting an elegant Jacobean Great Hall, the resort combines the very best of old and new.

Thurnham Hall's leisure center has a large swimming pool and extensive state-of-the-art exercise equipment, while the restaurant serves both fine and casual dining.

### POINTS VALUES

ACCOMMODATION	MAX/PRIVATE OCCUPANCY	LOW SEASON	MID SEASON	HIGH SEASON	PEAK SEASON
Studio	2/2	2,500	3,500	5,500	6,000
1 BDR	4/2	3,500	5,000	7,000	7,500
1 BDR Family	4/2	4,000	5,500	7,500	8,000
2 BDR	6/4	4,500	7,000	8,500	9,000
<b>2014 WEEKS</b>		1-12, 46-50	13-14, 17-20, 22-23, 39-41, 44-45, 51-52	15-16, 21, 24-26, 37-38	27-36, 42-43
<b>2015 WEEKS</b>		1-12, 46-50	13, 16-20, 22-23, 39-41, 44-45, 51-52	14-15, 21, 24-26, 37-38	27-36, 42-43

Nightly midweek rates are 10% of week rate. Check-in day for weekly occupancy: Friday / Saturday / Sunday.

Note: Book from 10 months prior to arrival.

### SERVICES AND AMENITIES

- Broadband internet
- Dishwasher
- Fishing
- Full kitchen
- Gym
- Hair dryers
- Heated indoor pool
- Internet kiosk
- Ironing facilities
- Jetted spa
- Laundry facilities
- Playground
- Restaurant
- Sauna
- Table tennis
- Television

### NEARBY ATTRACTIONS

- Golf
- Hiking
- Horseback riding
- Shopping
- Supermarket





*A Club Affiliated Resort*

# Woodford Bridge Country Club

Milton Damerel  
Nr. Holsworthy, Devon  
EX22 7LL  
United Kingdom  
011.44.1409.261.481

As an old coaching inn from the 15th century, Woodford Bridge Country Club provided food and shelter for weary travelers, yet, while a warm welcome is still guaranteed, the standards and exclusivity of the Country Club have changed somewhat over the centuries.

The thatched inn, the focal point of Woodford Bridge, still provides sustenance for guests in search of a superb meal in the friendly surroundings of the bistro.

The suites and lodges, which surround the inn, are a home from home that help to ensure you have a remarkable vacation.

### POINTS VALUES

ACCOMMODATION	MAX/PRIVATE OCCUPANCY	LOW SEASON	MID SEASON	HIGH SEASON	PEAK SEASON
Club Suite	2/2	2,000	2,800	4,000	4,800
1 BDR	4/2	3,000	4,500	5,500	6,000
1 BDR Lodge	4/2	3,500	5,500	6,500	7,000
2 BDR Lodge	6/4	4,000	6,500	7,500	8,000
<b>2014 WEEKS</b>		1-12, 46-50	13-14, 17-20, 22-23, 39-41, 44-45, 51-52	15-16, 21, 24-26, 37-38	27-36, 42-43
<b>2015 WEEKS</b>		1-12, 46-50	13, 16-20, 22-23, 39-41, 44-45, 51-52	14-15, 21, 24-26, 37-38	27-36, 42-43

Nightly midweek rates are 10% of week rate. Check-in day for weekly occupancy: Sunday.

Note: Book from 10 months prior to arrival.

### SERVICES AND AMENITIES

- Balcony/Terrace in select units
- Bar/Lounge
- Beauty shop
- Broadband internet
- Dishwasher in select units
- Fireplace in select units
- Fishing
- Full kitchen in select units
- Gift shop
- Grocery shop
- Gym
- Heated indoor pool
- Internet kiosk
- Jetted spa
- Laundry facilities
- Restaurant
- Satellite TV
- Sauna
- Squash

### NEARBY ATTRACTIONS

- Cinema
- Cycling/Bike rentals
- Golf
- Shopping
- Supermarket
- Tennis courts







*A Club Affiliated Resort*

## Wychnor Park Country Club

Nr. Barton under Needwood  
Burton on Trent, Staffordshire

DE13 8BU

United Kingdom

011.44.1283.791.391

Dating from the period of Queen Anne, Wychnor Park Country Club's 55-acre estate and grade-2 listed Great Hall symbolize an age of gracious living.

This outstanding destination offers a range of tasteful, fully furnished accommodations that allow you to enjoy the spirit of that period along with state-of-the-art facilities.

The beautifully landscaped gardens provide for a host of sporting activities but, above all, Wychnor Park Country Club is an idyllic country retreat.

### POINTS VALUES

ACCOMMODATION	MAX./PRIVATE OCCUPANCY	LOW SEASON	MID SEASON	HIGH SEASON	PEAK SEASON
1 BDR	4/2	3,500	5,500	6,500	7,000
2 BDR	6/4	4,000	6,500	7,500	8,000
3 BDR	6/6	4,500	7,000	8,000	8,500
<b>2014 WEEKS</b>		1-12, 46-50	13-14, 17-20, 22-23, 39-41, 44-45, 51-52	15-16, 21, 24-26, 37-38	27-36, 42-43
<b>2015 WEEKS</b>		1-12, 46-50	13, 16-20, 22-23, 39-41, 44-45, 51-52	14-15, 21, 24-26, 37-38	27-36, 42-43

Nightly midweek rates are 10% of week rate. Check-in day for weekly occupancy: Saturday.

Note: Book from 10 months prior to arrival.

### SERVICES AND AMENITIES

- Bowling green
- Croquet lawn
- Dishwasher
- Freeview TV
- Full kitchen
- Golf
- Gym
- Hair dryers
- Heated indoor pool
- Internet kiosk
- Ironing facilities
- Jetted spa
- Playground
- Restaurants
- Sauna
- Sun bed
- Tennis courts
- Steam room
- Washing machine

### NEARBY ATTRACTIONS

- Horseback riding
- Nightlife
- Shopping
- Marina
- Cycling/Bike rentals
- Picnic area







*A Club Affiliated Resort*

# East Clare Golf Village

Coolreagh House, Bodyke

County Clare

Ireland

011.35.361.640.694



Tucked in a quiet corner of Ireland, East Clare Golf Village is only a short distance away from a spectacular variety of local attractions. With something to offer everyone, this unique getaway makes it easy to indulge in the history of Bunratty Castle, take in the awe-inspiring sights of the Cliffs of Moher or practice your swing at the East Clare Golf Club.

Spend your evening relaxing in the spacious, classic accommodation choices with finely appointed finishes. Outfitted with the latest technology and private patios, East Clare Golf Village offers the finest in style and character.

### POINTS VALUES

ACCOMMODATION	MAX/PRIVATE OCCUPANCY	LOW SEASON	MID SEASON	HIGH SEASON	PEAK SEASON
2 BDR	6/4	5,500	8,250	9,250	10,000
2 BDR Elite	6/4	6,000	8,750	9,750	10,500
3 BDR	8/6	6,500	9,250	10,250	11,000
<b>2014 WEEKS</b>		1-6, 46-50	9-14, 44-45	7-8, 15-27, 36-41, 51-52	28-35, 42-43
<b>2015 WEEKS</b>		1-6, 46-50	9-13, 16, 44-45	7-8, 14-15, 17-27, 36-41, 51-52	28-35, 42-43

Nightly midweek rates are 10% of week rate. Check-in day for weekly occupancy: Saturday.

Note: Book from 10 months prior to arrival.

### SERVICES AND AMENITIES

- Excursions
- Full kitchen
- Golf
- Internet kiosk
- Parking on-site

### NEARBY ATTRACTIONS

- Banking
- Beauty salon
- Boating/Sailing
- Cycling/Bike rental
- Dry cleaning
- Fishing
- Gift shop
- Grocery store
- Hayrides
- Hiking
- Horseback riding
- Kennel
- Laundry facilities
- Restaurants
- Shopping





*A Club Affiliated Resort*

## Vilar do Golf

Quinta do Lago

8135-903 Almancil

Algarve

Portugal

011.35.128.935.2000

Quinta do Lago, located on the southern coast of Portugal, is one of Europe's most luxurious destinations boasting more than 2,000 acres of verdant countryside where the sweet aroma of centuries old pine forests meet the Atlantic Ocean.

Vilar do Golf can be found at the very heart of this exclusive estate in the Algarve and provides guests with stylish accommodations set amid lush gardens, superb leisure and sports facilities, and championship golf courses.

Whether vacationing alone or with family, this resort will provide an exquisite retreat and offers a wide range of restaurants, nightclubs and miles of golden sand.

### POINTS VALUES

ACCOMMODATION	MAX/PRIVATE OCCUPANCY	LOW SEASON	MID SEASON	HIGH SEASON	PEAK SEASON
1BDR	4/2	3,500	4,500	5,500	6,500
2BDR	6/4	4,500	5,500	6,500	7,500
2BDR Family	6/4	5,000	6,000	7,000	8,000
<b>2014 WEEKS</b>		1-12, 46-50	13-14, 17-20, 22-23, 39-41, 44-45, 51-52	15-16, 21, 24-26, 37-38	27-36, 42-43
<b>2015 WEEKS</b>		1-12, 46-50	13, 16-20, 22-23, 39-41, 44-45, 51-52	14-15, 21, 24-26, 37-38	27-36, 42-43

Nightly midweek rates are 10% of week rate. Check-in day for weekly occupancy: Saturday / Thursday.

Note: Book from 10 months prior to arrival.

### SERVICES AND AMENITIES

- Air conditioning
- Bars
- Bike rentals
- Cable TV
- Children's pool
- Dishwasher
- Full kitchen
- Golf
- Grocery store
- Gym
- Indoor pool
- Internet kiosk
- Ironing facilities
- Jetted spa
- Laundry facilities
- Massage services
- Outdoor pool
- Restaurants
- Sauna

### NEARBY ATTRACTIONS

- Beach
- Casinos
- Fishing
- Horseback riding
- Marina
- Museums
- Nightlife
- Parks
- Shopping
- Water sports







*A Club Affiliated Resort*

# The Kenmore Club

Kenmore by Aberfeldy  
Perthshire  
PH15 2HH  
Scotland  
011.44.01887.830555

The Kenmore Club is the home away from home you've always longed for.

Situated in this most picturesque of Scottish villages—street lighting is somewhat frowned upon here as they prefer the light of the stars—Kenmore is dominated by the calming waters of Loch Tay.

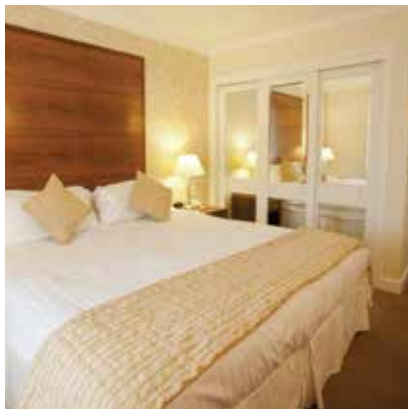
The Kenmore Club's charming cottage-style accommodations are in keeping with the local environment, making you feel completely at home. Of course, creature comforts abound and just across the way you will find Scotland's oldest inn, with a chimney breast inscribed by the hand of Robbie Burns himself.

### POINTS VALUES

ACCOMMODATION	MAX/PRIVATE OCCUPANCY	LOW SEASON	MID SEASON	HIGH SEASON	PEAK SEASON
1BDR	4/2	4,500	6,500	7,500	8,000
2BDR	6/4	5,000	7,500	8,500	9,000
2BDR Elite	6/4	5,500	8,000	9,000	9,500
3BDR	8/6	6,500	9,000	10,000	10,500
<b>2014 WEEKS</b>		1-12, 46-50	13-14, 37-41, 44-45	15-27, 36, 42-43, 51-52	28-35
<b>2015 WEEKS</b>		1-12, 46-50	13, 16, 37-41, 44-45	14-15, 17-27, 36, 42-43, 51-52	28-35

Nightly midweek rates are 10% of week rate. Check-in day for weekly occupancy: Saturday / Sunday.

Note: Book from 10 months prior to arrival.



### SERVICES AND AMENITIES

- Balcony/Terrace in select units
- Broadband internet
- Concierge
- Dishwasher
- DVD player
- Fishing
- Full kitchen
- Hair dryers
- Heated indoor pool
- Internet kiosk
- Ironing facilities
- Jetted spa
- Laundry facilities
- Massage services
- Mini-golf
- Playground
- Restaurant
- Satellite TV
- Sauna
- Stereo
- Tennis courts

### NEARBY ATTRACTIONS

- Boating/Sailing
- Canoeing/Rowing
- Cycling/Bike rentals
- Gift shop
- Golf
- Hiking
- Horseback riding
- Lake
- Mountain biking
- Mountain climbing
- Parks
- Supermarket
- Theatre
- Water sports





*A Club Affiliated Resort*

## Garden Lago

C/ Amsterdam N° 3  
Urb. Lago Menor  
07400 Puerto Alcudia  
Majorca, Balearic Islands  
Spain  
011.34.971.890.960



Puerto de Alcudia's stretch of pale sand extends as far as the eye can see and is just one of the many attractions that awaits guests that vacation at Garden Lago.

One of the most attractive vacation spots in Majorca, Puerto de Alcudia has something for everyone, from the waterpark and go-kart center for children, to quiet spots for couples eager to get away from it all.

A cosmopolitan atmosphere exists where you'll find clusters of shops, restaurants, bars and nightclubs surrounding the port, central crossroads and old town.

### POINTS VALUES

ACCOMMODATION	MAX/PRIVATE OCCUPANCY	LOW SEASON	MID SEASON	HIGH SEASON	PEAK SEASON
2 BDR	6/4	1,500	2,500	3,500	4,500
2 BDR Family	6/4	2,000	3,000	4,000	5,000
3 BDR	8/6	2,500	3,500	4,500	5,500
<b>2014 WEEKS</b>		1-12, 46-50	13-14, 17-20, 22-23, 39-41, 44-45, 51-52	15-16, 21, 24-26, 37-38	27-36, 42-43
<b>2015 WEEKS</b>		1-12, 46-50	13, 16-20, 22-23, 39-41, 44-45, 51-52	14-15, 21, 24-26, 37-38	27-36, 42-43

Nightly midweek rates are 10% of week rate. Check-in day for weekly occupancy: Saturday.

Note: Book from 10 months prior to arrival.

### SERVICES AND AMENITIES

- Air conditioning
- Balcony/Terrace
- Concierge
- Dishwasher in select units
- Full kitchen
- Gym
- Hair dryers
- Internet kiosk
- Ironing facilities
- Jetted spa
- Outdoor pool
- Parking
- Playground
- Restaurant
- Sauna
- Washing machine

### NEARBY ATTRACTIONS

- Beach
- Fishing
- Golf
- Horseback riding
- Kennel
- Lake
- Nightlife
- Shopping
- Squash
- Supermarket
- Tennis courts
- Water sports





*A Club Affiliated Resort*

## Club del Carmen

Urb. Los Pocillos  
Calle Noruega 2  
35510 Puerto del Carmen  
Lanzarote, Canary Islands  
Spain  
011.34.928.512.745

Located on Puerto del Carmen, Club del Carmen is perfectly situated amongst the beautiful picturesque beaches of Playa Grande and Playa Chica where you'll find a host of sporting activities from diving lessons and snorkeling to Jet Ski® rentals and parasailing 70 miles off the coast of Africa.

The most popular resort on Lanzarote, Club del Carmen provides a superb swimming pool, extensive sun terraces and a rooftop deck, as well as beautifully decorated accommodations in typical Canarian style, providing the perfect vacation spot within easy reach of the buzz of shops, bars, nightclubs and restaurants of the Paseo Maritimo.

### POINTS VALUES

ACCOMMODATION	MAX./PRIVATE OCCUPANCY	LOW SEASON	MID SEASON	HIGH SEASON	PEAK SEASON
1 BDR	4/2	-	3,500	4,500	5,500
2 BDR	6/4	-	4,000	5,000	6,000
2 BDR Villa	6/4	-	4,500	5,500	6,500
<b>2014 WEEKS</b>		-	13-14, 17-19, 44-50	1-12, 20-25, 36-41, 51-52	15-16, 26-35, 42-43
<b>2015 WEEKS</b>		-	13, 16-19, 44-50	1-12, 20-25, 36-41, 51-52	14-15, 26-35, 42-43

Nightly midweek rates are 10% of week rate. Check-in day for weekly occupancy: Sunday / Thursday.

Note: Book from 10 months prior to arrival.

### SERVICES AND AMENITIES

- Balcony/Terrace
- Broadband internet
- Ceiling fans
- Children's pool
- Dishwasher
- Full kitchen
- Hair dryers
- Internet kiosk
- Ironing facilities
- Jetted spa
- Laundry facilities
- Outdoor pool
- Pool table
- Poolside bar
- Restaurant
- Satellite TV
- Table tennis

### NEARBY ATTRACTIONS

- Beach
- Fishing
- Golf
- Gym
- Hair salon
- Shopping
- Supermarket
- Tennis courts
- Water sports
- Whale watching
- Zoo







*A Club Affiliated Resort*

## Jardines del Sol

Urb. Montaña Roja S/N  
Playa Blanca  
35570 Yaiza  
Lanzarote, Canary Islands  
Spain  
011.34.928.517.608

Situated on the southern tip of Lanzarote, near the quiet town of Playa Blanca, Jardines del Sol is built in the style of a Spanish pueblo blanco or white village.

The resort offers modern, well-equipped, detached bungalows surrounded by landscaped gardens and a beautiful pool. Enjoy the beaches of Playa Blanca or take a ferry to the island of Fuerteventura. The sea is calm and ideal for young children, and the glistening white sands are more than inviting.

### POINTS VALUES

ACCOMMODATION	MAX./PRIVATE OCCUPANCY	LOW SEASON	MID SEASON	HIGH SEASON	PEAK SEASON
2 BDR Villa	6/4	-	4,500	7,000	8,500
3 BDR Villa	8/6	-	6,500	10,000	12,500
4 BDR Villa	10/8	-	8,000	12,000	15,000
<b>2014 WEEKS</b>		-	13-14, 17-19, 44-50	1-12, 20-25, 36-41, 51-52	15-16, 26-35, 42-43
<b>2015 WEEKS</b>		-	13, 16-19, 44-50	1-12, 20-25, 36-41, 51-52	14-15, 26-35, 42-43

Nightly midweek rates are 10% of week rate. Check-in day for weekly occupancy: Sunday / Thursday.

Note: Book from 10 months prior to arrival.

### SERVICES AND AMENITIES

- Balcony/Terrace
- Book library
- Broadband internet
- Car rental
- Excursions
- Full kitchen
- Internet kiosk
- Ironing facilities
- Outdoor pool
- Pool bar
- Restaurant
- Snack bars
- Supermarket
- Tea/Coffee facilities
- Television
- Washing machine

### NEARBY ATTRACTIONS

- Bar
- Beach
- Nightlife
- Restaurants
- Shopping
- Water sports







*A Club Affiliated Resort*

## Royal Sunset Beach Club

Calle Londres Numero 6, Playa Fañabe  
38660 Costa Adeje  
Tenerife, Canary Islands  
Spain  
011.34.922.712.942



Located conveniently close to Playa de las Americas' abundant shops, restaurants and nightlife, Royal Sunset Beach Club has an impressive range of facilities and is deservedly regarded as one of the most impressive resorts in Tenerife.

The resort features immaculately kept subtropical gardens and a beautifully landscaped outdoor pool.

A sandy beach and a choice of exciting water sports are but a short walk away, and the beautifully furnished accommodations, each with a private balcony or terrace, are equipped with everything you could need for a wonderful vacation.

### POINTS VALUES

ACCOMMODATION	MAX/PRIVATE OCCUPANCY	LOW SEASON	MID SEASON	HIGH SEASON	PEAK SEASON
Studio	2/2	-	3,000	4,000	5,000
1 BDR	4/2	-	4,000	5,000	6,000
1 BDR Elite	4/2	-	4,500	5,500	6,500
2 BDR	6/4	-	5,000	6,000	7,000
<b>2014 WEEKS</b>		-	13-14, 17-19, 44-50	1-12, 20-25, 36-41, 51-52	15-16, 26-35, 42-43
<b>2015 WEEKS</b>		-	13, 16-19, 44-50	1-12, 20-25, 36-41, 51-52	14-15, 26-35, 42-43

Nightly midweek rates are 10% of week rate. Check-in day for weekly occupancy: Friday.

Note: Book from 10 months prior to arrival.

### SERVICES AND AMENITIES

- Balcony/Terrace
- Ceiling fans
- Children's pool
- Gym
- Hair dryers
- Internet kiosk
- Ironing facilities
- Laundry facilities
- Partial kitchen in select units
- Poolside bar
- Restaurants
- Satellite TV
- Sauna
- Squash
- Stereo
- Television

### NEARBY ATTRACTIONS

- Beach
- Fishing
- Golf
- Hair salon
- Nightlife
- Restaurants
- Shopping
- Supermarket
- Tennis courts
- Water sports





*A Club Affiliated Resort*

# Los Amigos Beach Club

Urb. Playamarina  
Carretera de Cadiz Km 204  
29647 Mijas Costa  
Málaga, Spain  
011.34.952.468.686

Los Amigos Beach Club is undoubtedly one of the best equipped resorts in the region and promises the perfect family vacation.

Almost an Andalusian village in itself, Los Amigos combines beautiful accommodations with a range of facilities including stylish indoor and outdoor pools, tennis courts, a clubhouse with restaurant and even its own bowling green.

With attractive landscaped gardens, you might consider never leaving the resort, however, there is much to see in the surrounding area; the colorful seaside market town of Fuengirola, affluent Puerto Banus and the cobbled streets of Mijas are just some of the delights within easy reach.

### POINTS VALUES

ACCOMMODATION	MAX/PRIVATE OCCUPANCY	LOW SEASON	MID SEASON	HIGH SEASON	PEAK SEASON
Studio Suite*	2/2	2,500	3,500	4,500	5,000
1 BDR	4/2	3,000	4,000	5,000	6,000
1 BDR Elite	4/2	4,000	5,000	6,000	7,000
2 BDR	6/4	3,500	4,500	5,500	6,500
2 BDR Elite	6/4	4,500	5,500	6,500	7,500
3 BDR	8/6	4,000	6,500	7,500	8,000
<b>2014 WEEKS</b>		1-12, 46-50	13-14, 17-20, 22-23, 39-41, 44-45, 51-52	15-16, 21, 24-26, 37-38	27-36, 42-43
<b>2015 WEEKS</b>		1-12, 46-50	13, 16-20, 22-23, 39-41, 44-45, 51-52	14-15, 21, 24-26, 37-38	27-36, 42-43

Nightly midweek rates are 10% of week rate. Check-in day for weekly occupancy: Saturday / Sunday. \*Studio Suites are only suitable for 2 Adults and 2 Children.

Note: Book from 10 months prior to arrival.

### SERVICES AND AMENITIES

- Air conditioning
- Balcony/Terrace
- Bowling green
- Broadband internet
- Children's pool
- Clubhouse
- Full kitchen
- Gift shop
- Internet kiosk
- Jetted spa
- Mini-golf
- Outdoor pool
- Playground
- Poolside bar
- Restaurants
- Supermarket
- Tennis courts
- Washing machine

### NEARBY ATTRACTIONS

- Beach
- Casinos
- Fitness center/centre
- Golf
- Horseback riding
- Nightlife
- Parasailing
- Shopping
- Water sports
- Zoo







*A Club Affiliated Resort*

## Sahara Sunset

Avenida Rocio Jurado S/N  
29630 Benalmádena Costa  
Málaga  
Spain  
011.34.952.440.258

Moorish inspired architecture is not the only distinctive feature of Sahara Sunset. This year round resort is built around a large and beautifully landscaped pool with a bridge spanning over to its own island.

Sahara Sunset has everything required for a superb family stay. Each of the beautifully furnished accommodations benefits from its own private balcony or terrace, while leisure facilities include outdoor and indoor pools and a relaxing jetted spa.

You will also find a warm welcome at the Casbah Café where you can enjoy a casual meal and sip exotic delights on the terrace.

### POINTS VALUES

ACCOMMODATION	MAX/PRIVATE OCCUPANCY	LOW SEASON	MID SEASON	HIGH SEASON	PEAK SEASON
Studio	2/2	2,500	3,500	4,500	5,000
1 BDR	4/2	3,000	4,000	5,000	6,000
2 BDR	6/4	3,500	4,500	5,500	6,500
<b>2014 WEEKS</b>		1-12, 46-50	13-14, 17-20, 22-23, 39-41, 44-45, 51-52	15-16, 21, 24-26, 37-38	27-36, 42-43
<b>2015 WEEKS</b>		1-12, 46-50	13, 16-20, 22-23, 39-41, 44-45, 51-52	14-15, 21, 24-26, 37-38	27-36, 42-43

Nightly midweek rates are 10% of week rate. Check-in day for weekly occupancy: Saturday.

Note: Book from 10 months prior to arrival.

### SERVICES AND AMENITIES

- Air conditioning
- Balcony/Terrace
- Children's pool
- Full kitchen
- Game room
- Grocery store
- Gym
- Indoor pool
- Internet kiosk
- Jetted spa
- Laundry facilities
- Mini-golf
- Outdoor pool
- Playground
- Poolside bar
- Restaurant
- Sauna
- Supermarket

### NEARBY ATTRACTIONS

- Beach
- Boating
- Casinos
- Fishing
- Golf
- Hair salon
- Horseback riding
- Kennel
- Nightlife
- Shopping
- Tennis courts
- Theme parks
- Water sports



# Membership advantages

## YOUR MEMBERSHIP

Upon paying your fees, you will receive your annual allotment of points.

Once allocated you may choose to:

- **BOOK** a vacation at the resorts listed here
- **SAVE** your points for use during the following year

Points have been allocated to your account based on the ownership type you had previously. If you owned more than one week with Premiere Vacation Collection, then all the points for each ownership type have been consolidated into one account.

Ownership Type	PVC Points Annual Allocation
Copper Annual.....	3,500
Silver Annual.....	6,000
Gold Annual.....	8,500
Platinum Annual.....	13,000
Copper EOY.....	1,750
Silver EOY.....	3,000
Gold EOY.....	4,250
Platinum EOY.....	6,500

\*EOY - Every Other Year usage

Adventures memberships remain limited to their current resorts until 10 months out, after which you will be able to book, subject to availability, into all the resorts shown in this Premiere Club Connection booklet.

In a few instances, the weekly points allocation for a Home Collection resort accommodation type is higher than the value of your allocation shown above. In this case, we will ensure that you are still able to use the accommodation type you purchased originally, and you will be able to book into that accommodation with your points allocation subject to availability. You can do this either online or through the call center.

## HOW TO MAKE A RESERVATION

*How to determine how many points are required*

The points values for all of the resorts are listed within this Directory. Points values for newly launched resorts are available online. To establish how many points are required, take the following steps:

1. **DETERMINE** the preferred dates of travel.
2. **CHECK** the proposed travel dates against the weeks calendar for the year of travel to determine the week number.
3. **SELECT** the preferred resort and use the grid to select the accommodation type and corresponding week number. This

Directory will indicate the number of points required for a week's stay when checking in on a standard check-in day. Specific check-in days are indicated below each resort listed in this directory.

## SHORT STAY POINTS VALUES

Reservations with a duration of less than seven nights are available at certain resorts. This also applies to additional nights booked following a standard weekly reservation (e.g., for a 10-night reservation, three additional nights will be charged as per this policy). The points calculation for a stay of less than seven nights is as follows:

- **SUNDAY** to **THURSDAY** inclusive; each night is **10%** of the weekly points value
- **FRIDAY** and **SATURDAY** nights; each night is **30%** of the weekly points value
- Points values for **SHORT STAY** bookings made within 30 days of arrival are discounted by **50%**

Reservations made for arrival on a non-standard check-in day are calculated at short stay points values as noted above.

## SEARCHING FOR AVAILABILITY AND BOOKING

Members can search for availability and book online at [DiamondResorts.com](http://DiamondResorts.com).

## EXCEPTIONAL VALUE ON RESERVATIONS LESS THAN 59 DAYS FROM ARRIVAL

For some resorts, if there is availability 59 days or less prior to arrival, then the standard check-in day weekly points values are discounted by 50%. For short stay points values a 50% discount will apply to all reservations made within 30 days of arrival. These reservations offer exceptional value for those with flexible travel plans and are offered on a first-come, first-served basis.

## MANAGING YOUR POINTS

If you would like to take a special trip and need more than your yearly allotment of points, our flexible points based system offers you the opportunity to save/borrow points from your current/following year's allocation.

## SAVING POINTS

If you do not intend to use all or part of your current year's allocated points within the current year, then there is an option to save points into the following year's allocation, as long as all your dues are fully paid. There are deadlines by which points must be saved each year, otherwise they expire at the end of the year in which they were allocated. The deadlines are:

- **SAVE** up to **100%** of the annual allocation of points by **JUNE 30**
- **SAVE** up to **50%** of annual allocation of points (if 50% has not already been saved) between **JULY 1** and **AUGUST 31**
- **SAVE** up to **25%** of the annual allocation of points (if 25% of the allocation has not already been saved) between **SEPTEMBER 1** and **OCTOBER 31**

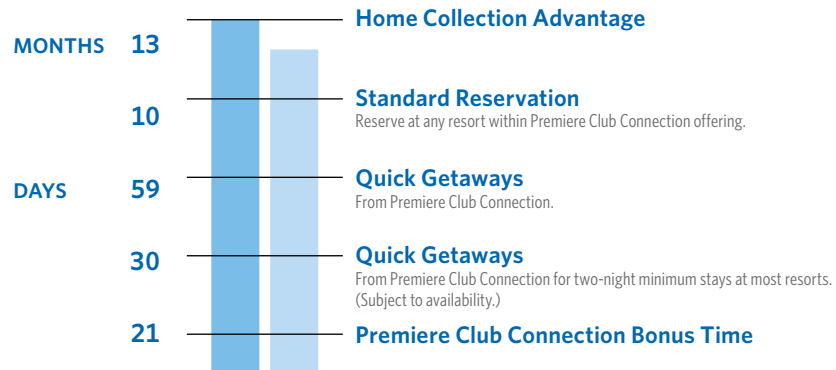


# Booking your vacation

## What reservation can I make?

Search resort availability and book reservations online at [DiamondResorts.com](http://DiamondResorts.com) or call member services.

NOTE: Reservation windows are based on the check-in date.



Please go to [DiamondResorts.com](http://DiamondResorts.com) and log in to your member account or call 1.877.DRI.CLUB to save points. Once points have been saved they may still be accessed during the current year, although an administrative fee may be charged. Please note that reservations made with points from the current year's allocation for arrival in the year after the points were allocated will require the arrival year's maintenance fees to have been paid in full prior to your arriving, otherwise the reservation will be cancelled.

### BORROWING POINTS

You may borrow points at any time during the year. Points will be credited to your current year's account, and your account for next year will be reduced by the points you borrowed. Prepayment of 75% of next year's management fees are required. Contact THE Club® to find out how you can borrow points from your next year's allocation.

### PURCHASING POINTS

Additional points may be purchased in order to permanently increase your yearly allocation.

### PREMIERE CLUB CONNECTION BONUS TIME

Premiere Club Connection Bonus Time allows you to book your stay 21 days or less in advance of your arrival date at preferred rental rates. Premiere Club Connection Bonus Time rates are only available at selected resorts within Premiere Club Connection. The minimum number of nights is two.

### SPECIAL RENTAL OFFERS AND POINTS DISCOUNTS

Premiere Club Connection membership gives you many opportunities to enjoy extra vacations at discounted rates without using your points. Special discounts at our resorts and other offers are frequently announced via e-mail. For further

details call 1.877.DRI.CLUB or update your contact information by entering your e-mail address in your Account area at [DiamondResorts.com](http://DiamondResorts.com).

### GUEST CERTIFICATES

Would you like to make a gift or offer some or all of your points allocation to someone outside of your immediate family? Simply make a confirmed reservation with Premiere Club Connection and request a name change. Provide the name of the guest that will be checking in and the reservation will be updated. A fee will be charged for this service.

### MAXIMIZE VACATION FLEXIBILITY

Note: Reservation windows for Premiere Club Connection resorts are based on the check-in date.

### CANCELLATION RULES\*

- **0%** loss of points if cancelled **395-91** days prior to arrival date
- **25%** loss of points if cancelled **90-61** days prior to arrival date
- **50%** loss of points if cancelled **60-14** days prior to arrival date
- **100%** loss of points if cancelled **13-0** days prior to arrival date

\*Rules vary on Bonus Time and Rental reservations.

### RESERVATION PROTECTION PLANS

Members are encouraged to purchase reservation protection at the time of booking. Purchasing the Reservation Protection Plan at the time of booking ensures 100% reimbursement of the points charged for the reservation should you need to cancel up to 24 hours prior to arrival date. Our annual CSA Travel Protection Plan offers post departure and interruption coverages along with points protection. You may be forced to cancel or postpone your vacation, such as for severe weather, the

illness of an immediate family member, jury duty and more. Don't take a chance with your next vacation!

Additional discounts may be available when booking online.

## Premiere Club Connection benefits program

If you must cancel a confirmed reservation, contact us as soon as possible, or cancel online by logging in to the member area on [DiamondResorts.com](http://DiamondResorts.com).

Replacing in part the Premiere Passport benefits package, we are pleased to introduce a range of offers and discounts which include:

- **DISCOUNTED RENTAL OFFERS** through our 'Club Select' program, where reduced rates for worldwide resorts are available for you to book online.
- **RESERVATION PROTECTION PLAN** which protects your points.
- An exclusive annual **TRAVEL PROTECTION PLAN**. Post departure benefits such as trip cancellation or interruption, baggage and travel delay, medical assistance, and concierge assistance are automatically included in each plan. To learn more and begin your coverage, please log in to the Member Area, click on Club Partners and TravelGuard.
- When you make a reservation online to a U.S. destination, a new **LEGAL PROTECTION PLAN** option will be displayed, which, if selected, gives you added peace of mind when traveling. This provides you with traffic incident representation so you don't have to return to your vacation location for ticket resolution and allows you to obtain a Power of Attorney in case of travel emergencies, among other features.
- You can also choose to add **MD247.COM** to your reservation providing unrestricted access to speak to a doctor by phone anytime of the day or night during the term of your travel reservation, in the state you are visiting. You can get medical advice, accurate diagnosis and even a non-narcotic prescription phoned into a nearby pharmacy!
- We have also partnered with Quorum FCU to provide you with a high-yield liquid savings account, which gives you higher interest and easy access to your money with no penalties.

Visit THE Club® Partners page in the Member Area to take advantage of your Premiere Club Connection discount offers:

- **FREE PHARMACY DISCOUNT CARD** which secures you from 10%-60% savings on most medications.
- **RESORTIME** offers you discounted rates at over 300 affiliated resorts worldwide.
- **LUGGAGE FORWARD** helps you get difficult and bulky luggage from door to door. Try it for your ski or golf equipment.

- **DELL** gives you discounts on Dell desktops and laptops.
- **1-800-FLOWERS** and **1-800-BASKETS** provide discounts on flowers, chocolates and gifts.
- **LEGALZOOM** provides you with discounted legal services.
- **SERTA** premium mattress sets designed for our guest rooms are available for purchase for your own home.
- **DISCOVER MY DIAMOND** enjoy our top quality bedding, linens and kitchenware at special value prices.
- **LINKS MAGAZINE** offers Golf enthusiasts a two year subscription for only \$10
- **USA TODAY** has a special offer for new subscribers.

## Accessibility requests

Diamond Resorts International® is committed to providing wonderful holidays for all our members and takes into consideration the needs of those who have a disability or an access requirement.

We have an ongoing program of commitment which consists of:

- Ensuring we aim to comply with disability discrimination legislation and exceed the requirements (where possible) regarding the refurbishment of our resorts
- Making appropriate enhancements to resorts and resort plans
- Improving internal awareness and training
- Providing accurate information on our website and in our literature, including information on access, available facilities and auxiliary aids
- Communicating with our members via regular disability forums and surveys to identify areas for improvement
- Producing compliant literature and communicating within the same guidelines

To ensure that we continue with our quest to provide seamless experiences, we encourage members to let us know of any requirements they might have relating to accessibility prior to arrival at a resort destination. We appreciate any information you can share in advance which will assist our resort teams in providing you with any requirements you may have during your stay. Your comfort and enjoyment remain our priority.

Members can select to have their membership account flagged with details that they would like us to be aware of. This can be recorded on your account through your accessibility profile or by telling your reservationist if booking by phone. To update your accessibility profile online, please visit [DiamondResorts.com](http://DiamondResorts.com), log in to your Member Area, and click on "Preferences" on the left menu, then the "Accessibility" tab. Select the preferences

that you wish us to be aware of or that may make your holiday experience more comfortable.

If you have any access requirements or needs you wish to discuss or want assistance in locating a resort that can provide comfortable accommodations for your needs, please contact us at your earliest convenience. Adapted units are available on a first-come, first-served basis and are subject to availability.

- For **NORTH AMERICAN RESORTS**, please call +1.888.250.6150
- For **EUROPEAN RESORTS**, please call +44 (0) 845.359.0009

- E-mail any resort accessibility requests to: [AccessRequirements@DiamondResorts.com](mailto:AccessRequirements@DiamondResorts.com)

Additional information for Diamond managed resorts including resort terrain and accessibility of common areas is available online. Visit [Diamondresorts.com](http://Diamondresorts.com); each Diamond managed resort has its own “Accessibility” page that offers helpful details resort grounds terrain, accessibility of common areas, and any aids available on request such as shower chairs or toilet risers. We have also listed information on area conveniences where possible to allow you to arrive at your destination worry free.

## Exchanging with Interval International®

To get started, select the destination of your choice; decide the size of resort accommodations you require, the date you wish to travel, and how many of your points you wish to use; then go to [IntervalWorld.com](http://IntervalWorld.com), search for availability, and confirm your exchange. Owners may also call 877.DRI.CLUB and select the prompt for Interval Exchange and a team member will then check availability and confirm your vacation (based on availability).

You will need to pay an exchange fee for each exchange you confirm or when you place a pending request through Interval

International. The fee will vary, depending on whether you are booking a domestic or international exchange. Book online and save money on the exchange fee.

You will receive written notification of your confirmed exchange. When placing a pending request, availability will be searched up until 48 hours before occupancy. When placing a pending request points will be removed from your ownership when a confirmation is made, not at the time the request is placed.

### THE CLUB® AT DIAMOND RESORTS INTERNATIONAL® POINTS (FULL-NOTICE EXCHANGE VALUES)

SEASON TDI RANGE	ECONOMY				MODERATE				PREMIUM			
	PEAK 140 - 150	HIGH 115 - 135	MID 90 - 110	LOW 50 - 85	PEAK 140 - 150	HIGH 115 - 135	MID 90 - 110	LOW 50 - 85	PEAK 140 - 150	HIGH 115 - 135	MID 90 - 110	LOW 50 - 85
Studio	2,750	2,250	1,750	1,500	3,750	3,250	2,750	2,000	5,000	4,000	3,250	2,500
1BDR	3,500	2,750	2,250	2,000	5,750	5,000	4,000	3,000	6,500	5,500	4,500	3,500
2BDR	5,000	3,750	3,250	3,000	6,750	6,000	4,750	3,500	9,000	7,500	6,000	4,000
3BDR	6,500	4,250	3,750	3,500	8,250	6,750	5,250	4,000	10,000	8,750	7,250	5,000
4BDR	7,500	5,500	4,250	4,000	9,500	8,000	6,500	5,000	12,000	10,000	8,000	6,000

Features, furnishings and amenities depicted are subject to change.



## 2014 WEEKS CALENDAR

WEEK	FRI	SAT	SUN	MON	TUES	WED	THU
1	Jan 03	Jan 04	Jan 05	Jan 06	Jan 07	Jan 08	Jan 09
2	Jan 10	Jan 11	Jan 12	Jan 13	Jan 14	Jan 15	Jan 16
3	Jan 17	Jan 18	Jan 19	Jan 20	Jan 21	Jan 22	Jan 23
4	Jan 24	Jan 25	Jan 26	Jan 27	Jan 28	Jan 29	Jan 30
5	Jan 31	Feb 01	Feb 02	Feb 03	Feb 04	Feb 05	Feb 06
6	Feb 07	Feb 08	Feb 09	Feb 10	Feb 11	Feb 12	Feb 13
7	Feb 14	Feb 15	Feb 16	Feb 17	Feb 18	Feb 19	Feb 20
8	Feb 21	Feb 22	Feb 23	Feb 24	Feb 25	Feb 26	Feb 27
9	Feb 28	Mar 01	Mar 02	Mar 03	Mar 04	Mar 05	Mar 06
10	Mar 07	Mar 08	Mar 09	Mar 10	Mar 11	Mar 12	Mar 13
11	Mar 14	Mar 15	Mar 16	Mar 17	Mar 18	Mar 19	Mar 20
12	Mar 21	Mar 22	Mar 23	Mar 24	Mar 25	Mar 26	Mar 27
13	Mar 28	Mar 29	Mar 30	Mar 31	Apr 01	Apr 02	Apr 03
14	Apr 04	Apr 05	Apr 06	Apr 07	Apr 08	Apr 09	Apr 10
15	Apr 11	Apr 12	Apr 13	Apr 14	Apr 15	Apr 16	Apr 17
16	Apr 18	Apr 19	Apr 20	Apr 21	Apr 22	Apr 23	Apr 24
17	Apr 25	Apr 26	Apr 27	Apr 28	Apr 29	Apr 30	May 01
18	May 02	May 03	May 04	May 05	May 06	May 07	May 08
19	May 09	May 10	May 11	May 12	May 13	May 14	May 15
20	May 16	May 17	May 18	May 19	May 20	May 21	May 22
21	May 23	May 24	May 25	May 26	May 27	May 28	May 29
22	May 30	May 31	Jun 01	Jun 02	Jun 03	Jun 04	Jun 05
23	Jun 06	Jun 07	Jun 08	Jun 09	Jun 10	Jun 11	Jun 12
24	Jun 13	Jun 14	Jun 15	Jun 16	Jun 17	Jun 18	Jun 19
25	Jun 20	Jun 21	Jun 22	Jun 23	Jun 24	Jun 25	Jun 26
26	Jun 27	Jun 28	Jun 29	Jun 30	Jul 01	Jul 02	Jul 03
27	Jul 04	Jul 05	Jul 06	Jul 07	Jul 08	Jul 09	Jul 10
28	Jul 11	Jul 12	Jul 13	Jul 14	Jul 15	Jul 16	Jul 17
29	Jul 18	Jul 19	Jul 20	Jul 21	Jul 22	Jul 23	Jul 24
30	Jul 25	Jul 26	Jul 27	Jul 28	Jul 29	Jul 30	Jul 31
31	Aug 01	Aug 02	Aug 03	Aug 04	Aug 05	Aug 06	Aug 07
32	Aug 08	Aug 09	Aug 10	Aug 11	Aug 12	Aug 13	Aug 14
33	Aug 15	Aug 16	Aug 17	Aug 18	Aug 19	Aug 20	Aug 21
34	Aug 22	Aug 23	Aug 24	Aug 25	Aug 26	Aug 27	Aug 28
35	Aug 29	Aug 30	Aug 31	Sep 01	Sep 02	Sep 03	Sep 04
36	Sep 05	Sep 06	Sep 07	Sep 08	Sep 09	Sep 10	Sep 11
37	Sep 12	Sep 13	Sep 14	Sep 15	Sep 16	Sep 17	Sep 18
38	Sep 19	Sep 20	Sep 21	Sep 22	Sep 23	Sep 24	Sep 25
39	Sep 26	Sep 27	Sep 28	Sep 29	Sep 30	Oct 01	Oct 02
40	Oct 03	Oct 04	Oct 05	Oct 06	Oct 07	Oct 08	Oct 09
41	Oct 10	Oct 11	Oct 12	Oct 13	Oct 14	Oct 15	Oct 16
42	Oct 17	Oct 18	Oct 19	Oct 20	Oct 21	Oct 22	Oct 23
43	Oct 24	Oct 25	Oct 26	Oct 27	Oct 28	Oct 29	Oct 30
44	Oct 31	Nov 01	Nov 02	Nov 03	Nov 04	Nov 05	Nov 06
45	Nov 07	Nov 08	Nov 09	Nov 10	Nov 11	Nov 12	Nov 13
46	Nov 14	Nov 15	Nov 16	Nov 17	Nov 18	Nov 19	Nov 20
47	Nov 21	Nov 22	Nov 23	Nov 24	Nov 25	Nov 26	Nov 27
48	Nov 28	Nov 29	Nov 30	Dec 01	Dec 02	Dec 03	Dec 04
49	Dec 05	Dec 06	Dec 07	Dec 08	Dec 09	Dec 10	Dec 11
50	Dec 12	Dec 13	Dec 14	Dec 15	Dec 16	Dec 17	Dec 18
51	Dec 19	Dec 20	Dec 21	Dec 22	Dec 23	Dec 24	Dec 25
52	Dec 26	Dec 27	Dec 28	Dec 29	Dec 30	Dec 31	Jan 01

2015 WEEKS CALENDAR

WEEK	FRI	SAT	SUN	MON	TUES	WED	THU
1	Jan 02	Jan 03	Jan 04	Jan 05	Jan 06	Jan 07	Jan 08
2	Jan 09	Jan 10	Jan 11	Jan 12	Jan 13	Jan 14	Jan 15
3	Jan 16	Jan 17	Jan 18	Jan 19	Jan 20	Jan 21	Jan 22
4	Jan 23	Jan 24	Jan 25	Jan 26	Jan 27	Jan 28	Jan 29
5	Jan 30	Jan 31	Feb 01	Feb 02	Feb 03	Feb 04	Feb 05
6	Feb 06	Feb 07	Feb 08	Feb 09	Feb 10	Feb 11	Feb 12
7	Feb 13	Feb 14	Feb 15	Feb 16	Feb 17	Feb 18	Feb 19
8	Feb 20	Feb 21	Feb 22	Feb 23	Feb 24	Feb 25	Feb 26
9	Feb 27	Feb 28	Mar 01	Mar 02	Mar 03	Mar 04	Mar 05
10	Mar 06	Mar 07	Mar 08	Mar 09	Mar 10	Mar 11	Mar 12
11	Mar 13	Mar 14	Mar 15	Mar 16	Mar 17	Mar 18	Mar 19
12	Mar 20	Mar 21	Mar 22	Mar 23	Mar 24	Mar 25	Mar 26
13	Mar 27	Mar 28	Mar 29	Mar 30	Mar 31	Apr 01	Apr 02
14	Apr 03	Apr 04	Apr 05	Apr 06	Apr 07	Apr 08	Apr 09
15	Apr 10	Apr 11	Apr 12	Apr 13	Apr 14	Apr 15	Apr 16
16	Apr 17	Apr 18	Apr 19	Apr 20	Apr 21	Apr 22	Apr 23
17	Apr 24	Apr 25	Apr 26	Apr 27	Apr 28	Apr 29	Apr 30
18	May 01	May 02	May 03	May 04	May 05	May 06	May 07
19	May 08	May 09	May 10	May 11	May 12	May 13	May 14
20	May 15	May 16	May 17	May 18	May 19	May 20	May 21
21	May 22	May 23	May 24	May 25	May 26	May 27	May 28
22	May 29	May 30	May 31	Jun 01	Jun 02	Jun 03	Jun 04
23	Jun 05	Jun 06	Jun 07	Jun 08	Jun 09	Jun 10	Jun 11
24	Jun 12	Jun 13	Jun 14	Jun 15	Jun 16	Jun 17	Jun 18
25	Jun 19	Jun 20	Jun 21	Jun 22	Jun 23	Jun 24	Jun 25
26	Jun 26	Jun 27	Jun 28	Jun 29	Jun 30	Jul 01	Jul 02
27	Jul 03	Jul 04	Jul 05	Jul 06	Jul 07	Jul 08	Jul 09
28	Jul 10	Jul 11	Jul 12	Jul 13	Jul 14	Jul 15	Jul 16
29	Jul 17	Jul 18	Jul 19	Jul 20	Jul 21	Jul 22	Jul 23
30	Jul 24	Jul 25	Jul 26	Jul 27	Jul 28	Jul 29	Jul 30
31	Jul 31	Aug 01	Aug 02	Aug 03	Aug 04	Aug 05	Aug 06
32	Aug 07	Aug 08	Aug 09	Aug 10	Aug 11	Aug 12	Aug 13
33	Aug 14	Aug 15	Aug 16	Aug 17	Aug 18	Aug 19	Aug 20
34	Aug 21	Aug 22	Aug 23	Aug 24	Aug 25	Aug 26	Aug 27
35	Aug 28	Aug 29	Aug 30	Aug 31	Sep 01	Sep 02	Sep 03
36	Sep 04	Sep 05	Sep 06	Sep 07	Sep 08	Sep 09	Sep 10
37	Sep 11	Sep 12	Sep 13	Sep 14	Sep 15	Sep 16	Sep 17
38	Sep 18	Sep 19	Sep 20	Sep 21	Sep 22	Sep 23	Sep 24
39	Sep 25	Sep 26	Sep 27	Sep 28	Sep 29	Sep 30	Oct 01
40	Oct 02	Oct 03	Oct 04	Oct 05	Oct 06	Oct 07	Oct 08
41	Oct 09	Oct 10	Oct 11	Oct 12	Oct 13	Oct 14	Oct 15
42	Oct 16	Oct 17	Oct 18	Oct 19	Oct 20	Oct 21	Oct 22
43	Oct 23	Oct 24	Oct 25	Oct 26	Oct 27	Oct 28	Oct 29
44	Oct 30	Oct 31	Nov 01	Nov 02	Nov 03	Nov 04	Nov 05
45	Nov 06	Nov 07	Nov 08	Nov 09	Nov 10	Nov 11	Nov 12
46	Nov 13	Nov 14	Nov 15	Nov 16	Nov 17	Nov 18	Nov 19
47	Nov 20	Nov 21	Nov 22	Nov 23	Nov 24	Nov 25	Nov 26
48	Nov 27	Nov 28	Nov 29	Nov 30	Dec 01	Dec 02	Dec 03
49	Dec 04	Dec 05	Dec 06	Dec 07	Dec 08	Dec 09	Dec 10
50	Dec 11	Dec 12	Dec 13	Dec 14	Dec 15	Dec 16	Dec 17
51	Dec 18	Dec 19	Dec 20	Dec 21	Dec 22	Dec 23	Dec 24
52	Dec 25	Dec 26	Dec 27	Dec 28	Dec 29	Dec 30	Dec 31

